



# Measuring Supports and Auxiliary Equipment



*TESA measuring supports have been designed to offer the best holding stability for instruments such as dial gauges, lever dial test indicators and probes. Stability is the prime requirement needed to reduce the related uncertainties in a measurement method or set-up.*





**A** Base with vee recess and 1 magnetic flat face. Disengageable of magnet possible. Duralumin articulations.

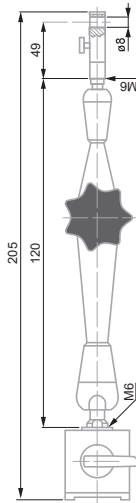
Dovetail clamp with a Ø 8 mm clamping bore

0,4 kg

Supplied without indicator

Transport packing

Declaration of conformity



## UNIVERSAL SUPPORTS

Magnetic measuring support with suction base or articulated arm.

### INTERRAPID Magnetic Support with Articulated Arm (small)



Magnetic support with articulated arm

No	=							Consisting of:
01639025	Small magnetic measuring stand with articulated arm	≈ 170	205	120	30 x 30 x 30	Consisting of:		<ul style="list-style-type: none"> <li>- 1 articulated arm length 120 mm</li> <li>- 1 dovetail clamp with fine adjustment</li> <li>- 1 magnetic base 30 x 30 x 30 (L x W x H)</li> </ul>

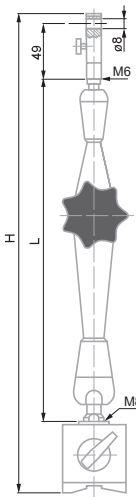


**A** Magnetic base has 1 prismatic and 2 flat faces. Articulations made from duralumin. Disengageable permanent magnet. Dovetail clamp with a Ø 8 mm clamping bore.

Supplied without measuring instrument

Suitable transport packing

Declaration of conformity



### INTERRAPID Magnetic Support with Articulated Arm

Simple and secure locking using a single rotating knob

- highly rigid arm and articulation.



Magnetic support with articulated arm

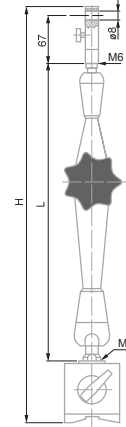
No	=								Consisting of:
01639022	INTERRAPID magnetic support with articulated arm	≈ 800	30 ÷ 150	●	310	200	60 x 50 x 55	1,45	<ul style="list-style-type: none"> <li>- Articulated arm</li> <li>- Clamp</li> <li>- Magnetic base</li> </ul>
01639023	INTERRAPID magnetic support with articulated arm	≈ 800	30 ÷ 150	●	390	280	60 x 50 x 55	1,85	<ul style="list-style-type: none"> <li>- Articulated arm</li> <li>- Clamp</li> <li>- Magnetic base</li> </ul>



## INTERAPID Magnetic Support with High Precision Articulated Arm

Magnetic support with high precision articulated arm and fine adjustment for measurements that need repeatability in the range of  $\mu\text{m}$ .

Simple and secure locking with a two-position knob. Highly rigid arm and articulation.



Magnetic support with high precision articulated arm



Magnetic base has 1 prismatic and 2 flat faces. Articulations made from duralumin. Disengageable permanent magnet. Dovetail clamp with a  $\varnothing 8$  mm clamping bore.



Supplied without measuring instrument



Suitable transport case

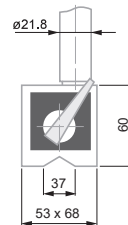


Declaration of conformity

No	=							
		N	V-Base for $\varnothing$ , mm	Fine adjust	H mm	L mm	Base mm	Consisting of:
01639053	INTERAPID High Precision Magnetic Support with Articulated Arm	$\approx 1000$	$30 \div 150$	●	440	320	73 x 50 x 55	<ul style="list-style-type: none"> <li>- Articulated Arm</li> <li>- Clamp</li> <li>- Magnetic base</li> </ul>

## INTERAPID Magnetic Support with Flexible Arm

For measurements in hard to reach locations. Instant and reliable locking through lever control.



01639020 Magnetic Support with Flexible Arm



Holding force on a flat surface  $\approx 1000$  N



The magnetic base has 1 prismatic and 2 flat faces. Disengageable permanent magnet. Full length 350 mm. Dovetail clamp with an  $\varnothing 8$  mm clamping bore.



Supplied without measuring instrument



Suitable transport packing



Declaration of conformity



**A** Switchable magnet. Clamp with Ø 8 mm clamping bore

Supplied without measuring instrument

Suitable transport packing

Declaration of conformity

## INTERAPID Inclinable Magnetic Support

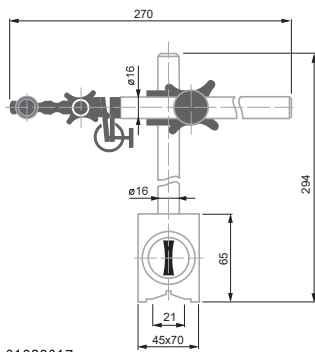
Standard model and models with strong holding force



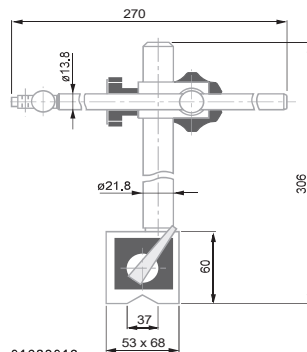
01639017



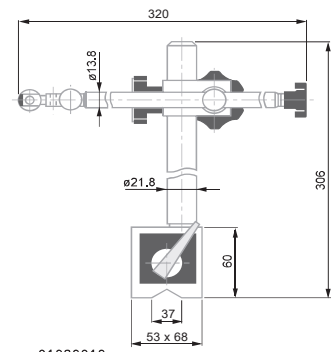
01639019



01639017



01639018



01639019



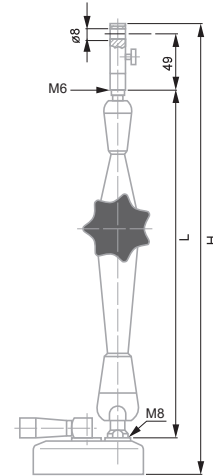
No	=	N	V-Base for Ø, mm	Standard Version	Fine adjust
01639017	INTERAPID magnetic support with V-base, 600 N	≈ 600	70 ÷ 220	Standard Version	●
01639018	INTERAPID magnetic support with V-base, 1000 N	≈ 1000	70 ÷ 220	Strong magnetic holding force	—
01639019	INTERAPID magnetic support with V-base, 1000 N	≈ 1000	70 ÷ 220	Strong magnetic holding force	●



## INTERAPID Support with Suction Base and Articulated Arm

Holds firmly on any smooth and flat surface

- Clamps instantly and reliably using a suction lever switch.
- Highly rigid articulated arm.
- Free from magnetic fields.



Round suction base made of aluminium (Ø 88 mm, height 28 mm) with flat suction base. Articulations made from duralumin. Suction controlled by lever switch. Dovetail clamp with an Ø 8 mm clamping bore.



1.1 kg



Supplied without measuring instrument



Suitable transport packing



Declaration of conformity



N



Fine adjustment



H, mm



L, mm



Consisting of:

01639024

INTERAPID Measuring support with suction base and articulated arm

≈ 400



363

280

- Articulated arm
- Fine adjust clamp
- Round suction base





Measuring table and column in hardened steel.



Measuring arm with  $\varnothing 8$  mm clamping bore, without fine adjustment. Measuring span: 48 mm.



2,7 kg



Supplied without measuring instrument



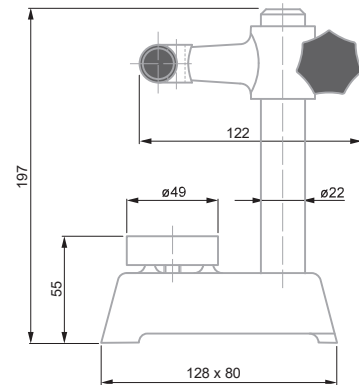
Suitable transport packing



Declaration of conformity

## INTERAPID Small Measuring Support and Table $\varnothing 49$ mm

Round steel measuring table



Application example with DIGICO indicator



01639006 INTERAPID small support with  $\varnothing 49$  mm measuring table

mm  
0 ÷ 100

mm  
49

## INTERAPID Measuring Support with Inclined Frontal Arm



Cast iron base



Base with front support face. Clamp for  $\varnothing 8$  mm mounting rod or dial gauge with lug back. Model No 01639003 also with dovetail clamp.



1,3 kg (01639003)  
4,35 kg (01639004)



Supplied without dial gauge



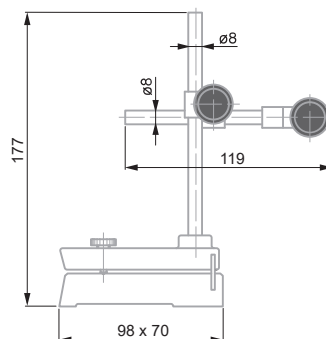
Packed suitable for transport



Declaration of conformity



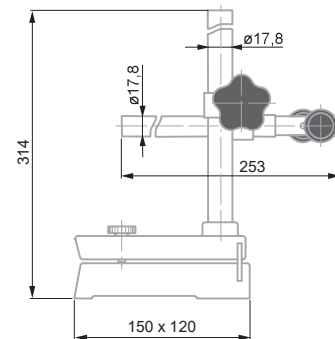
01639003



01939003



01639004



01939004



01639003 INTERAPID Measuring Support with Inclined Frontal Arm H = 177 mm

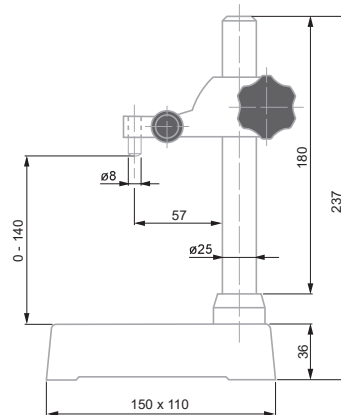
01639004 INTERAPID Measuring Support with Inclined Frontal Arm H = 314 mm

Used in conjunction with:  
Lever dial test indicators, small dial gauges  
Lever dial test indicators, small dial gauges, precision indicators, probes etc.



## INTERAPID UA 1 Table Measuring Support with Ground Table Surface

Basic model without fine adjustment



01639008	INTERAPID UA 1 measuring support with table	0 ÷ 140	100 x 100



Measuring table: cast iron. Column: chrome-plated steel, Arm: spheroidal graphite cast iron.



Measuring surface of table: ground. Column: Can be dismantled. Measuring arm with Ø 8 mm clamp.



3 kg



Supplied without measuring instrument



Suitable transport packing

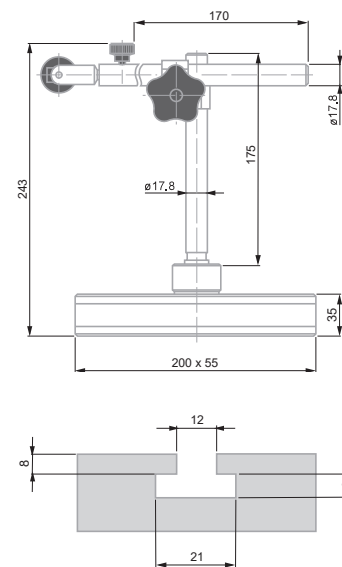


Declaration of conformity

## INTERAPID UD12 Support

Medium sized mobile measuring support for use with ever type dial test indicators, dial gauges, precision indicators, electronic probes etc.

With fine adjustment mechanism.



01639000	UD 12 universal support		
COMPOSÉ DE:			
01840105	Tige de fixation à queue d'aronde Ø 8 mm		
01640100	UDZ 3 Mounting rod and UDZ3 clamp Ø 8 mm clamp for UD 12		



Cast iron base



Stand with lateral guiding faces. T-slot for vertical column. 2 rigid articulations



3.3 kg



Supplied without measuring instrument



Suitable transport packing



Declaration of conformity



## INTERAPID Table Measuring Stands with Granite Grade 00



3 µm in accordance with DIN 876 T1, class 00

**A** 01639035: black burnished column with Ø 8 mm clamping bore.

01639029: chrome plated column with thread and threaded ring for adjusting the height of the measuring arm. Ø 8 mm clamping bore. Grooved measuring face.

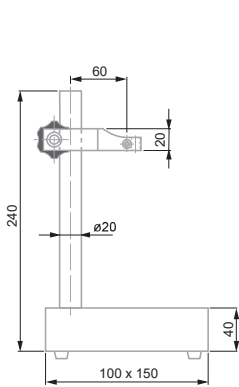
01639030: Chrome plated column. Tilting measuring arm and joint. Ø 4 mm or 8 mm bore for a dovetail clamp or lug.

01639033: Chrome plated column. Horizontal sliding arm. Ø 4 mm or 8 mm bore for a dovetail clamp or lug.

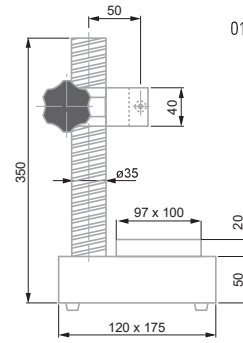
Supplied without measuring instrument

Suitable transport packing

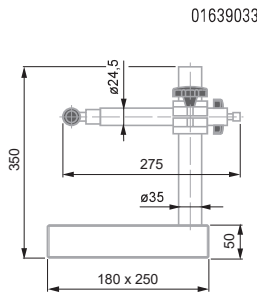
Declaration of conformity



01639035



01639029



01639033



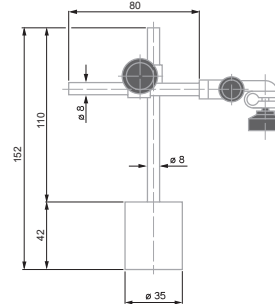
No	=									
		mm	mm	Measuring surface	Fine adjustment	Measuring table mm	Column height mm	Working surface mm	Span mm	kg
01639035	Table measuring support with granite, column Ø 20	0 ÷ 170	20	Granite	–	100 x 150 x 40	200	100 x 115	50,0	2,6
01639029	Slotted table measuring support with granite, threaded column Ø 35	0 ÷ 225	35	Hardened steel	●	120 x 175 x 50	300	100 x 100	68,5	8,1
01639033	Table measuring support with granite, column Ø 35	0 ÷ 260	35	Granite	●	180 x 250 x 50	300	180 x 200	Adjustable	10,5



## SMALL MAGNETIC SUPPORTS

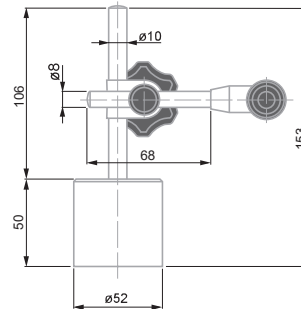
Ideal for lever type dial test indicators, and dial gauges up to 40 mm diameter  
- With 2 articulation joints and fine adjustment.

### UJ 15 Model



01639007 Magnetic support INTERAPID UJ15, dovetail clamp and  $\varnothing 8$  mm cylindrical clamping

### UJ 15G Model



01639016 UJ Magnetic support

### Accessories for Small Magnetic Stands



01640501 Steel base plate for UJ15 or UJ15G that become movable



Holding force on a flat surface:  $\approx 220$  N



Rounded base with permanent magnet



0,47 kg



Supplied without indicator



Packed suitable for shipping



Declaration of conformity



Holding force on a flat surface:  $\geq 350$  N



Rounded base with permanent magnet



0,93 kg



Supplied without indicator



Packed suitable for shipping



Declaration of conformity



50 x 80 x 20 mm



0,60 kg



Cast iron table, Chrome plated steel column



Suitable transport packing



Declaration of conformity



Support base: Ground measuring face. 2 T-slots. Removable column.



Supplied without sensor

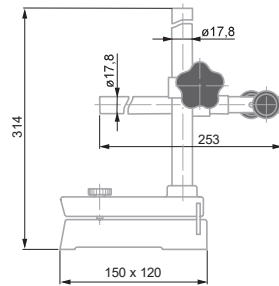


Support base only: 4,85 kg  
Measuring arm: 0,85 kg  
Sliding arm: 1,75 kg

## UA 30 MEASURING STAND

Base for mounting special fixtures adapted for series inspection

### INTERAPID UA 30 Measuring Stand, Without Measuring Arm



01639009

INTERAPID UA 30 measuring support with table, without measuring arm

0 ÷ 175

0 ÷ 6.89

125 x 115



Measuring arm 01610200: With fine adjustment. 1 mm travel. Ø 8 mm clamping bore.  
Sliding arm 01610201: Sliding holder for TESA YA dial gauges. Adjustable swinging movement. Clamping bore Ø 13 mm. Length of travel 35, 57 or 80 mm. Measuring span 60 mm. Depth stop plate 01640000: Dimensions: 115 x 35 x 3,5 mm. 120° vee recess for Ø ≤ 120 mm, 2 tightening screws.

### Accessories for UA 30



01610200



01610201



01640000



01610200

UK 20 measuring arm with fine adjustment for UA30 support

01610201

UK 25 sliding arm. Used with TESA YA for stationary bore measurement on UA30 support

01640000

UAZ 10 depth stop plate for UA 30

