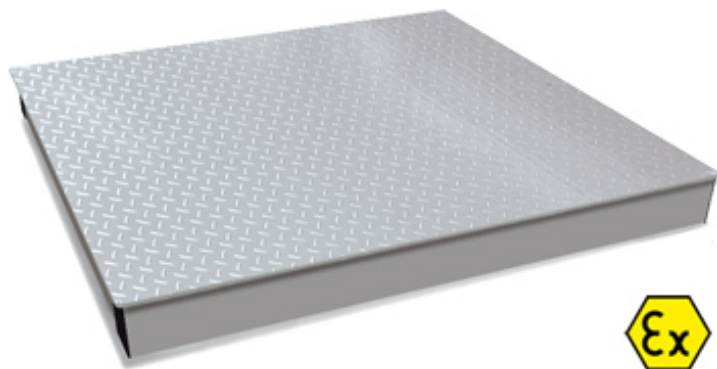


ESI

"ESI" SERIES 4-CELL STAINLESS STEEL 600x600mm PLATFORMS



Stainless steel monobloc electronic platforms, suitable for weighing in all types of industrial and commercial applications. Standard version is with approved load cell.

MAIN FEATURES

- Fitted with 4 off-center stainless steel approved load cells with IP67 protection from dust and water sprays.
- Very sturdy monobloc steel tubular structure with fixed stainless steel chequered loading surface.
- IP68 junction box.
- Adjustable, antislip feet and level.
- Up to 15 Vdc power supply.
- Shielded 5m long 6-pin cable with connectors for connection to the indicator.

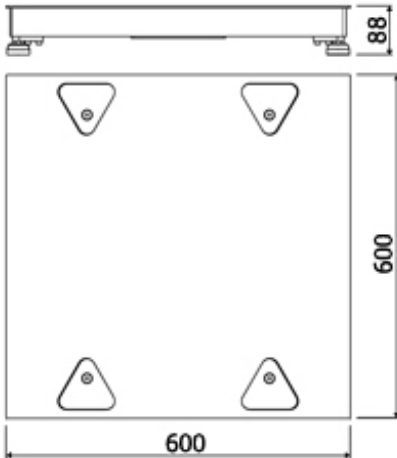
OPTIONS ONLY AVAILABLE AT TIME OF ORDER

- Connection to the indicator and calibration with CE-M 3000e single range or 3000e+3000e dual range approval.
- Models with special sizes and capacities (ask for estimate).
- ATEX version upon request

ACCESSORIES

- Indicator support stand.
- Pit frame for flush floor installation.

DETAIL 1



dimensions in mm

VERSIONS

Available versions

| Code | l x w x h (mm) | Max (kg) | d (g) | CE-M* 3000e (g) | CE-M* 2x3000e (g) | d* HR (g) |
|--------|-------------------|-------------|----------|--------------------|----------------------|--------------|
| ESI150 | 600x600x88 | 150 | 20 | 50 | 20-50 | 5 |
| ESI300 | 600x600x88 | 300 | 50 | 100 | 50-100 | 10 |

(*) These divisions are obtainable only with the relative options



www.diniargeo.com



“YOUR WORLDWIDE PARTNER FOR WEIGHING,”

DINI ARGEO
FRANCE sarl
Nogent-sur-Marne
info.fr@diniargeo.com

DINI ARGEO
GMBH
Sinsheim - Germany
info.de@diniargeo.com

DINI ARGEO
UK Ltd
Taunton - United Kingdom
info.uk@diniargeo.com

DINI ARGEO WEIGHING
INSTRUMENTS Ltd
Shanghai - China
info.cn@diniargeo.com

DINI ARGEO
WEIGHBRIDGES
Calto (RO) – Italy
info@diniargeo.com



HEAD OFFICE

Via Della Fisica, 20
41042 Spezzano di Fiorano Modena - Italy
Tel. +39.0536 843418 Fax. +39.0536 843521
info@diniargeo.com

SERVICE ASSISTANCE

Via Dell'Elettronica, 15
41042 Spezzano di Fiorano Modena - Italy
Tel. +39.0536 921784 Fax. +39.0536 926654
service@diniargeo.com



SALES AND TECHNICAL ASSISTANCE SERVICE