

## Display devices/Platforms/Weighing bridges

### Putting together individual weighing systems which cannot be verified

KERN offers a range of KERN display devices and KERN weighing units, such as platform scales, floor scales, pallet scales and drive-through scales, which you can put together to make your ideal scale. You choose the components, KERN handles the rest.

#### Assembly

KERN delivers the complete scale which is ready to use. Prices for assembly can be found in the "Assembly" price table. On request we can also produce a calibration certificate in accordance with DAkkS/DKD at an additional price, see page 194

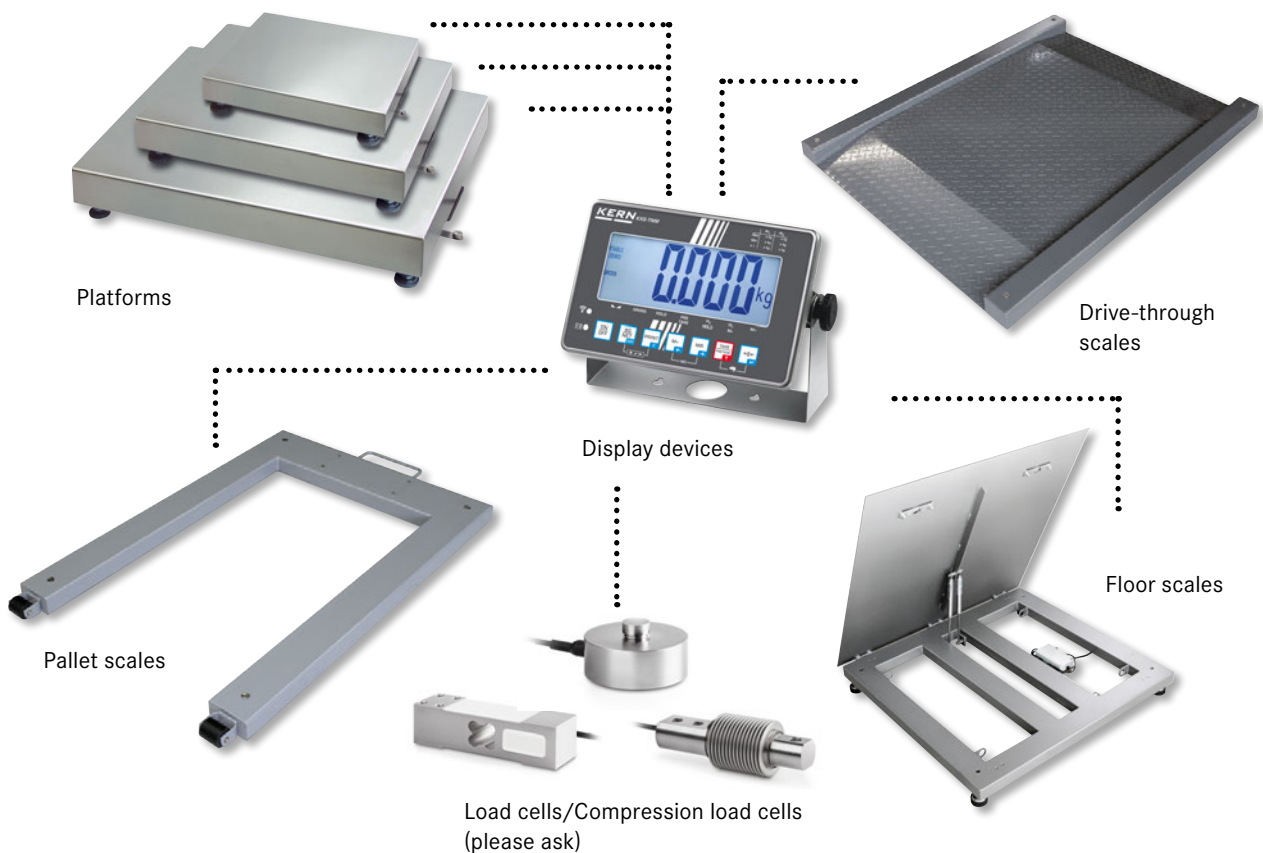
### Putting together individual weighing systems which can be verified or are verified

In order to provide the complete package, as well as assembling your individual weighing system, KERN will also carry out the manufacturer's initial verification/evaluation for conformity in accordance with EC directives as a commercial scales of verification class III.

In accordance with the European verification regulations, when assembling a display device with a weighing unit you must take the following notes into account:

- Only elements which can be verified with build-type approval or OIML test certificate can be combined into a weighing system which can be verified. With KERN these are labelled with "M".
- Platforms with load cells, provided as third-party products which have an OIML test certificate can be included.
- It will not be possible to carry out verification at a later date, e.g. after assembly and delivery of the weighing system. So please order the verification at the same time as you order the weighing system.

You will find a wide variety of display devices, platforms, weighing bridges, etc. in KERN's product range and these can be put together to create your ideal scale. You simply choose the components, KERN handles the rest.



**Florian Bächle**  
 Product specialist  
 Display devices/Platforms/Weighing bridges  
 Tel. +49 7433 9933-118  
 Fax +49 7433 9933-29118  
[florian.baechle@kern-sohn.com](mailto:florian.baechle@kern-sohn.com)

## The individual KERN steps:

<b>1. Proof of compatibility</b> This is mandatory by law and includes testing by using build-type approvals, whether the connection values of the display device match the connection data of the weighing unit.	<b>Weighing capacity</b>  0 up ... kg all Weighing capacities	<b>Model</b>  KERN <b>965-240</b>	<b>Price</b> excl. of VAT, ex works €  <b>45,-</b>
<b>2. Assembly</b> After testing for suitability using the proof of compatibility, the weighing system will be hard wired by KERN. The weighing system will then be tested in accordance with regulations of 2014/31/EU, the European directive for non-automatic weighing instruments and prepared for conformity assessment.	up 150 kg up 600 kg up ≤ 1500 kg up ≤ 2900 kg up ≤ 6000 kg	<b>965-411</b> <b>965-412</b> <b>965-413</b> <b>965-414</b> <b>965-415</b>	<b>70,-</b> <b>100,-</b> <b>120,-</b> <b>150,-</b> <b>250,-</b>
<b>3. Initial verification by the manufacturer</b> <b>Conformity assessment (“Initial verification by the manufacturer”)</b> KERN is authorised to carry out the conformity assessment (“initial verification by the manufacturer”) in accordance with 2014/31/EU, the European directive for non-automatic weighing instruments and is therefore authorised to introduce the weighing system onto the market, after the test has been carried out successfully and the conformity mark has been affixed.	up ≤ 5 kg up ≤ 50 kg up ≤ 350 kg up ≤ 1500 kg up ≤ 2900 kg up ≤ 6000 kg	<b>965-227</b> <b>965-228</b> <b>965-229</b> <b>965-230</b> <b>965-231</b> <b>965-232</b>	<b>55,-</b> <b>70,-</b> <b>93,-</b> <b>132,-</b> <b>150,-</b> <b>200,-</b>
<b>4. Declaration of conformity</b> KERN issues this after the initial verification by the manufacturer has been carried out successfully and sends it with the weighing system at no additional cost, and it can be used in areas regulated by law.			

## Modifications and special services

<b>Description</b>	<b>Model</b>  KERN	<b>Price</b> excl. of VAT, ex works €
<b>Cable extensions for platform scales with build-type approval</b>		
up to 4 m extension	<b>965-403</b>	<b>45,-</b>
up to 7 m extension	<b>965-404</b>	<b>60,-</b>
up to 10 m extension	<b>965-405</b>	<b>75,-</b>
<b>Cable extensions for platform scales without build-type approval</b>		
up to 4 m extension	<b>920-403</b>	<b>45,-</b>
up to 7 m extension	<b>920-404</b>	<b>60,-</b>
up to 10 m extension	<b>920-405</b>	<b>75,-</b>
<b>Setting an individual preload</b>		
Balance with build-type approval	<b>965-401</b>	<b>50,-</b>
Balance without build-type approval	<b>920-406</b>	<b>60,-</b>
Other adjustments in the balance or software changes	<b>965-407</b>	<b>95,-/h</b> Please ask
Plug connection (replaces the fixed cable connection between the display device and platform with a plug connection which can be disconnected)		
balances with type approval and verification	currently not possible	
balances with type approval, no verification	<b>965-406</b>	<b>60,-</b>

## Order example

**KFP 30V20M** platform and **KEN-TM** display device with cable extension (4 m) and setting an individual preload.

	<b>Model</b>  KERN	<b>Price</b> excl. of VAT, ex works €
KERN platform	<b>KFP 30V20M</b>	<b>230,-</b>
KERN display device	<b>KFN-TM</b>	<b>310,-</b>
Proof of compatibility	<b>965-240</b>	<b>45,-</b>
Cable extension	<b>965-403</b>	<b>45,-</b>
Setting the preload	<b>965-401</b>	<b>50,-</b>
Assembly	<b>965-411</b>	<b>70,-</b>
Verification at the factory KERN	<b>965-228</b>	<b>70,-</b>
<b>Complete scale (verified)</b>		<b>820,-</b>



**1 KERN KFB-TM**

Display device with large digits – easy to read

**2 KERN KFS-TM**

Professional indicator with 3 displays, also with EC type approval [M]

**Note**

to see what options are offered by this display device, please see the KERN platform scale IFB on page 105

**Note**

to see what options are offered by this display device, please see the KERN counting scale IFS on page 90

STANDARD

CAL EXT, RS 232, GLP, PCS, SUM, UNIT, TOL

STANDARD      OPTION      FACTORY

MOVE, MULTI, 1 DAY, ACCU, BT 2.0, ANALOG, M

STANDARD

CAL EXT, MEMORY, RS 232, GLP, INTERN, PCS, SUM, PERCENT

STANDARD      OPTION      FACTORY

UNIT, TOL, MULTI, 1 DAY, ACCU, M

\* not possible in combination with verification  
 \*\* not possible in combination with signal lamp

Features	Model KERN	
	1 KFB-TM	2 KERN KFS-TM
Display (segments)	5 + ½ digits	6 digits
EC type approval	yes	yes
Resolution verifiable	6000 e	3000 e
Resolution non verifiable	30000 d	60000 d
Weighing capacities	≤ 2	≤ 2
Weighing units	kg, lb	kg, g
Readability	1, 2, 5, 10, n	1, 2, 5, 10, n
Piece counting with reference	10, 20, 50, 100, 200	n
Display, digit height	Backlit LCD display, 52 mm	Backlit LCD displays, 13/16,5 mm
Additional functions	Totalising, HOLD function	99 item memories, totalising, printing of date and time
Strain gauge load cells	87 – 1600 Ω	87 – 1600 Ω
Linearisation	3 points	4 points
Input voltage	12 V, 500 mA	12 V, 500 mA
Permissible ambient temperature	-10 °C/40 °C	0 °C/40 °C
Interface RS-232	yes	yes
2. Interface RS-232, separate Y cable	CFS-A04, € 35,-	CFS-A04, € 35,-
Interface RS-485	-	-
Interface USB	-	-
Interface Bluetooth	KERN KFB-A03, see page 105, € 130,-	-
Analogue module	0-10V: KERN KFB-A04, € 95,-; 4-20 mA: KERN KFB-A05, € 95,-; see page 105	-
Signal lamp	CFS-A03, € 250,-	CFS-A03, € 250,-
Foot switch	-	-
Stand	BFS-A07, see page 105, € 120,-	BFS-A07, see page 90, € 120,-
Benchtop stand for display device/wall mount	yes/yes	yes/yes
Protective working cover	KFB-A02S05, see page 105, € 40,-	KFB-A02S05, see page 90, € 40,-
Rechargeable battery pack	KFB-A01, see page 105, € 35,-	KFS-A01, see page 90, € 35,-
Operating/charging time	up to 35 h/12 h	up to 40 h/12 h
Dimensions Housing W×D×H	250×160×65 mm	260×150×65 mm
Net weight	1,2 kg	1,5 kg
Price excl. of VAT, ex works €	<b>190,-</b> ↓	<b>210,-</b>

↓ Price reduction



### 3 KERN KIB-TM

Practical Flip/Flop display device for greatest ease of use

**Practical Flip/Flop display device:**

flexible positioning e.g. free-standing or screwed to the wall (optional). By rotating the upper housing shell you can determine the angle of the display as well as the cable outlet. Factory Option ex works for an additional cost, delivery time + 2 working days, KERN KIB-M01, € 95,-

**Industry 4.0:** A large number of (optional) data interfaces enable convenient Transferring weighing data to tablets, laptops, PCs, networks, smartphones, printers, etc.

**Searching and remote control of the balance**

using external control devices or computers with the KERN Communication Protocol (KCP). KCP is a standardised interface command structure for KERN balances and other instruments which allows you to recall and manage all relevant parameters and device functions. You can therefore simply connect KERN devices with KCP to computers, industrial control systems and other digital systems. In a large number of cases the KCP is compatible with the MT-SICS protocol. Only possible through RS-232 data interface, other interfaces on request

In the KERN product range you will find a large number of platforms, weighbridges etc. which you can combine with the KERN KIB-TM display device. Simply select the components, KERN will take care of the rest.

\* Verification not in combination with KERN KIB-A02, KIB-A03, KIB-A04, KIB-A10

\*\* Ethernet data interface, to connect an IP-based Ethernet network, must be ordered at purchase, not in combination with KERN KIB-A03, KIB-A04, KIB-A10

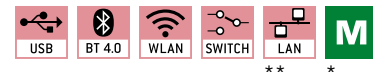
STANDARD



OPTION

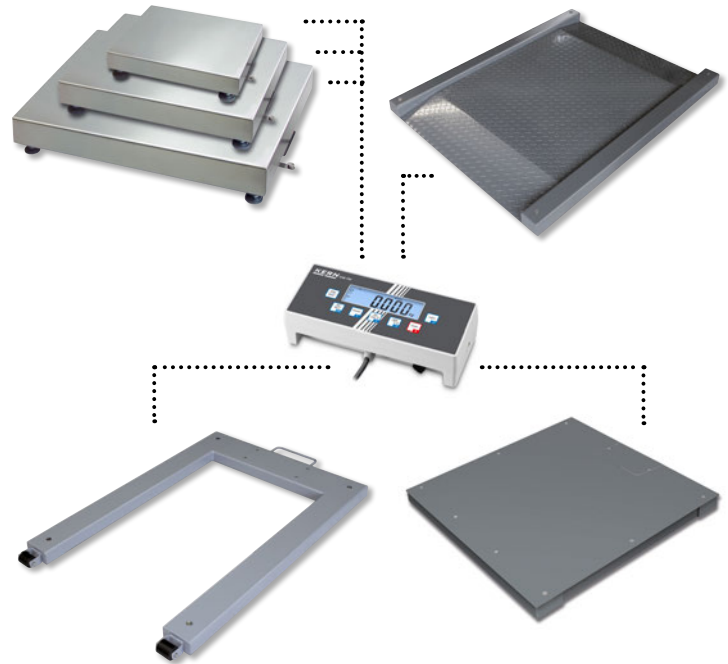


FACTORY



Features	Model KERN 3 KIB-TM
Display (segments)	7 digits
EC type approval	yes
Resolution verifiable	3000 e
Resolution non verifiable	30000 d
Weighing capacities	≤ 2
Weighing units	kg, g
Readability	1, 2, 5, 10, n
Piece counting with reference	5, 10, 20, 25, 50, 100
Display, digit height	Backlit LCD display, 24 mm
Additional functions	Totalising, HOLD function, printing of time. KCP Only possible through RS-232; USB, Bluetooth, WLAN, Digital I/O, LAN on request
Strain gauge load cells	87-1100 Ω
Linearisation	3 points
Input voltage	12 V DC, 1000 mA
Permissible ambient temperature	-10 °C/40 °C
Interface RS-232	yes
Interface RS-485	-
Interface USB	KIB-A03, see page 102/103, € 120,-
Interface Bluetooth	KIB-A04, see page 102/103, € 110,-
WLAN	KIB-A10, see page 102/103, € 55,-
SWITCH (DIGITAL I/O)	-
LAN	KIB-A02, see page 102/103, € 150,-**
Foot switch	-
Stand	EOC-A05, see page 102/103, € 60,-
Benchtop stand for display device/wall mount	EOC-A04, € 30,-
Protective working cover	EOC-A01S05, € 40,-
Rechargeable battery pack	KFB-A01, see page 102/103, € 35,-
Operating/charging time	up to 43 h/3 h
Dimensions Housing W×D×H	268×115×70 mm
Net weight	0,8 kg
Price excl. of VAT, ex works €	190,- <sup>↓</sup>

<sup>↓</sup> Price reduction



**Note**

to see what options are offered by this display device, please see the KERN platform scale EOC on page 102/103



**4 KERN KFE-TM**

Stainless steel display device with IP65 protection

**5 KERN KFN-TM**

Stainless steel display device with IP65 protection and superior display size

**6 KERN KXS-TM**

Stainless steel display device with IP68 protection and integrated power supply

**Note** to see what options are offered by this display device, please see the KERN SFE platform scale on page 107

**Note** to see what options are offered by this display device, please see the KERN SFB platform scale on page 78

**Note** to see what options are offered by this display device, please see the KERN SXS platform scale on page 79

STANDARD

CAL EXT, SUM, TOL, MOVE, IP 65, INOX, ACCU

STANDARD FACTORY

C MULTI, 1 DAY, M

STANDARD

CAL EXT, PCS, SUM, TOL, MOVE, IP 65, INOX

STANDARD OPTION FACTORY

C MULTI, 1 DAY, RS 232, ACCU, M

STANDARD

CAL EXT, PCS, SUM, UNIT, TOL, MOVE, IP 68

STANDARD

INOX, 230 V, 1 DAY

OPTION FACTORY

RS 232, RS 485, BT 2.0, ACCU, M

Features	Model KERN 4 KFE-TM*	Model KERN 5 KFN-TM	Model KERN 6 KXS-TM
Display (segments)	6 digits	5 + 1/2 digits	6 digits
EC type approval	yes	yes	yes
Resolution verifiable	6000 e	6000 e	10000 e
Resolution non verifiable	30000 d	30000 d	30000 d
Weighing capacities	≤ 2	≤ 2	≤ 2
Weighing units	kg	kg	kg, g
Readability	1, 2, 5, 10, n	1, 2, 5, 10, n	1, 2, 5, 10, 50
Piece counting with reference	-	10, 20, 50, 100, 200	10, 20, 50, 100, 200
Display, digit height	Backlit LCD display, 22 mm	Backlit LCD display, 52 mm	Backlit LCD display, 55 mm
Additional functions	-	Totalising, HOLD function	PRE-Tare function, totalising, HOLD function, peak hold, zero-point memorisation
Strain gauge load cells	87 – 1200 Ω	87 – 1600 Ω	87 – 1600 Ω
Linearisation	2 points	2 points	2–7 points
Input voltage	12 V, 500 mA	12 V, 500 mA	220–240 V AC
Permissible ambient temperature	-10 °C/40 °C	-10 °C/40 °C	-10 °C/40 °C
Interface RS-232	-	KFN-A01, see page 78, € 95,-	KXS-A04, € 100,-
Interface RS-485	-	-	KXS-A01, € 145,-
Interface USB	-	-	-
Interface Bluetooth	-	-	KXS-A02, € 170,- (balance ► PC)
Foot switch	-	-	KXS-A03, € 130,-
Stand	-	BFS-A07, see page 78, € 120,-	YKP-02, € 190,-
Benchtop stand for display device/wall mount	yes/yes	yes/yes	yes/yes
Protective working cover	-	-	-
Rechargeable battery pack	standard	GAB-A04, € 40,-	GAB-A04, € 40,-
Operating/charging time	up to 45 h/12 h	up to 35 h/12 h	bis zu 80 h/12 h
Dimensions Housing W×D×H	195×118×83 mm	266×165×96 mm	232×170×80 mm
Net weight	1 kg	2,6 kg	2,5 kg
Price excl. of VAT, ex works €	250,-	290,-	300,-

\* ONLY WHILE STOCKS LAST!



NEW

KERN KTA-T, € 400,- (auf Anfrage)



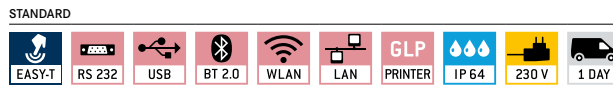
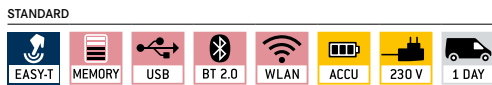
NEW

KERN KTB-T, € 1290,- (auf Anfrage)



**Convert your balance into a computer!**

This modern tablet transforms your weighing components into a powerful measuring system with a wide variety of analysis options in an instant. Simply download the appropriate app on the tablet and process the weighing data according to your ideas. Thanks to this modular concept, the initial investment is kept to a minimum and, at the same time, offers you a high level of investment security and future reliability. If your requirements should increase or your area of work should expand, then simply download more Apps. In this way the investment remains predictable and you do not pay for functions which you do not need – pretty smart!



**KERN KTA-T – Multifunctional tablet for connection to digital platforms, balances, measuring cells**

**Features**

- Ideal for use in the laboratory environment, industry, test laboratories, etc., either as permanently fixed large display for one balance or as mobile display for one or more scales using WLAN or Bluetooth
- 1 Compact, slim tablet
- Superior display size in comparison with a standard display on a balance
- Separate connection for power supply, so, when charging, the USB connection remains free for USB sticks, peripheral devices, etc.
- MicroUSB to connect peripheral devices, can also be used for power supply
- For further information and extensive accessories, please see [www.kern-sohn.com/de/KTA-T](http://www.kern-sohn.com/de/KTA-T)

**Accessories**

- 2 Aluminum tablet stand, infinitely adjustable in inclination for ergonomic reading and operation of the tablet, the tablet can be set upright and transversely, rubberized contact points ensure a non-slip grip and protect the tablet, W×D×H 100×35×85 mm, KERN YKD-A03, € 20,-

**KERN KTB-T – Robust professional tablet for demanding weighing applications**

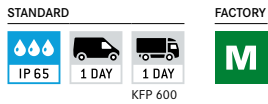
**Features**

- Ideal for use in the laboratory environment, pharmaceutical field, industry, test laboratories, etc., either as permanently fixed large display for one balance or as mobile display for one or more scales using WLAN or Bluetooth
- Wide range: can be connected to a variety of balances, from the analytical balance to the floor scale, thus particularly comfortable management of the weighing systems used
- High-quality industrial tablet
- Superior display size in comparison with a standard display on a balance
- 3 Separate connection for power supply, so, when charging, the USB connection remains free for USB sticks, peripheral devices, etc.
- A large number of standard integrated interfaces allow the parallel connection of peripheral devices, storage media, network connections, etc.
- 4 Octopus cable as standard, allows the parallel connection of up to 5 peripheral devices, networks, etc. with only one interface
- MicroUSB for connecting peripheral devices as well as integrated VESA mounting preparation for mounting the tablet to a wide variety of standard mounts, tripods etc. as standard
- For further information and extensive accessories, please see [www.kern-sohn.com/de/KTB-T](http://www.kern-sohn.com/de/KTB-T)



**1 KERN KFP-V20 IP65**

Platform



- **1 Stainless steel-weighing plate,**  
A Painted steel base
- **1 load cell, aluminium, silicone-coated, IP65, OIML-R60-approved,** class III, 3000 e
- **Level indicator and levelling feet** for precise levelling of the scale

**2 KERN KXP-V20 IP65**

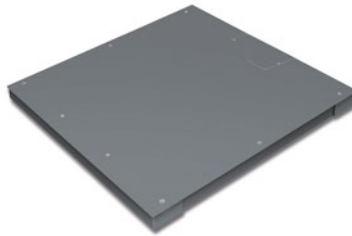
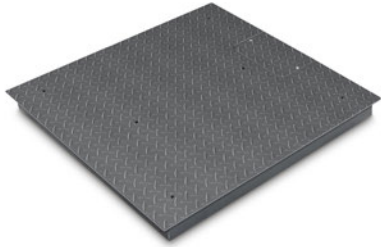
Platform



- **2 Stainless steel-weighing plate,** B Painted steel base, extremely rigid, wing design
- **1 load cell, aluminium, silicone-coated, IP65, OIML-R60-approved,** class III, 3000 e
- **Level indicator and levelling feet** for precise levelling of the scale



Model	Weighing range [Max] kg	Readability [d] g	Verification value [e] g	Min. load [Min] g	Cable length approx. m	Net weight approx. kg	Weighing plate W×D×H mm	Price excl. VAT, ex works €
<b>1 Plattform KFP-V20 IP65</b>								
KFP 3V20M	3	0,1	1	20	2,5	3,6	230×230×110	160,-
KFP 6V20M	6	2	1   2	40	2	3,6	230×230×110	170,-
KFP 6V20LM	6	0,2	1   2	40	2,5	6	300×240×110	190,-
KFP 15V20M	15	0,5	2   5	100	2	6	300×240×110	190,-
KFP 15V20LM	15	0,5	2   5	100	2,5	10	400×300×128	230,-
KFP 30V20SM	30	10	10	200	2,5	6	300×240×110	195,-
KFP 30V20M	30	1	5   10	200	2	10	400×300×128	230,-
KFP 60V20M	60	2	10   20	400	2	10	400×300×128	230,-
KFP 60V20LM	60	2	10   20	400	2	10	500×400×137	290,-
KFP 150V20M	150	5	20   50	1000	2	10	500×400×137	290,-
KFP 150V20LM	150	5	20   50	1000	2	22	650×500×135	510,-
KFP 300V20M	300	10	50   100	2000	2	22	650×500×135	510,-
KFP 600V20AM	600	200	200	4000	2,5	46	800×600×150	770,-
<b>2 Plattform KXP-V20 IP65</b>								
KXP 15V20M	15	0,5	2   5	100	3	3,2	300×240×90	230,-
KXP 6V20LM	6	0,2	1   2	40	3	3,2	300×240×90	220,-
KXP 15V20LM	15	5	5	100	3	8	400×300×90	320,-
KXP 30V20M	30	1	5   10	200	3	8	400×300×89	320,-
KXP 30V20LM	30	1	5   10	200	3	18	500×400×123	450,-
KXP 60V20M	60	2	10   20	400	3	11	400×300×89	330,-
KXP 60V20LM	60	2	10   20	400	3	22	500×400×123	460,-
KXP 150V20M	150	5	20   50	1000	3	18	500×400×123	450,-
KXP 150V20LM	150	5	20   50	1000	3	34	650×500×133,5	540,-
KXP 300V20M	300	10	50   100	2000	3	34	650×500×133,5	540,-



**1 KERN KIP-V20M**

Weighing bridge



- Weighing bridge with non-slip chequer plate, lacquered, welded
- **4 Load cells, steel, silicone-coated, IP67, OIML-R60-approval for verification, class III, 3000 e**
- Can be built in using pit frames (optional)
- **Level indicator and levelling feet** for precise levelling of the scale
- **Easy access to the junction box** from the top
- **Comfortable levelling of the weighing bridge** from the top
- Accessories page 118/119 (KERN BID)

**2 KERN KFP-V20 IP67**

Weighing bridge



- **A Weighing plate screwed on from the top (models with [Max] ≤ 1500 kg)**, so it easy to remove, hygienic and easy to clean.
- **Lacquered steel weighing bridge**, weighing plate size 1500×1500×130 mm corrugated steel plate. Extremely resistant to bending due to material thickness
- **4 Load cells, steel, silicone-coated, IP67, OIML-R60-approval for verification, class III, 3000 e**
- Can be built in using pit frames (optional)
- **Level indicator and levelling feet** for precise levelling of the scale
- **Easy access to the junction box** from the top
- **Comfortable levelling of the weighing bridge** from the top
- Accessories page 120/121 (KERN BFB)

**3 KERN KFD-V20**

Weighing bridge



- **Weighing bridge made of non-slip corrugated steel plate**, lacquered, two access ramps integrated, extremely resistant to bending
- Extremely flat construction to facilitate access: access height only 45 mm
- **4 Load cells, alloy steel, silicone-coated, IP67, OIML-R60-approval** class III, 3000 e
- Accessories page 132 (KERN NFB)



Model	Weighing range [Max] kg	Readability [d] g	Verification value [e] g	Min. load [Min] g	Cable length approx. m	Net weight approx. kg	Weighing plate W×D×H mm	Price excl. VAT, ex works €
<b>1 Weighing bridge KIP-V20M</b>								
KIP 600V20SM	600	200	200	4000	5	130	1000×1000×108	900,-
KIP 600V20M	600	200	200	4000	5	150	1500×1200×108	1150,-
KIP 1500V20SM	1500	500	500	10000	5	130	1000×1000×108	920,- ↓
KIP 1500V20EM	1500	500	500	10000	5	140	1250×1000×108	1020,- ↓
KIP 1500V20M	1500	500	500	10000	5	150	1500×1250×108	1180,- ↓
KIP 3000V20M	3000	1000	1000	20000	5	150	1500×1250×108	1190,- ↓
KIP 3000V20LM	3000	1000	1000	20000	5	180	1500×1500×108	1350,- ↓
<b>2 Weighing bridge KFP-V20 IP67</b>								
KFP 600V20SNM	600	200	200	4000	5	105	1000×1000×80	990,-
KFP 600V20NM	600	200	200	4000	5	135	1500×1250×80	1380,- ↓
KFP 1500V20SNM	1500	500	500	10000	5	105	1000×1000×80	1010,-
KFP 1500V20NM	1500	500	500	10000	5	135	1500×1250×80	1380,- ↓
KFP 3000V20NM	3000	1000	1000	20000	5	135	1500×1250×80	1380,- ↓
KFP 3000V20LM	3000	1000	1000	20000	5	155	1500×1500×80	1450,- ↓
KFP 6000V20M	6000	2000	2000	40000	5	210	1500×1500×130	1850,- ↓
<b>3 Weighing bridge KFD-V20</b>								
KFD 600V20M	600	200	200	4000	5	125	1600×1200×78	1310,- ↓
KFD 600V20LM	600	200	200	4000	5	155	1800×1400×80	1540,- ↓
KFD 1500V20M	1500	500	500	10000	5	125	1600×1200×78	1310,- ↓
KFD 1500V20LM	1500	500	500	10000	5	175	1800×1400×78	1540,- ↓

↓ Price reduction





**4 KERN KFA-V20**

Weighing beams

STANDARD  
 IP 67  
 2 DAYS

- **4 Weighing beams and painted steel base**
- **4 load cells, alloy steel, silicone-coated, IP67**
- **Levelling feet** for precise levelling of the weighing beams
- **D Image below: Version up to 6 t available.** Each weighing beam has a roller and handle for easy transport of the scale (KERN KFA-L)
- **NEW:** new model with short weighing beams, ideal for weighing compact items or animals in transport boxes  
 ▶ KERN KFA-600V20S
- Accessories page 127 (KERN UFA)

**5 KERN KFU-V20/V30**

U-Weighing bridge

STANDARD  
 IP 67  
 INOX  
 2 DAYS  
 FACTORY  
 M  
 KFU-V30

- **5 Load range:** painted steel (V20), stainless steel (V30) height 90 mm
- **4 load cells, alloy steel, silicone-coated, IP67, OIML-R60-approval for verification, class III, 3000 e**
- **2 rollers and handle** for easy transport of the scale
- Accessories KFU-V20 page 129 (KERN UFB)
- Accessories KFU-V30 page 131 (KERN UFN)

**6 KERN KFP-V30**

Platform

STANDARD  
 IP 67  
 INOX  
 2 DAYS  
 FACTORY  
 M

- **6 Stainless steel-weighing plate, E Stainless steel substructure**
- **1 load cell, Stainless steel, silicone-coated, IP67, OIML-approved, class III, 3000 e**
- **Level indicator and levelling feet** for precise levelling of the scale



**Note**  
 For additional models with 4 encapsulated stainless steel load cells (IP68) see the website, KERN UFN-BM



Model	Weighing range [Max] kg	Readability [d] g	Verification value [e] g	Min. load [Min] g	Cable length approx. m	Net weight approx. kg	Weighing plate W×D×H mm	Price excl. VAT, ex works €
<b>4 Weighing beams KFA-V20</b>								
KFA 600V20S	600	200	-	-	5	30	800×120×100	730,- ↓
KFA 1500V20	1500	500	-	-	5	36	1200×120×100	750,- ↓
KFA 3000V20	3000	1000	-	-	5	36	1200×120×100	750,- ↓
KFA 3000V20L	3000	1000	-	-	5	65	2000×120×100	1150,-
KFA 6000V20L	6000	2000	-	-	5	125	2100×160×85	1550,-
KFA 6000V20	6000	2000	-	-	5	85	1200×160×80	1220,-
<b>5 U-Weighing bridge KFU-V20</b>								
KFU 600V20M	600	200	200	4000	5	55	840×1300×90	830,-
KFU 1500V20M	1500	500	500	10000	5	55	840×1300×90	830,- ↓
<b>5 Stainless steel U-Weighing bridge KFU-V30</b>								
KFU 600V30M*	600	200	200	4000	2,5	55	840×1300×90	1390,- ↓
KFU 1500V30M*	1500	500	500	10000	2,5	55	840×1300×90	1590,- ↓
<b>6 Stainless steel platform KFP-V30</b>								
KFP 15V30M	15	0,5	5	100	2,5	5,0	300×240×100	480,-
KFP 30V30M	30	1	10	200	2,5	10	400×300×128	540,-
KFP 30V30SM	30	10	10	200	2,5	5,0	300×240×100	490,-
KFP 60V30LM	60	2	20	400	2,5	10	500×400×137	650,-
KFP 60V30M	60	2	20	400	2,5	10	400×300×128	550,-
KFP 60V30XLM	60	2	20	400	2,5	22	650×500×142	990,-
KFP 150V30SM	150	5	50	1000	2,5	10	400×300×128	540,-
KFP 150V30M	150	5	50	1000	2,5	10	500×400×137	660,-
KFP 150V30LM	150	5	50	1000	2,5	22	650×500×135	990,-
KFP 300V30M	300	10	100	2000	2,5	22	650×500×135	990,-

\* ONLY WHILE STOCKS LAST!

↓ Price reduction



**7 KERN KFP-V40**

Weighing bridge

STANDARD FACTORY

IP 68 INOX 2 DAYS M

- **7** Weighing bridge entirely made of stainless steel, extremely resistant to bending because of its high material thickness
- **F** Weighing plate fixed with stainless steel screws, for easier access to the loadcells from above
- **4 load cells, stainless steel, encapsulated, IP68, OIML-R60-approved**, class III, 3000 e
- Can be built in using pit frames (optional)
- **Level indicator and levelling feet** for precise levelling of the scale
- **Comfortable levelling of the weighing bridge** from the top
- Accessories page 124 (KERN BFN)

**8 KERN KFD-V40**

Weighing bridge

STANDARD FACTORY

IP 68 INOX 2 DAYS M

- **8** Weighing bridge made from stainless steel, two integrated access ramps, extremely resistant to bending
- Extremely flat construction to facilitate access: access height only 45 mm
- **4 load cells, stainless steel, encapsulated IP68, OIML-R60-approval for verification**, class III, 3000 e
- **Level indicator and levelling feet** for precise levelling of the scale
- Accessories page 133 (KERN NFN)

**9 KERN KKP-V40**

Weighing bridge

STANDARD FACTORY

IP 68 INOX 5 DAYS M

- **9** Weighing bridge made entirely of stainless steel, extremely resistant to bending because of its high material thickness
- **G** To clean or service the floor scale, the weighing plate can be flipped up easily using two retractable handles, without damaging your back
- **4 load cells, stainless steel, encapsulated IP68, OIML-R60-approval for verification**, class III, 3000 e
- Can be built in using pit frames (optional)
- **Level indicator and levelling feet** for precise levelling of the scale
- **Comfortable levelling of the weighing bridge** from the top
- Accessories page 125/126 (KERN BKN)

**Note** We will be happy to create custom products for you, such as, for example weighing plates with holes and hooks in place of handles, other weighing plate sizes, other materials (steel grades) and much more.



Model	Weighing range [Max] kg	Readability [d] g	Verification value [e] g	Min. load [Min] g	Cable length approx. m	Net weight approx. kg	Weighing plate W×D×H mm	Price excl. VAT, ex works €
<b>7 Stainless steel weighing bridge KFP-V40</b>								
KFP 600V40SM	600	200	200	4000	5	95	1000×1000×80	2610,-
KFP 1500V40M	1500	500	500	10000	5	135	1500×1250×80	3330,-
KFP 1500V40SM	1500	500	500	10000	5	95	1000×1000×80	2690,-
KFP 3000V40M	3000	1000	1000	20000	5	135	1500×1250×80	3350,-
<b>8 Stainless steel weighing bridge KFD-V40</b>								
KFD 600V40M	600	200	200	4000	5	130	1600×1200×78	2900,- ↓
KFD 1500V40M	1500	500	500	10000	5	130	1600×1200×78	2900,- ↓
<b>9 Stainless steel weighing bridge KKP-V40</b>								
KKP 600V40M	600	200	200	4000	5	125	1500×1250×110	3900,-
KKP 600V40SM	600	200	200	4000	5	95	1000×1000×110	3200,-
KKP 1500V40M	1500	500	500	10000	5	125	1500×1250×110	3900,-
KKP 1500V40SM	1500	500	500	10000	5	95	1000×1000×110	3200,-
KKP 3000V40LM	3000	1000	1000	20000	5	150	1500×1500×110	5400,-
KKP 3000V40M	3000	1000	1000	20000	5	125	1500×1250×110	3900,-

ONLY WHILE STOCKS LAST!

↓ Price reduction