

Digital calipers with outside angled measuring jaws

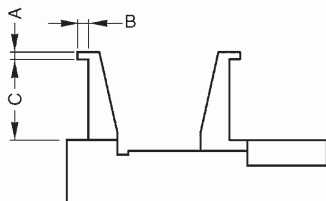
These calipers have short, stable, V-shaped measuring jaws with a flat front. Specially designed for measuring bore and internal groove diameters.

- Measuring range: 8 - 200 mm.
- Resolution: 0.01 mm.

- mm/inch conversion.
- On/off switch.
- Preset at 10 mm (delivery incl. setting ring).
- Preset through SET, + and - switches.
- Thickness measuring face: 0.5 mm.
- Power supply: 1 battery type V357.



907.556



Item No.	Measuring range/mm	Length/mm		
		A	B	C
907.556	8 - 150	1.5	3.5	27.5
907.557	8 - 200	1.5	3.5	27.5
Option:				
836.535	Spare battery			