

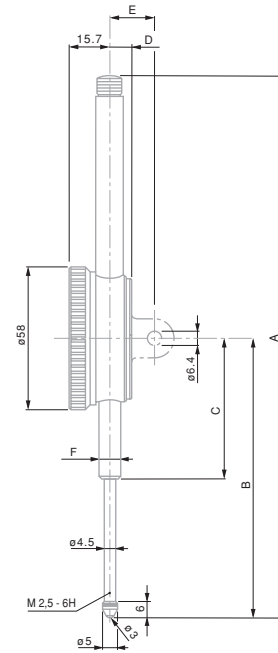
Dial Ø 58 mm – Reading 0,01 mm – Long travel

Long range precision dial gauges

- EN ISO 463
Factory standard
- Rotating dial. With or without dial lock.
- Full-metal dial casing. Mounting shank and plunger in hardened stainless steel
- Adjustable tolerance markers. Thread M2,5 for measuring insert
- Measuring insert with 3 mm ball tip already mounted
- Inspection report with declaration of conformity



712



| No | = | | | | | | | | | |
|-----|------------|-----|-------|------|----|--------------|---|---|---|----|
| | | mm | mm | mm | mm | mm | | | | |
| 712 | COMPAC 712 | 30 | 30,5 | 0,01 | 1 | 0 ÷ 50 ÷ 100 | ● | – | – | 58 |
| 722 | COMPAC 722 | 50 | 50,5 | 0,01 | 1 | 0 ÷ 50 ÷ 100 | ● | – | – | 58 |
| 732 | COMPAC 732 | 100 | 100,5 | 0,01 | 1 | 0 ÷ 50 ÷ 100 | ● | – | – | 58 |

Dimensions

| mm | 30 mm | 50 mm | 100 mm |
|----|-------|-------|--------|
| A | 148 | 228 | 390 |
| B | 88 | 117,2 | 211,6 |
| C | 50 | 60 | 103,6 |
| D | 10 | 9 | 9 |
| E | 20 | 19 | 19 |
| F | Ø 8h6 | Ø 8h6 | Ø 8h6 |

Permissible limits of a metrological characteristic (MPE/MPL)

| | 20 µm | 25 µm | 30 µm |
|--|---------|---------|---------|
| | 25 µm | 30 µm | 35 µm |
| | 3 µm | 3 µm | 3 µm |
| | 5 µm | 5 µm | 8 µm |
| | ≤ 2,2 N | ≤ 2,5 N | ≤ 3,2 N |

