

BIPOL

Remote visual inspection solutions



BIPOL PRO C ^{HD}

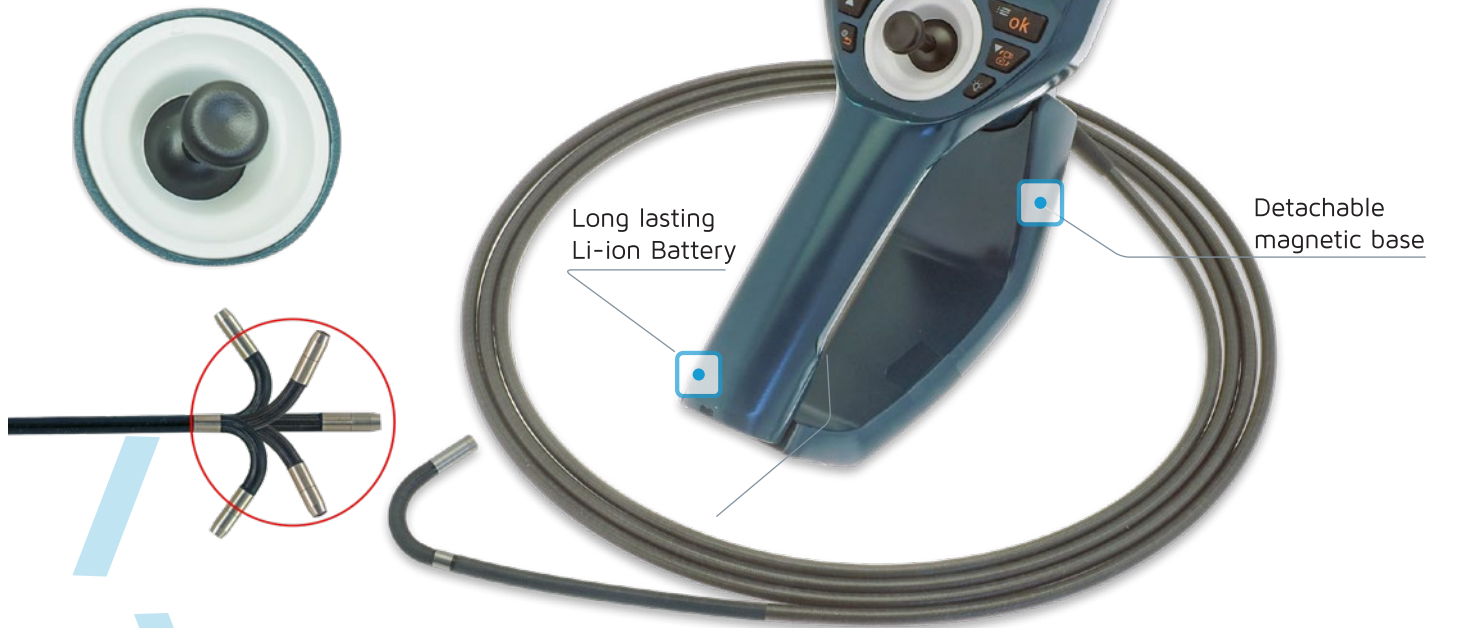
High definition
modular
video boroscope

www.bipol.fr

BIPOL PRO C HD

Articulating Videoscope

An articulated probe is commonly used to inspect areas we can't see with a direct line of sight or with obstacles to avoid.



BIPOL PRO C HD videoscope is a compact fully portable system made of a high-resolution camera mounted on an articulated probe with 4-way articulation or a non-articulated probe. Still images and videos can easily be recorded with a trigger located on the back of the videoscope. Probes can easily be exchanged in a matter of seconds, allowing you to use only one device for multiple inspections. A Wi-Fi module that connects to a dedicated Bipol application is set up on this device, which allows sharing photos and videos in a group. This videoscope offers great versatility and wear resistance, qualities that make it the ideal instrument for your visual inspections.



BIPOL PRO C HD

Non-articulating Videoscope

A non-articulated probe is commonly used for straight inspections with a direct line of sight.



CUSTOMIZABLE PRODUCT A SOLUTION TO ANY SITUATION

The **Pro CHD** is a modular videoscope that you can customize according to the inspection to be performed. Indeed, the interchangeable articable or non-articable probes have different types of lighting, available in several lengths and diameters, with 2 viewing directions available.

There are many possible variants of assembly, the unit is custom-made allowing you to adapt the product to your different needs so it can be used for several tasks.

Please do not hesitate to contact us if you have any questions, doubts or if you need help with product customization.

Multiple illumination choices

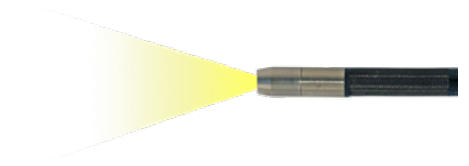
Different types of lighting are available depending on the inspections to be carried out and your needs.

White Illumination :



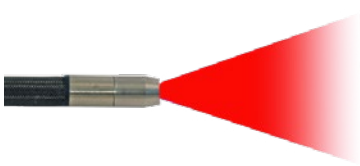
Light intensity can easily be adjusted on 7 different levels.

Illumination is provided by longlasting white LEDs.



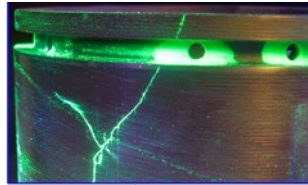
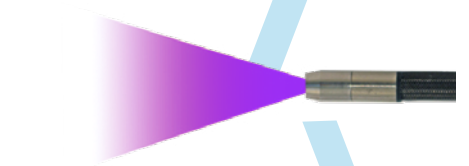
A fiber optic lighting version (which offers a more homogeneous surface lighting) is available on demand.

InfraRed Illumination : can light a dark area without being detected by the human eye (940nm wavelength). This allows sectors such as Law Enforcement & Security Forces to remain discreet during dangerous inspections.



Pro C IR

UltraViolet Illumination : Fluorescent Penetrant Inspection (FPI) is a process that highlights an illuminated area where a high sensitivity dye is applied to detect defects such as micro-fractures, seams and other flaws that may compromise the integrity or quality of a part in all non-porous materials. (365 nm wavelength).



Pro C UV

See the Invisible

CUSTOMIZABLE PRODUCT A SOLUTION TO ANY SITUATION

Lengths, diameters and direction of vision



Available diameters are 2.0 - 2.8 - 3.9 - 4.8 & 6.0 mm.
Working lengths allow inspection up to 10 meters (6.0mm).

Small probe diameters are recommended to inspect the smallest areas such as heat exchangers, connectors, aviation components or airframes.

Large diameters are recommended to inspect pipes, turbine blades, combustion chambers, cooling tubes, and many more.

Probes in diameters 2.8 - 3.9 & 6.0mm are available with either 0° or 90° direction of vision. It allows side inspection on welding or tube integrity for example.



0° direction fixed objective available in all diameters.



90° direction fixed objective available up to 10 meter length.
Ideal For NDT welding Inspections

Easy probe change in seconds

On this videoscope probes are interchangeable provided that the diameter are the same. If you are interested in several diameters and lengths, you will need to notify us in advance, so that we can adapt the device to your needs. If this request occurs after purchasing the Pro C HD, it is still possible to adapt your device, you will just need to return us the product so that we can update it.

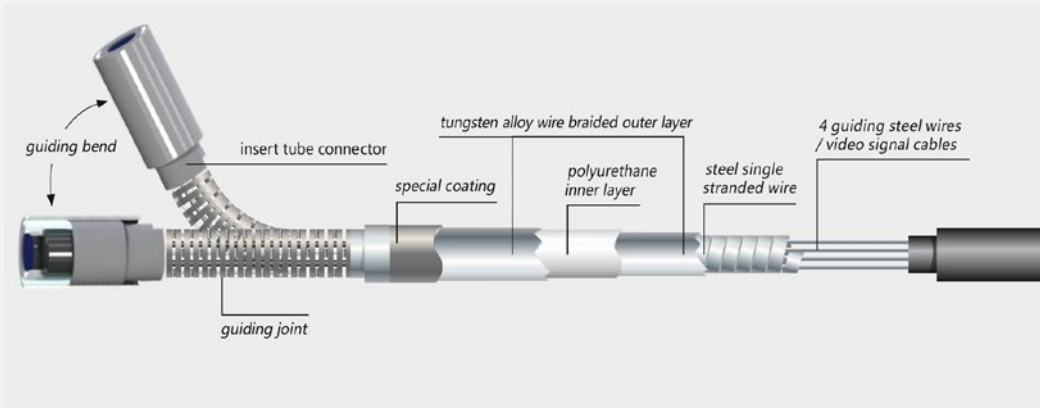
You can easily replace probes of each diameter in a matter of seconds. Thus resulting in multiple working inspection possibilities.



After Sales Service: Repair costs are largely reduced due to the fact that repair estimates are based on price of spare video probes. When a probe is damaged during use, simply remove it from the videoscope and send it back to us. We have probes available on stock, so it can be exchanged for a new one **reducing maintenance downtime** to 0.

GLOBAL FEATURES & BENEFITS

Wear resistant video probe



The insertion tube is woven with tungsten alloy wire, which has a tighter braiding layer than the stainless steel wire insertion tube, which improves the wear resistance of the insertion tube by 20 times and effectively prolongs its service life.

Tip is in Titanium alloy and its offers a sapphire protective lens.

On request, sheathing can be made of Fluorosilicone material (medical grade) for tube inspection in food industry to avoid any scratches during inspection.

Adapted to harsh environments

The sapphire glass greatly reduces the risk of scratches on objective. This offering longer life of the videoscope. Probes are IP67 rated (IP57 for 90° probes).



Waterproof, oil and anti corrosion resistant.

Wifi compatible up to 10 m

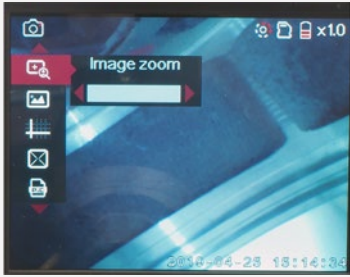


The PRO C HD is available with a Wifi module allowing multiple screen visualization of image. It is compatible with any ANDROID based tablet or Smartphone. Simply download the Bipol app online and start downloading your images and videos directly from the SD card, this allows you to view your images on a bigger screen and share them.

Thanks to the conference mode you will be able to share live images and videos with other people, allowing them, for example, to follow a live inspection carried out in an elevated area from the ground.

See the Invisible

FEATURES & BENEFITS COMPLETE INTERFACE



Zoom in and out. Can be adjusted from 1x to 4x.



Images and videos are listed in a preview list with instant access for reviewing and editing.



Live image can be displayed in either normal, Black & White or negative mode.



You can rotate in real time the image 180° to have constant upright picture.

High quality images and videos



TURBINE BLADE



WELDING

Record still images (JPEG up to 32 000) or video (MP4 up to 500 hours) in high resolution. Image and video resolution is up to 1280x720 pixels.



HDMI video output



HDMI ready & Daylight display

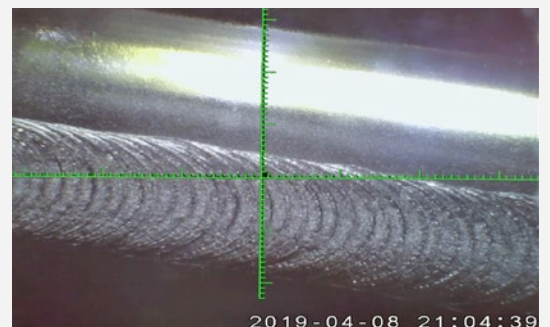
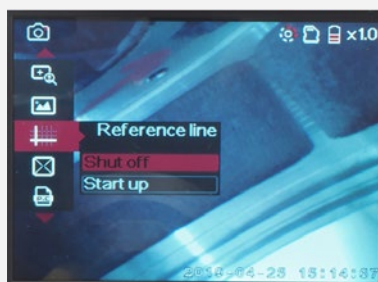
Connect the videoscope PRO C HD to any monitor with the Mini HDMI cable provided for high resolution visualization of live images on a large screen.

The 3.5" LCD screen allows clear outdoor inspection in daylight without any reflection on the screen, for a clean and comfortable work.

OSD Ruler for measurements

It is also equipped with an on screen display Ruler on 2 axis.

This allows standard measurements of sizes of cracks in aviation maintenance, wear, weldings or corrosion for example.



FULLY EQUIPPED LIGHTWEIGHT & COMPACT VIDEOSCOPE

Discover the two versions of our PRO C HD: the standard version and the Pro C Wifi Kit. The Wifi Kit is a Premium version developed from our experience and your recommendations to celebrate the 50th anniversary of our company.

Pro C HD



- 1 Robust, shock proof but light and easy to carry carrying case with fittings for all parts, accessories (except rigid sleeve) and up to 3 probes.
- 2 Mini HDMI cable for connection to LCD external monitor
- 3 USB Charging cable with EU adapter
- 4 Micro SD USB card reader
- 5 Spare batteries (in option)
- 6 PRO C HD videoscope
- 7 Magnetic base (+ screwdriver)

Pro C Wifi Kit

This complete and ready-to-use work set includes standard **Pro C HD** components as well as the following:

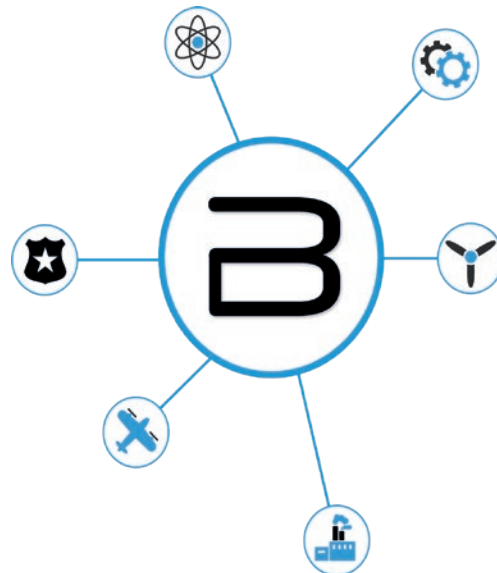
- 8 A reinforced and waterproof carrying case 46x59x22cm with preformed foam to contain and protect all the equipment.
- 9 Preconfigured Samsung 8.0" tablet with Bipol App installed. Accessories: shockproof tablet case and protective film + magnet.
- 10 Pouch with spare battery and battery charger
- 11 Rigid stainless steel sleeve (optional)



Diameters 4.8 & 8.0mm - length 430 mm

See the Invisible

Technical data	PROC HD 20	PROC HD 28	PROC HD 39	PROC HD 48	PROC HD 60
Screen	3.5" anti reflective for daylight use				
- Articuable version	Yes	Yes	Yes	Yes	Yes
Camera diameters	2.0 mm	2.8 mm	3.9 mm	4.8 mm	6.0 mm
Working length	1.0 - 1.5 & 2.0 m	1.0 - 1.5 & 3.0 m	1.5 - 2.0 & 3.0 m	1.5 - 2.0 & 3.0 m	1.5 - 2 - 3 - 4 - 5 - 6 - 7 & 10 m
Articulation	4 x 110°	4 x 130°	4 x 160°	4 x 160°	4 x 160° (100° for 6 - 7m and 90° for 10m)
- Non articuable version	Yes	Yes	No	No	No
Camera diameters	2.0 mm	2.8 mm	-	-	-
Working length	1.0 - 2.0 & 3.0 m	1.5 - 3.0 - 4.0 & 5.0 m	-	-	-
Camera resolution	200.000 px	200.000 px	1.000.000 px	1.000.000 px	1.000.000 px
Direction of vision	0°	0° or 90°	0° or 90°	0°	0° or 90°
Field of view	120°	120°	90°	90°	90°
Focusing range	2-50 mm	5 -100 mm (5 - 50 mm on 90°)	10-100 mm (5 -100 mm on 90°)	10-100 mm	
Illumination	White LEDs or Optical fiber bundle (on request)				
Sheathing	Tungsten braid 4 layers - titanium tip & sapphire glass cover				
Protection rate	Host : IP57 - Probe : IP 67 (oil & water resist) - 90° probes are IP57 only				
Interface	4X digital zoom - Ruler - Image rotation 360° - Image preview - Wifi				
Power supply	110-220 Va EU plug - US & GB adapters available				
Battery	Removable LI-ion 18650 (4 hours runtime - 4 hours charging time)				
Connections	Video out, mini USB, HDMI				
Recording	Micro SD card 32 GB				
Images	640x480 JPEG	640x480 JPEG	640x480 JPEG	up to 1280x720 JPEG	up to 1280x720 JPEG
Videos	640x480 MP4	640x480 MP4	640x480 MP4	up to 1280 x 720 MP4	up to 1280 x 720 MP4
Working temperatures	-10°C to + 60°C				
Net weight (without probe)	0.55 kg				
Case dimensions	PROC. 42x34.5x17 cm (compatible with most airline hand luggage requirements) KIT Wifi PROC. 46x59x22 cm				
Gross weight	PROC. 4.5 kg - Kit Wifi PROC. 7.0 kg				
Warranty	1 year				



BIPOL

3 rue St rémi 51430 BEZANNES - France

www.bipol.fr | info@bipol.fr