

**Dino-Lite**  
Digital Microscope  
The Industry Standard

DINO-LITE PRODUCT RANGE FOR:

JEWELERS, WATCHMAKERS,  
GEMOLOGISTS AND DIAMOND  
DEALERS



## APPLICATIONS

The Dino-Lite digital microscopes are tailored for a broad range of user groups. In the diamond, watch and jewelry business the following target groups can be distinguished:

- > Watch repair and manufacturing
- > Gemologists
- > Diamond jewelers and traders
- > Diamond cutters
- > Jewelers
- > Gemstone collectors

## A PROFESSIONAL SOLUTION

Professional solution for inspection, quality control, classifying and working on jewelry, watches, diamonds and gemstones. The series with long working distance of up to 15 cm enables the user to work under the microscope. The built-in adjustable polarizer helps to reduce glare on shiny objects. Available in composite and full aluminum alloy housing.

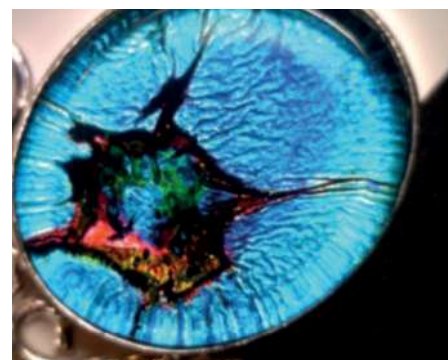
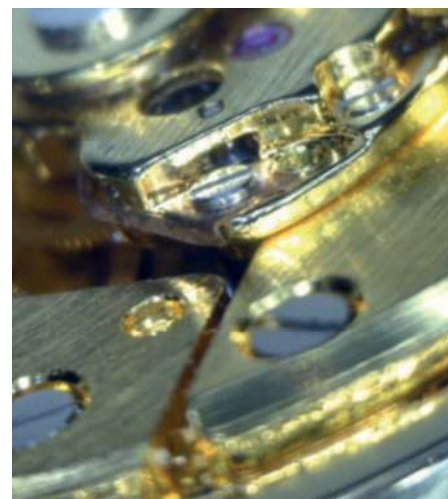
## A POWERFUL TOOL

Dino-Lite has developed a special range of microscopes and accessories, tailored to fit the needs of the jewelry industry. Specially designed polarized lighting makes it an ideal solution for inspection and working on jewelry, watches or precious stones. Bundled with the DinoCapture for Windows or DinoXcope for Macintosh software, the Dino-Lite is a very powerful and easy to use tool.

---

THE POLARIZER GIVES CRYSTAL CLEAR IMAGES, EVEN WHEN WORKING WITH SHINY OBJECTS

---

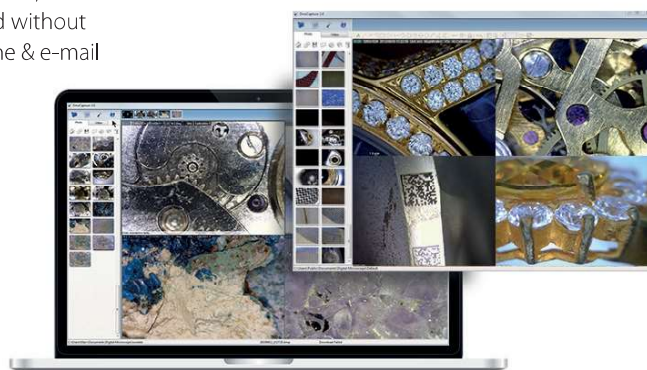


## DINO-LITE SOFTWARE

More info: [www.dino-lite.eu/support/software](http://www.dino-lite.eu/support/software)

### ADVANCED SOFTWARE INCLUDED

A professional, reliable software environment is essential when working with computer accessories like a USB microscope. All Dino-Lite USB products are equipped with an in-house developed software suite. The Dino-Capture software is continuously developed, is free of charge for Dino-Lite users and has an automatic update feature. DinoCapture software is available for Windows and DinoXcope for Macintosh computers. DinoCapture software is intuitive, user-friendly and can be used without hardly any training. Free online & e-mail software support is available.



### LANGUAGES

The DinoCapture 2.0 software is available in many languages, such as: English, German, French, Spanish, Chinese, Japanese, Portuguese, Italian, Russian, Dutch, Greek, Hungarian, Polish, Romanian, Swedish, Finnish, Danish, Czech, Croatian, Norwegian, Turkish.

### MAIN SOFTWARE FEATURES

- > Capturing photographs, videos or time-lapsed videos
- > Saving pictures in several formats
- > Advanced image processing
- > Measurement options like: line, radius, circle, 3-point circle, angle, etc.
- > Measurements on captured images or on live images
- > Calibration options
- > E-mail integration
- > Adding notes and markings on images
- > Skype integration for real-time on-line sharing with suppliers, customers or colleagues
- > Connect multiple Dino-Lite microscopes
- > Controlling lighting options from the software
- > IP functionality for remote viewing of microscopic images
- > Barcode/QR code recognition functionality
- > GPS integration

## DINO-LITE UNIVERSAL

More info: [www.dino-lite.eu/universal](http://www.dino-lite.eu/universal)

### AM4113ZT

The main features of the AM4113ZT are:

1.3 Megapixel sensor | USB 2.0 connection | 10-70x & 200x magnification | Adjustable integrated polarizer | 8 white switchable white LEDs | Extensive measurement functionality | Calibrated measurements



### AM4013MZT

The main features of the AM4013MZT are:

1.3 Megapixel sensor | USB 2.0 connection | 10-70x & 200x magnification | Adjustable integrated polarizer | 8 white switchable white LEDs | Metal housing | Extensive measurement functionality | Calibrated measurements.



## AM4815ZT

The main features of the AM4815ZT are:

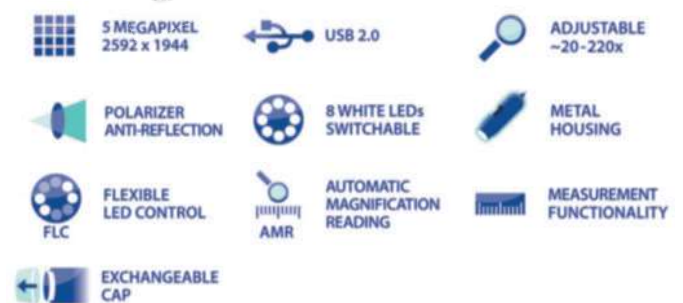
1.3 Megapixel sensor | USB 2.0 connection | 20-220x magnification  
Adjustable integrated polarizer | 8 white switchable white LEDs  
Extended Depth of Field (EDOF) | Extended Dynamic Range (EDR)  
Extensive measurement functionality | Calibrated measurements  
Exchangeable caps.



## AM7515MZT

The main features of the AM7515MZT are:

5 Megapixel sensor | USB 2.0 connection | 20-220x magnification  
Adjustable integrated polarizer | 8 white switchable white LEDs  
Metal housing | Flexible LED Control (FLC) | Automatic Magnification Reading (AMR) | Extensive measurement functionality | Calibrated measurements | Exchangeable caps.





## DINO-LITE LONG WORKING DISTANCE

More info: [www.dino-lite.eu/longworkingdistance](http://www.dino-lite.eu/longworkingdistance)

### AM4113ZTL

The main features of the AM4113ZTL are:

1.3 Megapixel sensor | USB 2.0 connection | 10-90x magnification  
Long Working Distance (LWD) | Adjustable integrated polarizer  
8 white switchable white LEDs | Extensive measurement functionality  
Calibrated measurements.



### AM4013MZTL

The main features of the AM4013MZTL are:

1.3 Megapixel sensor | USB 2.0 connection | 10-90x magnification  
Long Working Distance (LWD) | Adjustable integrated polarizer  
8 white switchable white LEDs | Metal housing | Extensive measurement functionality  
Calibrated measurements.



## AM4815ZTL

The main features of the AM4815ZTL are:

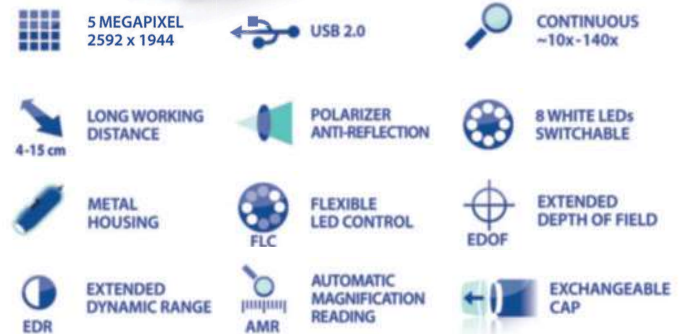
1.3 Megapixel sensor | USB 2.0 connection | 10-140x magnification  
Long Working Distance (LWD) | Adjustable integrated polarizer  
8 white switchable white LEDs | Extended Depth of Field (EDOF)  
Extended Dynamic Range (EDR) | Extensive measurement functionality  
Calibrated measurements | Exchangeable caps.



## AM7915MZTL

The main features of the AM7915MZTL are:

5 Megapixel sensor | USB 2.0 connection | 10-140x magnification  
Long Working Distance (LWD) | Adjustable integrated polarizer  
8 white switchable white LEDs | Metal housing | Flexible LED Control (FLC) | Extended Depth of Field (EDOF) | Extended Dynamic Range (EDR) | Automatic Magnification Reading (AMR).



## DINO-LITE EYEPIECE

More info: [www.dino-lite.eu/eyepiece](http://www.dino-lite.eu/eyepiece)

### EYEPIECE CAMERAS

With the DinoEye eyepiece cameras you can turn your conventional microscope into a digital microscope. You can easily replace the ocular (eyepiece) of your non-digital microscope with the DinoEye eyepiece and connect it via USB to your computer.

The DinoEye TV models can be connected straight into your TV using a TV connection. With the included proprietary DinoCapture software you have a professional software environment for image or video processing, including calibrated measurement features (USB models only).

### AM4025X

The AM4025X has different adapters to fit microscopes with 23, 30 or 30,5 mm eyepieces. The DinoCapture software is bundled with the product.



### AM7025X

The DinoEye Edge 5MP eyepiece camera provides superior image quality and true colour reproduction.





## DINO-LITE ACCESSORIES

More info: [www.dino-lite.eu/accessories](http://www.dino-lite.eu/accessories)



### RK-06A

The Dino-Lite RK-06A stand is a sturdy and stable mid-range stand solution that can be used with all Dino-Lite digital microscopes. It is constructed of stainless steel and lightweight aluminum and offers precise focus adjustment as well as a quick vertical release function.



### RK-10A

The Dino-Lite RK-10A is a sturdy and stable high-end stand solution that can be used with all the professional Dino-Lite models. It is constructed of resilient stainless steel and lightweight aluminum and offers a precise focus adjustment as well as a quick release function.



### RK-10-FX

The RK-10-FX is an optional flexible arm extension for the RK-06A and the RK-10A stand.



### RK-10-PX

The RK-10-PX is a XY positioning arm with accurate and smooth adjustment options. It is a great add-on to the high precision RK-10A and the RK-06A stand.



### RK-10-EX

The RK-10-EX is an optional horizontal arm attachment for the RK-06A and the RK-10A stand.



### RK-10-VX

RK-10-VX is an optional vertical arm attachment for the RK-06A and the RK-10A stand.

## DINO-LITE ACCESSORIES

More info: [www.dino-lite.eu/accessories](http://www.dino-lite.eu/accessories)

### PHOTONIC OPTICS PH-F1

Fibre-optic lighting systems consist of a light source and a fibre-optic light guide. By using fibre optics the sample is not effected by any warmth at all.

More photonic optics on: [www.dino-lite.eu](http://www.dino-lite.eu)

### RK-02

The RK-02 is a durable gooseneck stand solution designed for flexible and versatile usage with a Dino-Lite digital microscope.

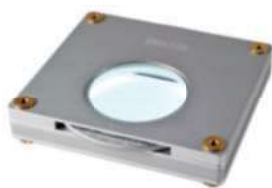
### WF-10

The WF-10 WiFi Streamer allows Dino-Lite USB 2.0 models to be used wirelessly in connection with an iOS (iPhone/iPad) or Android app on a tablet, smartphone, or computer.



### BL-ZW1

The backlight has a built in, freely rotatable polarizer. The accessory is ideally suited to work with Dino-Lite models that have the polarization filter.



### N3C-R

The N3C-R is a passive ring light solution that helps to reveal more details by generating shadow-less illumination.

