

## Universal digital bevel protractor

This digital bevel protractor displays both decimal degrees and degrees-minutes-seconds at the same time.

- Measuring range (switchable): 1x 360°,  
2x 180°,  
4x 90°.
- Resolution: 0.008° and 30".
- Accuracy:  $\pm 0.08^\circ$  or  $\pm 5'$ .
- On/off switch.
- Reset/preset.
- Reversible measuring direction.
- Fine adjustment.
- Delivery in a case with three blades (150, 200 and 300 mm), a square and an acute angle attachment.
- Power supply: 1 battery type CR2032.



Item No.	Description	Price EUR
907.885	Bevel protractor	
<b>Option:</b>		
495.157	Spare battery	

### Single blades

Item No.	Blade length/mm	Price EUR
909.380	150	
909.381	200	
909.382	300	
909.383	500	
909.384	600	
909.385	800	

008-302-QControl-2011-90702

## Universal digital bevel protractors

Digital bevel protractors made of stainless steel, with blades of 150, 200, 300 or 500 mm. The blades and all the measuring faces are hardened.

- Measuring range (switchable): 1x 360°,  
2x 180°,  
4x 90°.
- Resolution: 1', or decimal 0.01°.
- Accuracy: ± 2'.
- Clamping spring system for blade.
- Indication switchable from degrees and minutes to decimal degrees.
- Automatic switch-off after 10 minutes of idle time with storage of the displayed measuring value.
- Opto-RS232C data output.
- Reset/preset/hold functions.
- Fine adjustment.
- Delivery in a case.
- Power supply: 1 battery type CR2032.



856.688

### Complete bevel protractors

Item No.	Blade length/mm	Price EUR
856.688	150	
856.689	200	
856.690	300	
856.691	500	

#### Options:

- 495.157 Spare battery
- 856.694 Prism base
- 856.695 Ledge
- 781.887 Opto-RS232C cable

### Single blades

Item No.	Blade length/mm	Price EUR
856.685	150	
856.693	200	
856.687	300	
856.686	500	



856.694



856.695

C08 202 QControl 20180702

## Universal digital bevel protractor

This stainless steel, digital bevel protractor is available with blades from 150 to 1000 mm. The blades and all the measuring faces are hardened.

- Measuring range:  $\pm 360^\circ$ .
- Resolution: 1', or decimal 0.01°.
- Accuracy:  $\pm 2'$ .
- Repeatability: 1'.
- Indication switchable from degrees and minutes to decimal degrees.
- + and - direction reversible.
- Per 90° adjustable.
- Data output, Mitutoyo Digimatic compatible.
- On/off switch.
- Reset/preset/hold functions.
- Control with 5 keys for several functions.
- Fine adjustment.
- Delivery in a case without blade.
- Power supply: 1 battery type CR2032.



### Single blades

Item No.	Description	Price EUR
855.820	Bevel protractor	
<b>Options:</b>		
495.157	Spare battery	
905.409	Data cable 2 m	

Item No.	Blade length/mm	Price EUR
909.380	150	
909.381	200	
909.382	300	
909.383	500	
909.384	600	
909.385	800	
855.827	1000	

C08 203 QControl 20190702

### Dial bevel protractor

- Measuring range: 4 x 90°.
- Graduation: 5'.
- Fine adjustment.
- Hardened stainless steel construction.
- Delivery in a case with 300 mm blade and an acute angle attachment.



#### Single blades

Item No.	Blade length/mm	Price EUR
909.380	150	
909.381	200	
909.382	300	
909.383	500	
909.384	600	
909.385	800	

Item No.	Description	Price EUR
906.504	Bevel protractor	

### Bevel protractor with magnifier

- Measuring range: 4 x 90°.
- Vernier: 5', parallax-free.
- Hardened stainless steel construction.

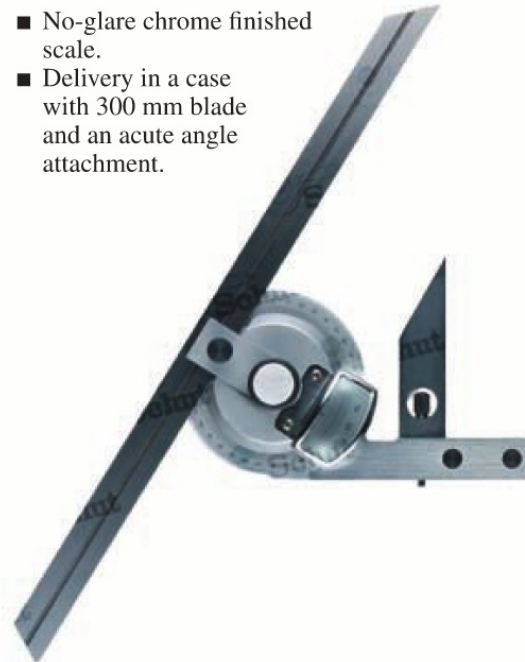
- No-glare chrome finished scale.
- Delivery in a case with 300 mm blade and an acute angle attachment.



Item No.	Description	Price EUR
906.502	Bevel protractor with magnifier	
<b>Option:</b>		
906.505	Spare magnifier	

#### Single blades

Item No.	Blade length/mm	Price EUR
909.380	150	
909.381	200	
909.382	300	
909.383	500	
909.384	600	
909.385	800	



C08.204.QControl.20180702

### Bevel protractor with magnifier

- Measuring range: 4 x 90°.
- Vernier: 5', parallax-free.
- Fine adjustment.
- Hardened stainless steel construction.
- No-glare chrome finished scale.

- Delivery in a case with two blades (150 and 300 mm) and an acute angle attachment.

Item No.	Description	Price EUR
855.801	Bevel protractor with magnifier	
<b>Option:</b>		
859.179	Spare magnifier	

#### Single blades

Item No.	Blade length/mm	Price EUR
909.380	150	
909.381	200	
909.382	300	
909.383	500	
909.384	600	
909.385	800	



### Universal bevel protractor

Universal bevel protractor with micrometer screw adjustment. One rotation of the screw corresponds to an angular change of 1°. Retraction of the micrometer screw enables fast adjustment of the blade and the scale.

- Measuring range: 4 x 90°.
- Graduation: 1'.
- Stainless steel construction, main parts are hardened.
- Delivery in a case with two blades (150 and 300 mm) and a reference square for checking the bevel protractor.



#### Single blades

Item No.	Description	Price EUR
855.811	Universal protractor with magnifier	
<b>Option:</b>		
859.019	Spare magnifier	

Item No.	Blade length/mm	Price EUR
909.380	150	
909.381	200	
909.382	300	
909.383	500	
909.384	600	
909.385	800	

### Combination bevel protractor

Can be used as bevel protractor, ruler, depth gauge, try square, center square and spirit level.

- Measuring range: 0 - 180° (90 - 0 - 90°).
- Graduation: 1°.
- Double graduation.
- Rotatable.
- Scriber (included in square head).
- Protractor head and square head provided with a spirit level.
- Ruler length: 300 mm.
- Delivery with protractor head, square head, center head, and ruler with mm/mm graduation.

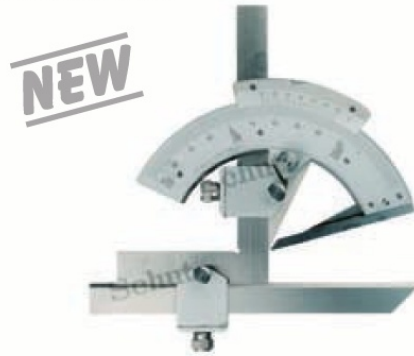


Item No.	Description	Price EUR
906.503	Combination bevel protractor	

### Combination bevel protractor

Stainless steel combination bevel protractor with blade and flat square.

- Measuring range: 0 - 320°.
- Measuring inside and outside angles.
- Accurate adjustment by rack railway.
- Vernier: 2'.
- Delivery in a case.



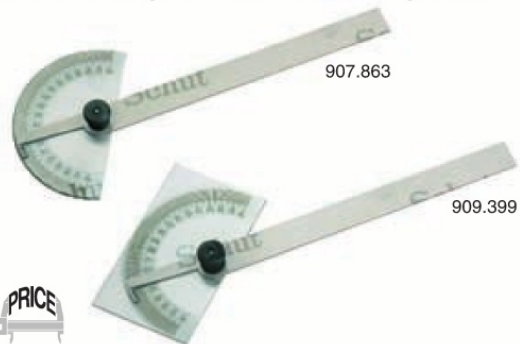
Item No.	Description	Price EUR
910.215	Combination bevel protractor	

### Bevel protractors

Simple and easy to use protractors with a semicircular or rectangular head and swivelling blade.

- Measuring range: 0 - 180°.
- Graduation: 1°.
- Scale diameter: 85 mm.
- Locking screw.
- Blade length: 150 mm.
- Hardened steel, no-glare chrome finished.

Item No.	Shape	Price EUR
907.863	semicircular	
909.399	rectangular	



C08 206 QControl 20180702

### Digital bevel protractors

- Measuring range: 0-180° (with swivelling blade) or 10-170° (with sliding blade).
- Graduation: 0.05°.
- Accuracy: 0.3°.
- On/off switch.
- Reset/hold function.
- Rotatable display value.
- Locking screw.
- Power supply: 1 battery (CR2032).



Item No.	Scale ø/mm	Blade length/mm	Price EUR
<b>With swivelling blade:</b>			
906.457	120	150	
906.458	150	200	
906.459	200	300	
<b>With sliding blade:</b>			
906.767	100	150	
906.768	150	300	
906.769	200	400	
<b>Option:</b>			
495.157	Spare battery		



906.457



**NEW**



906.767

C08 312-QControl-20180702

### Bevel protractors

- Measuring range: 0-180° (with swivelling blade) or 10-170° (with sliding blade).
- Graduation: 1°.
- Locking screw.
- Hardened steel, no-glare chrome finished.
- Graduation placed by laser.



Item No.	Scale ø/mm	Blade length/mm	Price EUR
<b>With swivelling blade:</b>			
907.864	80	120	
907.865	120	150	
907.866	150	200	
907.867	200	300	
907.868	300	500	
<b>With sliding blade:</b>			
907.869	100	150	
907.870	150	300	
907.871	200	400	
907.872	250	500	
907.873	300	600	

### Setting bevel

- Special steel.
- Moveable blade locked with a wing nut.



Item No.	Blade length/mm	Price EUR
910.088	200	
910.089	300	
910.090	500	

### Universal digital bevel protractor with spirit level

Digital bevel protractor for measuring both inside and outside angles. The measuring value is displayed upright at any time. Equipped with four holes and a locking knob for measuring a specific angle.

- Measuring range: 360°.
- Resolution: 0.05°.
- Accuracy: ±0.2°.
- ABS/INC switchable.
- With digital-analog display of the measured value.
- Reversal of display value.
- On/off switch.
- Hold function.
- Reversible measuring direction.
- Aluminum casing.
- Rotatable blade of metal.
- Dimensions: 254 x 50 x 36 mm.
- Power supply: 1 battery type CR2032.

Item No.	Description	Price EUR
909.503	Bevel protractor	
<b>Option:</b>		
495.157	Spare battery	



**QControl**  
We Measure Quality



C08.207-QControl.20180702



## Universal digital bevel protractors

Digital bevel protractors for measuring both inside and outside angles. Equipped with a locking knob for measuring a specific angle.

- Measuring range:  $\pm 360^\circ$ .
- Resolution:  $0.1^\circ$ .
- Accuracy:  $\pm 0.3^\circ$ .
- On/off switch.
- Automatic switch-off.
- Zero setting at any position.
- Graduation rulers: 1 mm and 1/32 inch.
- Cross-section rulers: 35 x 2.5 mm.
- With fixing holes.
- Locking screw.
- Power supply: 1 battery type CR2032.



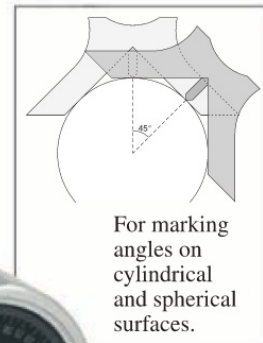
Item No.	Ruler length/mm	Price EUR
909.505	200	
909.506	300	
909.507	500	
<b>Option:</b>		
495.157	Spare battery	

## Magnetic clinometers with center point finder

Accurate clinometers with an extremely sensitive, balanced needle. The magnetic base with  $90^\circ$  V-groove is precision milled. The center point finder can be used as a center punch.

Very suitable for angular measurements, surface alignment, and the determination of center points and highest/lowest points of cylindrical and spherical surfaces. Therefore ideal as a universal aid to the installation of larger constructions.

- Measuring range:  $360^\circ$ .
- Graduation:  $1^\circ$ .
- Scale numbering: 0-360 clockwise (CW) or counterclockwise (CCW), or 0-90-0.
- Aperture V-groove (horizontal): 82 mm (for shafts up to  $\varnothing 115$  mm).
- Dimensions  $h \times w \times d$ : 130 x 130 x 27 mm.



For marking angles on cylindrical and spherical surfaces.



Item No.	Scale numbering	Price EUR
856.702	0-360 CCW	
856.703	0-360 CW	
856.704	0-90-0	
<b>Options:</b>		
856.705	Wooden case	
856.706	Suction magnifier glass	

C08 303 QControl 20180702