

## DIAL GAUGES – ANALOGUE WITH BACK MOUNTED PLUNGER

Mechanical dial gauges with back mounted plungers differentiate by their concept of presenting a display which is perpendicular to the movement of the measuring stem.

### Dial Ø 40 mm – Reading 0,01 or 0,002 mm



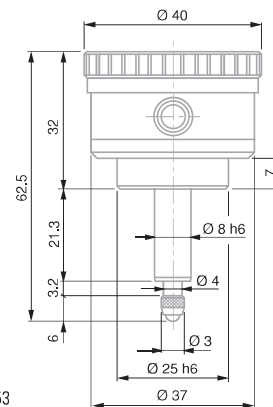
CP352S



CP353



CP355



CP353

- EN ISO 463  
Factory standard
- Rotating dial
- Full-metal casing,  
Mounting shank and  
plunger in hardened  
stainless steel
- With anti-shock  
mechanism
- Adjustable tolerance  
markers. Thread  
M2,5 for measuring  
insert. Fastening  
with sleeve Ø 8h6  
and 25h6
- Measuring insert  
with Ø 3 mm steel  
ball tip, already  
mounted
- Inspection report  
with declaration of  
conformity

No	=									
		mm	mm	mm	µm	µm	µm	mm		N
CP 353	COMPAC CP353	3	3,2	0,01	14	3	3	0,5	0 ÷ 25 ÷ 50	0,9
CP 355	COMPAC CP355	3	3,2	0,002	14	2	2,5	0,2	0 ÷ 10 ÷ 20	0,9
CP 352S	COMPAC CP352S with limited travel	± 0,4	3,2	0,01	9	3	3	(1)	40 ÷ 0 ÷ 40	0,9

S: Limited range of indication, restricted reading.

The needle makes less than one revolution of the dial, all reading errors due to revolution counter are eliminated.