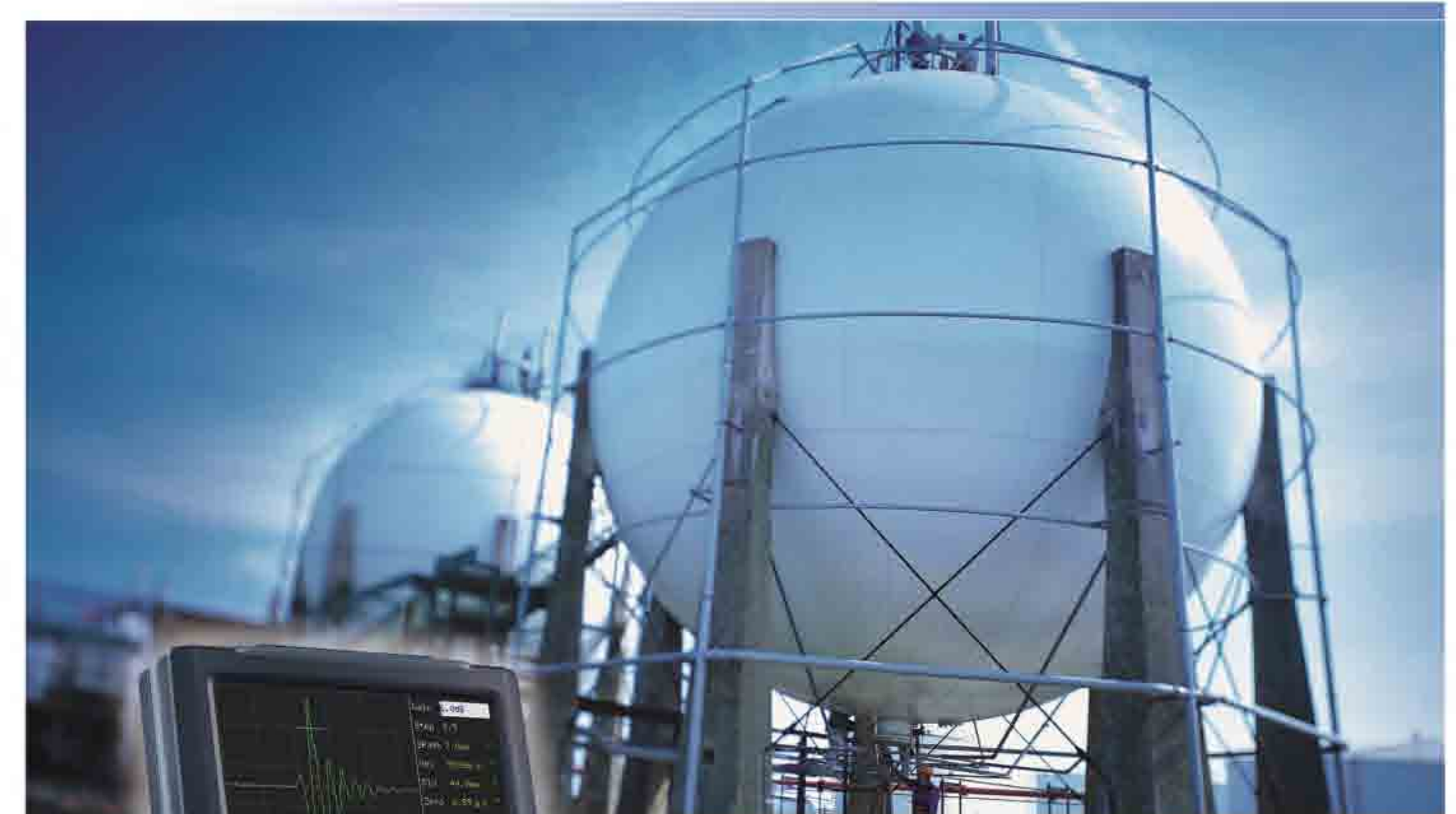


Function	Unit	Specifications
Attenuator Error	dB	Every 12dB ±1dB
Vertical Linearity Error	%	≤3
Dynamic Range	dB	≥30
Horizontal Linearity Error	%	≤0.5
Operating Frequency Range	MHz	0.5~10, with steps of 1~4 / 0.5~10
PRF	Hz	10 steps (20~500Hz adjustable but subject to detection range, material velocity, pulse shift, probe delay, etc.)
Thin Plate Resolution	mm	≤3 (with a 5C10N probe)
Detection Range	mm	0 ~ 13000 (Longitudinal wave in steel)
Pulse Shift	mm	-10 ~ 1000 (Longitudinal wave in steel)
Probe Zero	μs	0 ~ 200
Material Velocity	m/s	400 ~ 15000
Damping		Low / High
Reject	%	0 ~ 80
Rectify		Positive, Negative, Full, Filter
Gain Adjustment	dB	0 ~ 110, with steps of 0.5 / 2 / 6 / 12
DAC Curve		For making, setting and applying DAC curves
AVG Curve		For making, setting and applying AVG curves
Screenshot		Save the system screen as an image and output to a USB disk
USB Port		Save the system internal data sets to a USB disk via the USB port
Gate		Gate mode: off / positive / negative / positive with alarm / negative with alarm
Storage		300 data sets, including system setup, detection state, echo figures, etc.
Auto Gain		Enabling the echo amplitude within the gate auto adjusted to a designated amplitude Amplitude setup: 40% / 50% / 60% / 70% / 80% / 90% / 100%
Peak Memory		Display waveform envelope
Peak Echo		Record waveforms including the highest echo
Freeze		Freeze screen waveforms
Auto Calibration		For calibrating material velocity and probe delay. Calibration mode: Velocity and Zero / Velocity / Zero
Angle Measurement		Measure probe angle
Measure Unit		inch / mm
Language		Up to eight kinds of language for selection, including Chinese, English, Japanese, French, Spanish, Russian, German, Portugese
Display Screen		5.7" high brightness TFT LCD, 320 x 240 pixels
Operating Time	h	≥7
Operating Voltage	V	9~12 DC (external power supply); 6.5~8.4 (battery)
Operating Temperature	°C	-10~40
Weight	kg	Approx. 1.15 (including battery)
Dimension	mm	152 × 240 × 52 (W×H×L)

Digital Ultrasonic Flaw Detector

CTS-9006



Small Size

Multi-Purpose

Low Consumption

High Performance

Easy Operation

Lightweight

SIUI

Shantou Institute of Ultrasonic Instruments Co., Ltd.

Add: #77, Jinsha Road, Shantou 515041, Guangdong, China

Tel: +86-754-88250150 Fax: +86-754-88251499

E-mail: siui@siui.com Website: http://www.siui.com



SIUI

Specifications and appearance are subject to change without prior notice.
DCYZ78 EN CTS-9006, CYS8A01

CTS-9006

Portable, Easy-to-Use, Reliable

— New Generation General-Purpose Digital Flaw Detector

Compact & Portable: The whole unit weight (battery included) is approx. 1.15kg, suitable for aloft and field work.

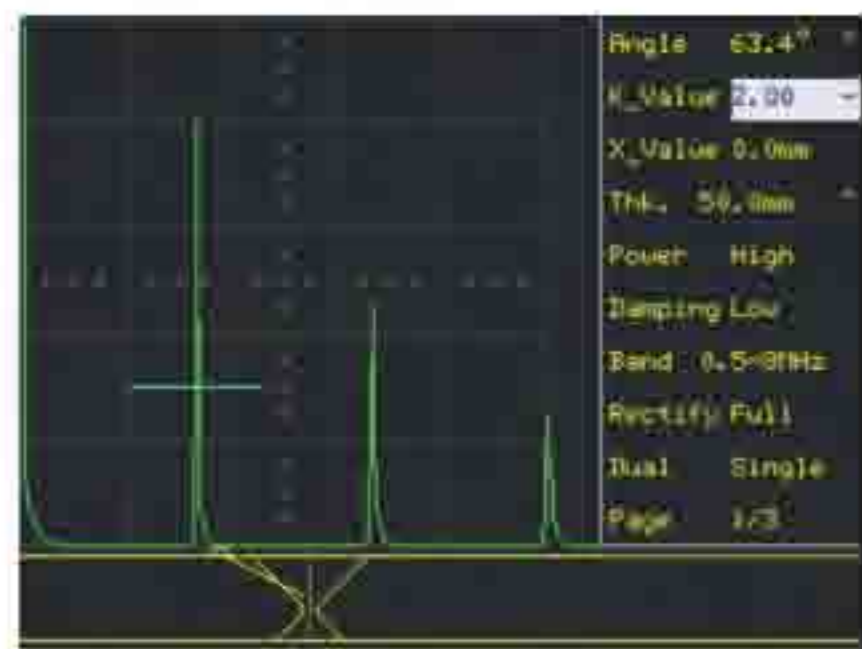
Easy to Use: There are just a few concisely-defined keys, easy to be operated with only one hand.

Environmental Protection: This system is designed based on IP65 (Optional IP67) standard, suitable for complex industrial flaw detection environment.

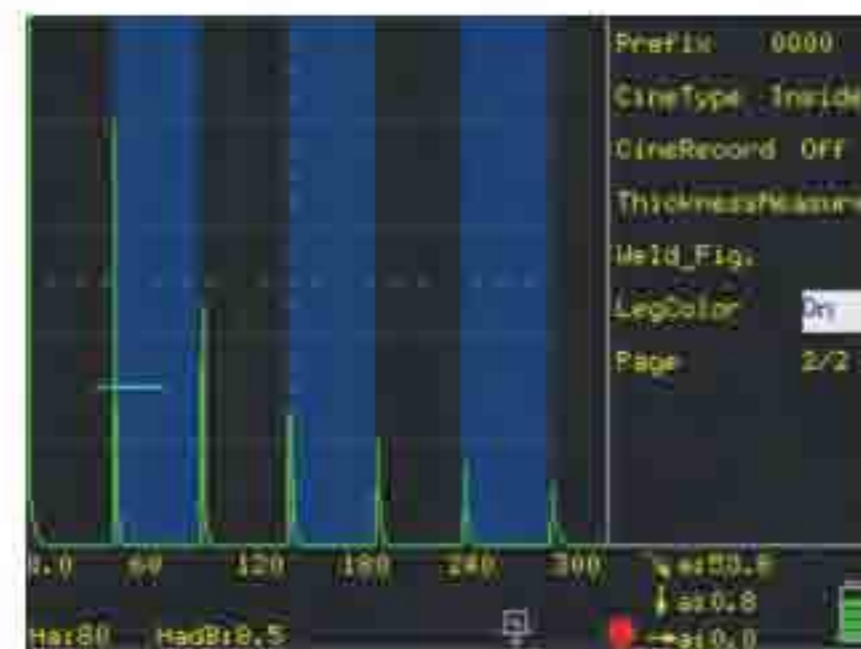
Super-low Consumption: The configured Li-polymer battery can support up to 7-hour continuous operation.

Strong Performance: High resolution and penetration, achieving precise flaw detection from thin plates to large forged pieces.

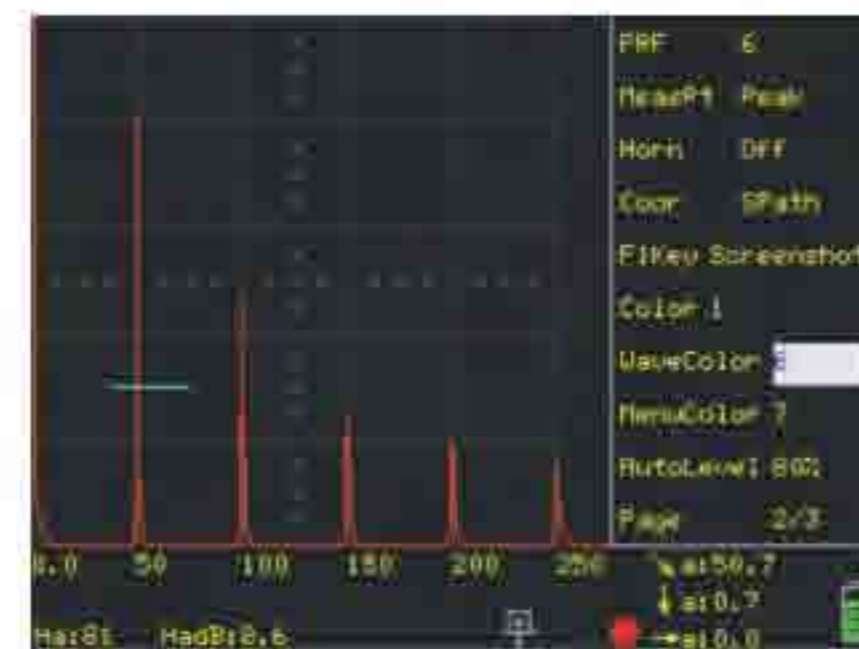
Superior Features



1 Weld groove profile function



2 Different color area display for odd and even number echo



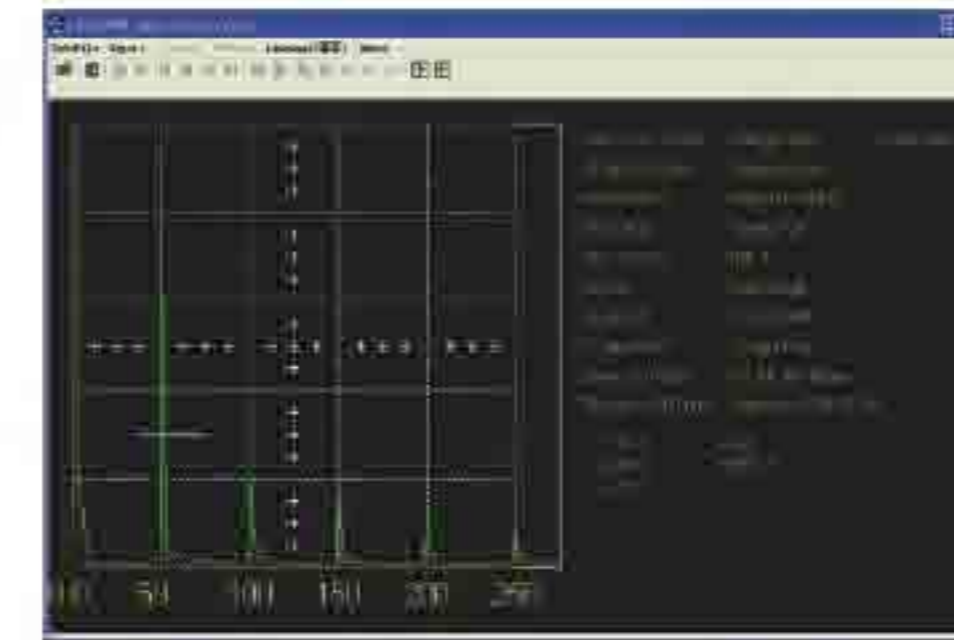
3 Up to 11 kinds of waveform colors for selection

- Max. sampling rate 240MHz; Measurement resolution 0.1mm.
- Operating frequency range: 0.5~10MHz.
- 20 ~ 500Hz PRF with 10 steps adjustable: avoid reverberation signals during flaw detection.
- The AGC (auto gain control) function, together with peak echo and image freeze function, help quickly identify the flaw highest echo, enabling efficient flaw detection.
- The AVG curve can make three curves of different equivalent values with one known flat-bottom hole or large flat-bottom echo.
- The DAC curve works with echo compare function, making echo quantification of different distances and amplitudes more convenient.
- The 5.7" color TFT LCD of wide viewing angle, high brightness and high definition delivers every clear detail.
- Peak memory function facilitates quick scanning and measurement on workpieces.
- Probe angle (K value) measuring function.
- Three different color schemes can meet the requirements of different application environments and habits.
- Up to 300 sets of curve and waveform can be saved for various workpieces and flaw detection standards.
- Support up to 8 kinds of language.

*EN-12668-1 compliant

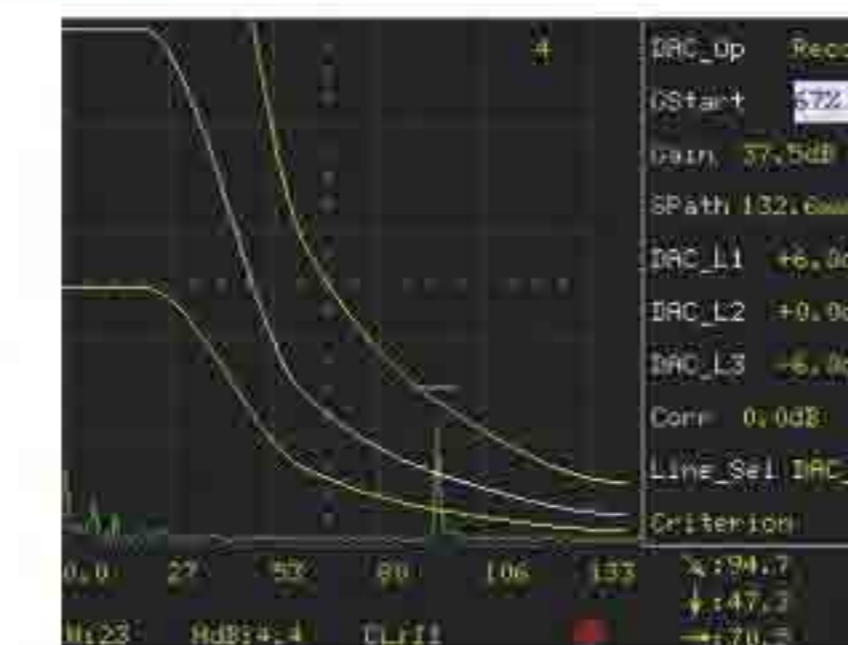
Application Examples

Data Storage



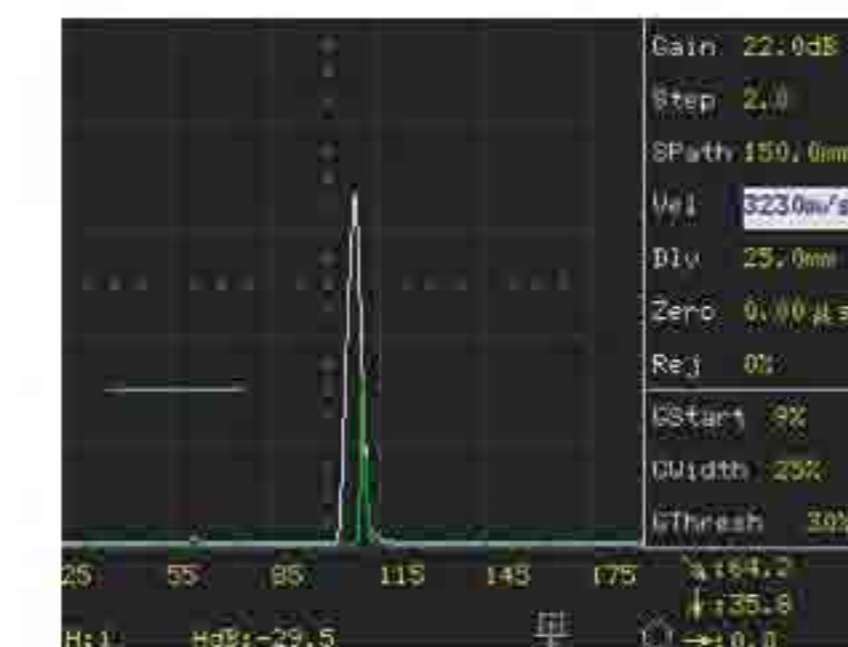
- Detection echoes, curves or parameters may be losslessly stored to a PC via the USB port, facilitating report editing and data management.

DAC Curve



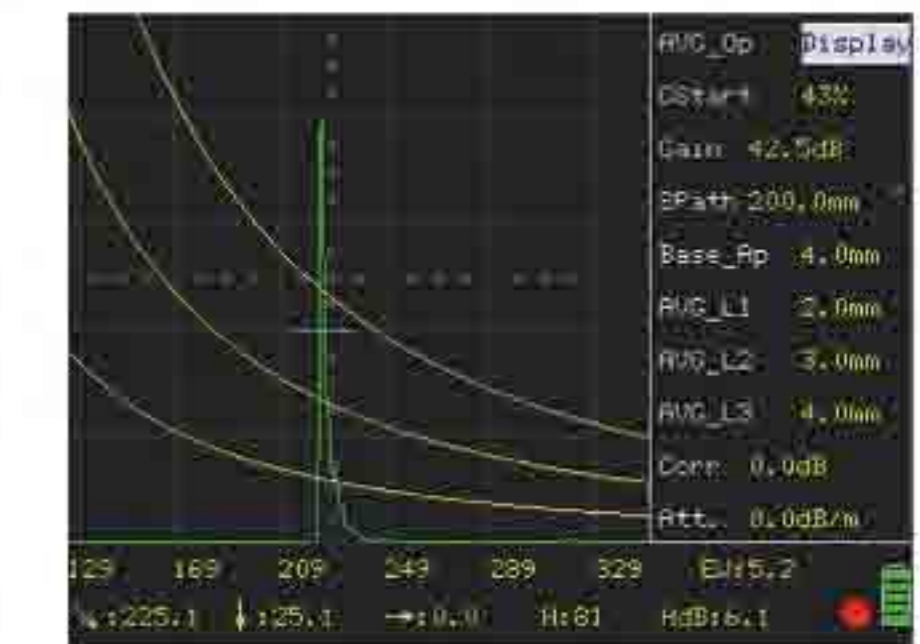
- The DAC curve function brings easier and more convenient flaw evaluation.

Peak Memory



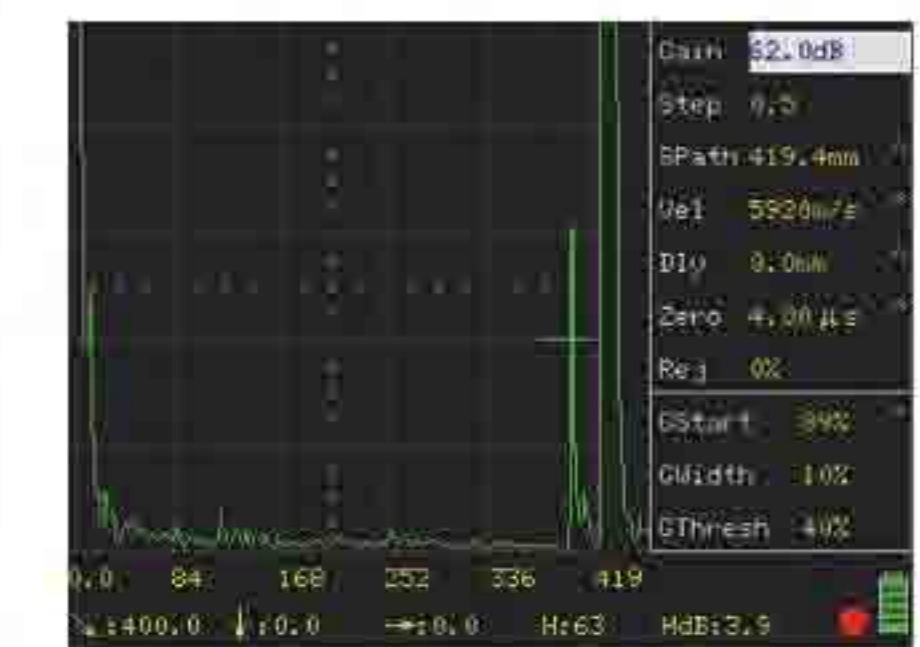
- Refresh the highest echo within the screen range automatically, completing flaw positioning quickly.

AVG Curve



- Three curves of different equivalent values will be auto created by taking a known flat-bottom hole or large flat-bottom echo for reference.

Detection on Large Forged Pieces



- The large detection range and high sensitivity surplus meet the requirements of detection on large forged pieces or coarse crystal materials.
- This picture shows an echo from a 400mm Φ 2 flat-bottom forged test block.