

Rigid industrial endoscopes

Our rigid industrial endoscopes allow the control of parts in many different fields. You will find a solution for each of your inspection need among our lines Ecofix PRO, HKB, SV, Xenon, RZ ou TEW. All our rigid endoscopes are compatible with video applications and can be connected to all major light sources of the market.



ECOFIX PRO rigid endoscopes

Very large line of rigid industrial endoscopes. Superior optical quality. integrates a light concentrator for better illumination. They all accept 90° removable and rotative mirror tubes and stainless steel protection sleeves for shock protection. Our line of Ecofix Pro is available on stock. The exclusive lens system allows to offer very competitive repair costs.



Aviation



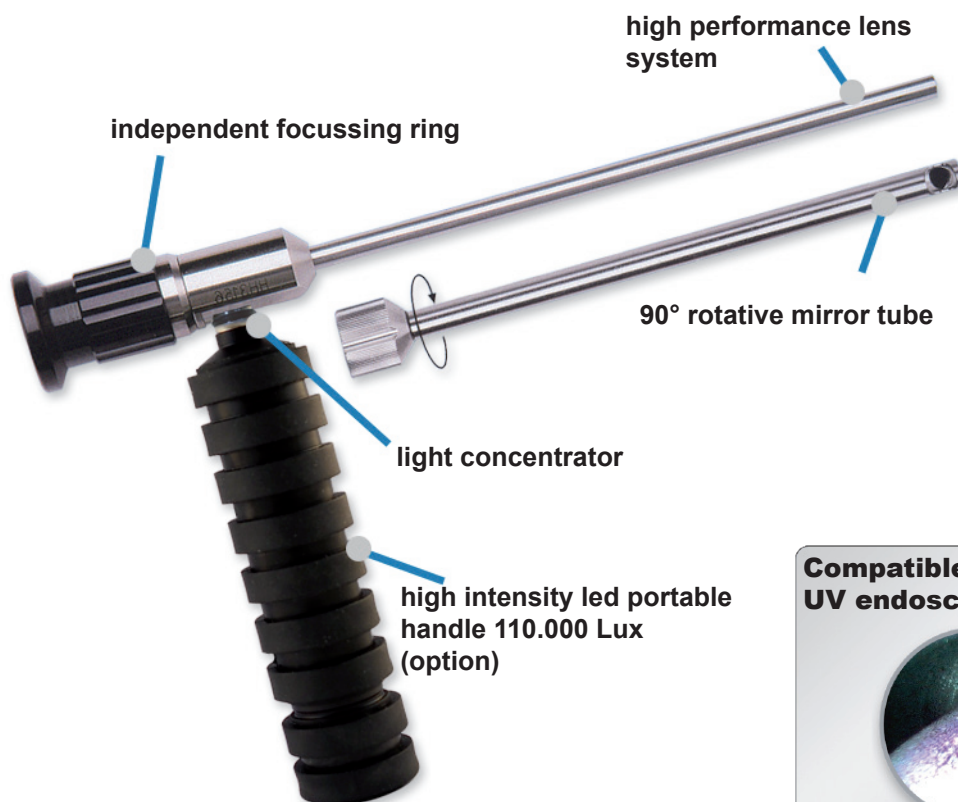
Fundry



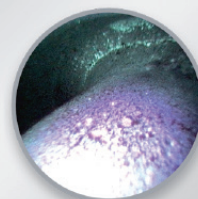
Automotive



Fine mechanics



Compatible with UV endoscopy



Endoscopes rigides ECOFIX PRO



Delivery program

Part No	Diameter mm	L.U mm	D.V	Champ
Ø 1.85mm				
604 000 100	1.85	80	0°	40°
604 000 268	1.85	127	0°	40°
604 000 290	1.85	180	0°	40°
Ø 2.40 / 2.80 mm				
604 000 500	2.40	100	0°	40°
604 000 501	2.40	185	0°	40°
604 000 510	2.80	265	0°	40°
604 000 515	2.80	350	0°	40°
604 000 520	2.80	435	0°	40°
Ø 4.20 mm				
604 000 502	4.20	180	0°	40°
604 000 503	4.20	305	0°	40°
604 000 504	4.20	435	0°	40°
604 000 505	4.20	560	0°	40°
Ø 6.35 / 7.20 mm				
604 000 506	6.35	180	0°	40°
604 000 507	6.35	305	0°	40°
604 000 540	6.35	435	0°	40°
604 000 541	6.35	559	0°	40°
604 000 542	7.20	730	0°	40°
604 000 543	7.20	940	0°	40°

Delivery program

Part No	Diameter mm	LU mm	D.V
Mirror tube for Ecofix Ø 1.85mm			
604 000 101	2.2	80	90°
604 000 268	2.2	127	90°
604 000 290	2.2	180	90°
Mirror tube for Ecofix Ø 2.4-2.8mm			
604 000 112	2.8	100	90°
604 000 113	2.8	185	90°
604 000 525	3.4	265	90°
604 000 530	3.4	350	90°
604 000 535	3.4	435	90°
Mirror tube for Ecofix Ø 4.2 mm			
604 000 123	4.8	180	90°
604 000 124	4.8	305	90°
604 000 125	4.8	435	90°
604 000 272	4.8	560	90°
Mirror tube for Ecofix Ø 6.35-7.20 mm			
604 000 545	8.0	180	90°
604 000 546	8.0	305	90°
604 000 547	8.0	435	90°
604 000 548	8.0	559	90°
604 000 549	8.0	730	90°
604 000 550	8.0	940	90°
Stainless steel sheath for Ecofix Ø 1.85mm			
604 000 267	2.2	80	-
604 000 270	2.2	127	-
604 000 292	2.2	180	-
Stainless steel sheath for Ecofix Ø 2.4-2.8mm			
604 000 220	2.8	100	-
604 000 221	2.8	185	-
604 000 526	3.4	265	-
604 000 531	3.4	350	-
604 000 536	3.4	435	-
Stainless steel sheath for Ecofix Ø 4.2 mm			
604 000 264	4.8	180	-
604 000 265	4.8	305	-
604 000 266	4.8	435	-
604 000 273	4.8	560	-



Part No	Description
604 000 214	Ecofix aluminium case (for endoscope up to 435 mm)
604 000 217	Ecofix PRO aluminium case (for endoscope up to 560 mm)
618 000 102	Ecofix cleaning kit: 1 spray - 3 packs of cotton swabs
604 000 208	Right angle adapter 90° rotatable L=100mm