

EN



Please note:  
**New prices** - valid from  
**July 1, 2022**  
see: [www.kern-sohn.com](http://www.kern-sohn.com)

**KERN**<sup>®</sup>

# Accessories



# 2022



PROFESSIONAL MEASURING

# KERN Pictograms



## Internal adjusting:

Quick setting up of the balance's accuracy with internal adjusting weight (motordriven)



## Adjusting program CAL:

For quick setting up of the balance's accuracy. External adjusting weight required



## Easy Touch:

Suitable for the connection, data transmission and control through PC or tablet. For details see page 123



## Memory:

Balance memory capacity, e.g. for article data, weighing data, tare weights, PLU etc.



## Alibi memory:

Secure, electronic archiving of weighing results, complying with the 2014/31/EU standard. For details see page 215



## Data interface RS-232:

To connect the balance to a printer, PC or network



## RS-485 data interface:

To connect the balance to a printer, PC or other peripherals. Suitable for data transfer over large distances. Network in bus topology is possible



## USB data interface:

To connect the balance to a printer, PC or other peripherals



## Bluetooth\* data interface:

To transfer data from the balance to a printer, PC or other peripherals



## WiFi data interface:

To transfer data from the balance to a printer, PC or other peripherals



## Control outputs (optocoupler, digital I/O):

To connect relays, signal lamps, valves, etc.



## Analogue interface:

to connect a suitable peripheral device for analogue processing of the measurements



## Interface for second balance:

For direct connection of a second balance



## Network interface:

For connecting the scale to an Ethernet network



## KERN Communication Protocol (KCP):

It is a standardized interface command set for KERN balances and other instruments, which allows retrieving and controlling all relevant parameters and functions of the device. KERN devices featuring KCP are thus easily integrated with computers, industrial controllers and other digital systems



## GLP/ISO log:

The balance displays serial number, user ID, weight, date and time, regardless of a printer connection



## GLP/ISO log:

With weight, date and time. Only with KERN printers, see page 163–165



## Piece counting:

Reference quantities selectable. Display can be switched from piece to weight



## Recipe level A:

The weights of the recipe ingredients can be added together and the total weight of the recipe can be printed out



## Recipe level B:

Internal memory for complete recipes with name and target value of the recipe ingredients. User guidance through display



## Totalising level A:

The weights of similar items can be added together and the total can be printed out



## Percentage determination:

Determining the deviation in % from the target value (100 %)



## Weighing units:

Can be switched to e.g. nonmetric units. See balance model. Please refer to KERN's website for more details



## Weighing with tolerance range:

(Checkweighing) Upper and lower limiting can be programmed individually, e.g. for sorting and dosing. The process is supported by an audible or visual signal, see the relevant model



## Hold function:

(Animal weighing program) When the weighing conditions are unstable, a stable weight is calculated as an average value



## Protection against dust and water splashes IPxx:

The type of protection is shown in the pictogram. For details see page 53



## Suspended weighing:

Load support with hook on the underside of the balance



## Battery operation:

Ready for battery operation. The battery type is specified for each device



## Rechargeable battery pack:

Rechargeable set



## Universal plug-in power supply:

with universal input and optional input socket adapters for  
A) EU, CH, GB  
B) EU, CH, GB, USA  
C) EU, CH, GB, USA, AUS



## Plug-in power supply:

230V/50Hz in standard version for EU, CH. On request GB, USA or AUS version available



## Integrated power supply unit:

Integrated in balance. 230V/50Hz standard EU. More standards e.g. GB, USA or AUS on request



## Weighing principle: Strain gauges

Electrical resistor on an elastic deforming body



## Weighing principle: Tuning fork

A resonating body is electromagnetically excited, causing it to oscillate



## Weighing principle: Electromagnetic force compensation

Coil inside a permanent magnet. For the most accurate weighings



## Weighing principle: Single cell technology:

Advanced version of the force compensation principle with the highest level of precision



## Verification possible:

The time required for verification is specified in the pictogram



## DAKkS calibration possible (DKD):

The time required for DAKkS calibration is shown in days in the pictogram



## Factory calibration (ISO):

The time required for Factory calibration is shown in days in the pictogram



## Package shipment:

The time required for internal shipping preparations is shown in days in the pictogram



## Pallet shipment:

The time required for internal shipping preparations is shown in days in the pictogram



# KERN – Measuring technology and testing services from a single source



**Balances & Test service catalogue**

Provides a complete overview of the KERN line of balances, test weights, and services such as verification, calibration, etc.



**Medical scales catalogue**

Complete line of medical scales, from infant scales to patient scales, chair scales and adiposity scales, as well as hand grip dynamometers, chemist's balances and veterinary scales.



**Microscopes & refractometers catalogue**

Extensive range in the area of optical instruments, such as, biological microscopes, stereo microscopes, metallurgical microscopes, polarisation microscopes as well as analogue and digital refractometers.



**SAUTER measuring equipment catalogue**

Test instruments for industry and commerce, such as force, coating thickness, material thickness and calibration service.



**DAkkS calibration service brochure**

Detailed information on topics pertaining to the calibration and verification of balances, test weights, and force measuring devices.

## Your advantages

### fast

- 24 hours delivery service for products in stock – ordered today, on its way tomorrow
- Sales & service hotline available from 8:00 am to 6:00 pm

### reliable

- Up to 3 years warranty
- Precision in weighing technology for more than 175 years

### competent

- DAkkS accreditation DIN EN ISO/IEC 17025
- Certified QM system DIN EN ISO 9001
- Authorisation for initial verification by the manufacturer 2014/31/EU
- Medical certifications DIN EN ISO 13485 and 93/42/EWG

### versatile

- One-stop shopping: from pocket balances through to 12 t crane balance – everything from one supplier
- Find the product you want at lightning speed with the “Balance Quick-Finder” at [www.kern-sohn.com](http://www.kern-sohn.com)



**Order hotline**  
+49 7433 9933-0



**Service hotline**  
+49 7433 9933-199



**Calibration hotline**  
+49 7433 9933-196



**Our team of consultants will assist you**  
from Monday to Friday  
from 8:00 am to 6:00 pm



**Online Shop**  
[www.kern-sohn.com](http://www.kern-sohn.com)



**E-mail order**  
[info@kern-sohn.com](mailto:info@kern-sohn.com)



**Fax order**  
+49 7433 9933-149



**[www.kern-sohn.com](http://www.kern-sohn.com)**  
Information on current product availability, product data sheets, user instructions, useful knowledge, technical glossary, images and much for you to download, practical topic areas, which will guide you to the right product in your industry as well as a clever test weight and balance search engine.

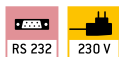
# Accessories



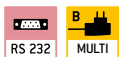
## Printers



STANDARD



STANDARD



STANDARD



### Important note for printer orders:

Please state your balance model when ordering, so that the printer can be preconfigured in the factory to suit your balance.

### Matrix needle printer KERN 911-013

For printing weighing results on normal paper, which is ideal for long-term archiving.

### Matrix needle printer KERN YKN-01

For printing weighing results on normal paper, which is ideal for long-term archiving.

### Thermal printer KERN YKB-01N

For printing weighing results, recipes, quantities etc. or for GLP record keeping of balance adjustment with date and time print. GLP/GMP compliant print form available as standard. Language versions: DE, EN, FR.

#### Technical data

- Needle print
- Speed: 1,8 line/s
- Max. 40 characters per line
- Width of the paper strip: 57 mm wide
- Operation via mains adapter 230 V/50 Hz (standard EU), as standard
- Dimensions housing: W×D×H 100×180×106 mm
- Not suitable for KERN PNS/PNJ, PES/PEJ ranges
- Interface cable not included with delivery, see page 166

Price printer without interface cable,  
KERN 911-013

#### Technical data

- Needle print
- Speed: 1 line/s
- Max. 16 characters per line
- Width of the paper strip: 44 mm wide
- Operation via mains adapter 230 V/50 Hz (standard EU/GB/USA), as standard
- Dimensions housing: W×D×H 158×106×40 mm
- Interface cable not included with delivery, see page 166

Price printer without interface cable,  
KERN YKN-01

#### Technical data

- Thermal print
- Speed: 0,75 lines/s
- Max. 40 characters per line
- Width of the paper strip: 112 mm wide
- Operation via mains adapter 230 V/50 Hz (standard EU/GB/USA), as standard
- Dimensions housing: W×D×H 165×140×50 mm
- Interface cable not included with delivery, see page 166

Price printer without interface cable,  
KERN YKB-01N

#### Accessories

- Paper rolls (10 pcs.), KERN 911-013-010
- Universal mains adapter, standard EU/GB/US, KERN ABS-A01

#### Accessories

- Paper rolls (5 pcs.), KERN YKN-A01

#### Accessories

- Paper rolls (10 pcs.), KERN YKB-A10

#### Individual header data:

For printers **KERN 911-013, YKN-01, YKB-01N and YKE-01 (in combination with YKI-02)** the free software **KERN SHM-01** (see [www.kern-sohn.com](http://www.kern-sohn.com)) can be used to print 4 header lines on the printout (see marking on balance). Compatible models: KERN 440, DE, FCB, FKB-A, PCB, PCD.



STANDARD



STANDARD



**Important note for printer orders:**

Please state your balance model when ordering, so that the printer can be preconfigured in the factory to suit your balance.

**Thermal statistics printer  
KERN YKS-01**

For printing weighing results, recipes etc. or for GLP record keeping of weighing data with date and time print. Numerator; with statistical functions such as count and total of all measurements, minimum and maximum values of the main unit, range, average value, standard deviation, available units: mg, g, kg, pcs. Language versions: DE, EN, FR.

**Technical data**

- Thermal print
- Speed: 0,75 lines/s
- Max. 40 characters per line
- Width of the paper strip: 112 mm wide
- Operation via mains adapter 230 V/50 Hz (standard EU/GB/USA), as standard
- Dimensions housing: W×D×H 165×140×50 mm
- Interface cable not included with delivery, see page 166
- Note: Please order the matching paper roll with it, see accessories
- Not suitable for KERN EWJ, PFB-M ranges as well as KERN moisture analysers and counting scales

Price printer without interface cable, KERN YKS-01

**Thermal label printer  
KERN YKE-01**

Affordable universal label printer to print out weighing results on thermal labels. ASCII-capable. Comfortable Auto-Forward function for automatic jump from label to label (only with KERN standard labels).

**Technical data**

- Thermal print
- Speed: 22 mm/s
- Max. 82 characters per line
- Width of the paper strip:  
YKE-A02: 78 mm  
YKE-A03: 112 mm
- Operation via mains adapter 230 V/50 Hz (standard EU/GB/USA), as standard
- Dimensions housing: W×D×H 150×155×65 mm
- Interface cable not included with delivery, see page 166
- Note: Please order the matching label roll with it, see accessories
- Not suitable for KERN BFS, CCS, CFS, DAB, DBS, DLB, IFS, KFS-TM, RPB ranges, counting scales

Price printer without interface cable, KERN YKE-01

**Accessories**

- Paper rolls (10 pcs.), KERN YKB-A10

**Accessories**

- Paper roll (1 pc.), Dimensions labels:  
W×D 73×61 mm, 100 labels,  
KERN YKE-A02  
W×D 105×48 mm, 45 labels,  
KERN YKE-A03

**Individual header data:**

For printers **KERN 911-013, YKN-01, YKB-01N and YKE-01 (in combination with YKI-02)** the free software **KERN SHM-01** (see [www.kern-sohn.com](http://www.kern-sohn.com)) can be used to print 4 header lines on the printout (see marking on balance). Compatible models: KERN 440, DE, FCB, FKB-A, PCB, PCD.



## Printers



STANDARD



STANDARD



### Important note for printer orders:

Please state your balance model when ordering, so that the printer can be preconfigured in the factory to suit your balance.

### Dot matrix printer KERN YKG-01

High-quality dot matrix printer

Flexible and rapid dot matrix printer for retail, the catering trade and for restaurant kitchens. To print the weights on normal paper, which is ideal for long-term archiving. This model has an interchangeable interface and you will be impressed by how easy it is to replace the paper and ribbon

#### Technical data

- Needle print
- Speed: 4,7 line/s
- Max. 42 characters per line
- Supported paper widths:  
58 mm, 70 mm, 76 mm (roll)
- Operation via mains adapter 230 V/50 Hz standard EU, as standard
- Interfaces: RS-232, cash drawer connection, bidirectional parallel
- Interface cable not included with delivery, see page 166
- Dimensions housing  
B×T×H 160×248×139 mm
- Not suitable for KERN DAB, DBS, DLB, FKT, RFE ranges

Price printer without interface cable,  
KERN YKG-01

#### Accessories

- Paper rolls (5 pcs.), KERN YKG-A01

### Thermal printer KERN YKH-01

High-quality thermal printer – fast, robust, user-friendly

Robust, low-maintenance dot matrix printer for retail, the catering trade and for restaurant kitchens. Extremely compact and long-lasting. Thanks to the waterproof switch cover it is particularly suitable for use under tough, loud environmental conditions

#### Technical data

- Thermal print
- Speed: 2 line/s
- Max 64 characters per line
- Supported paper widths:  
58 mm, 80 mm (roll)
- Operation via mains adapter 230 V/50 Hz standard EU, as standard
- Interfaces: RS-232
- Interface cable not included with delivery, see page 166
- Dimensions housing  
B×T×H 140×199×146 mm
- Not suitable for KERN DAB, DBS, DLB, FKT, RFE ranges

Price printer without interface cable,  
KERN YKH-01

#### Accessories

- Paper rolls (5 pcs.), KERN YKH-A01

#### Individual header data:

For printers **KERN 911-013, YKN-01, YKB-01N and YKE-01 (in combination with YKI-02)** the free software **KERN SHM-01** (see [www.kern-sohn.com](http://www.kern-sohn.com)) can be used to print 4 header lines on the printout (see marking on balance). Compatible models: KERN 440, DE, FCB, FKB-A, PCB, PCD.

**Interface cable for RS-232**

For direct connection to a printer or PC, cable length approx. 1.5 m.  
The interface parameters can be set using the balance keypad.

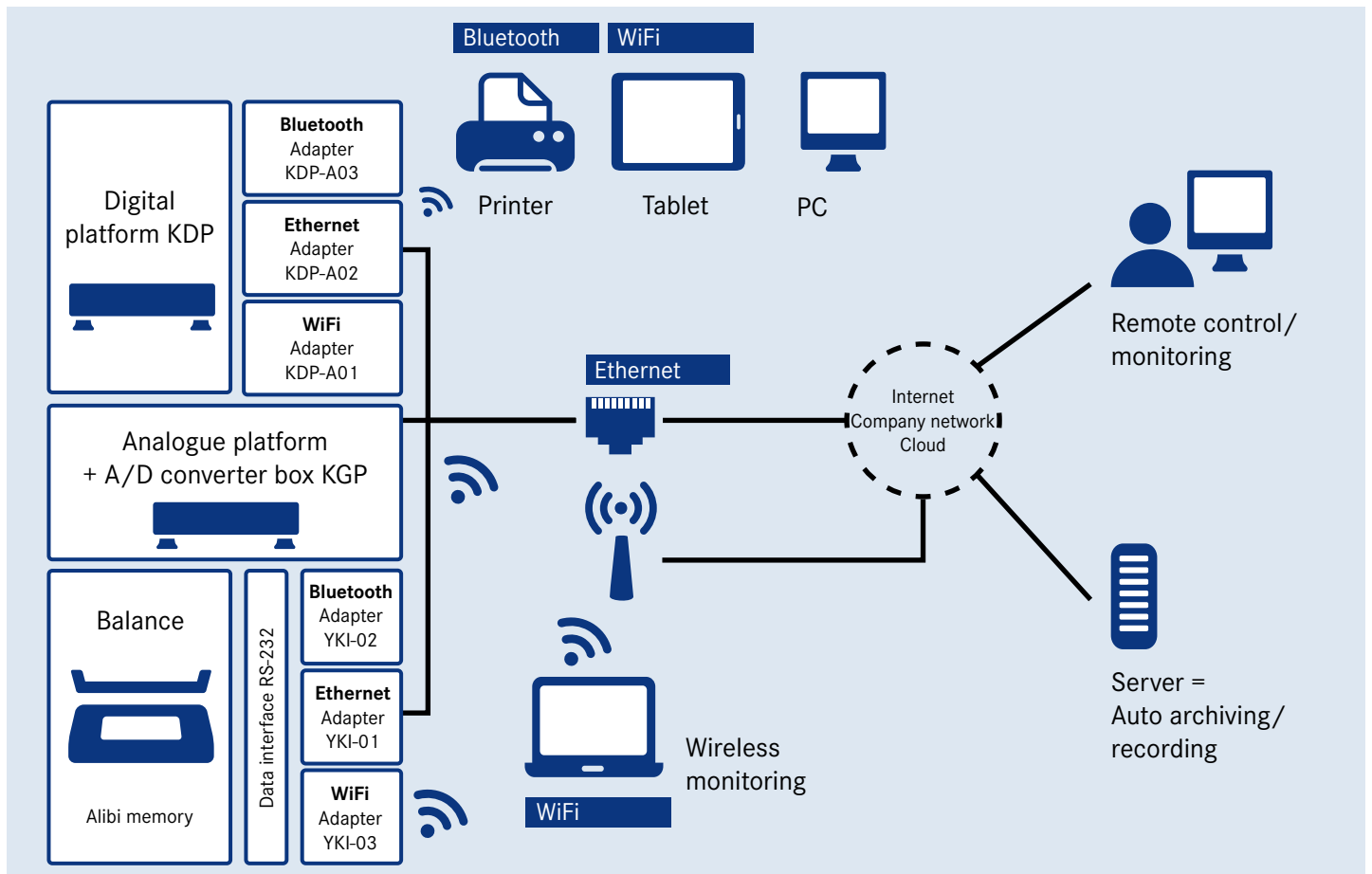


**Tip**

The interface cable is **free of charge** if you purchase balance, printer or Ethernet-/WiFi-/Bluetooth adapter together.

Printer, ...	PC, YKI-01/-02/-03 KERN	911-013, YKB-01N, YKN-01 KERN	YKE-01 KERN	YKG-01, YKH-01 KERN	YKS-01 KERN	
<b>Balance</b>						
440, 572, 573, ALJ-AM, ALS-A, ALT-B, CDS, CKE, DE-D, DS, EMB-V, FCB, FKA, FKB, FK, FKB-A, IKT, KB, PCB, PCD, PLJ-A, PLJ-F, PLS-A, PLS-F, PLE, PLT, KDP				<b>572-926</b>		
BAN, BKN, BXS, IXS, KXS-TM, SXS				<b>KXS-A04 (Factory Option)</b>		
EOC, IOC, BID, KIB-T, KIB-TM				<b>EOC-A12</b>		
YKV-01, KGP	<b>572-926</b>			-		
ABJ-NM, ABS-N				<b>ACS-A01</b>		
BFA, BFB, BFN (until year of construction 2019), GAB-N, GAB-P, GAT, IFB, KFB-TM, KFN-TM, NFB, NFN (until year of construction 2019) PFB, SFB, UFA, UFB, UFC, UFN				<b>CFS-A01</b>		
BFS, CPB, EWJ, KFS-TM, IFT, PFB, PFB-M				<b>CFS-A01</b>		-
CFS, CCS, KFS-TM, IFS (from year of production 2015)	-	<b>CFS-A01</b>	-	-	-	-
ABT-NM, PBJ, PBS				<b>770-926</b>		
DBS, DLB	<b>572-926</b>			-	-	-
DAB	<b>MLB-A05</b>		<b>MLB-A05</b>	-	<b>MLB-A05</b>	
ABP, KFS-T				<b>MLB-A05</b>		-
ADB, ADJ, ACS, ACJ, PNS/PNJ				<b>MLB-A05</b>		
HFT				<b>KFF-A01</b>		
EG-N, EW-N				<b>474-926</b>		
PES/PEJ (Interface cable for printer YKB-01: MLB-A05)						
CCA				<b>CCA-A01</b>		
RFE, RPB (not compatible with YKN-01)	-	<b>CFS-A01</b>	-	<b>CFS-A01</b>	-	-

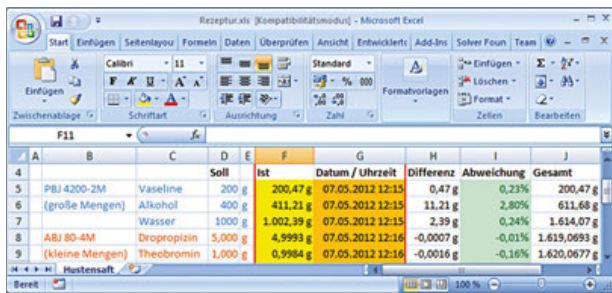
**With products from KERN you are ready to face the challenges of Industry 4.0**



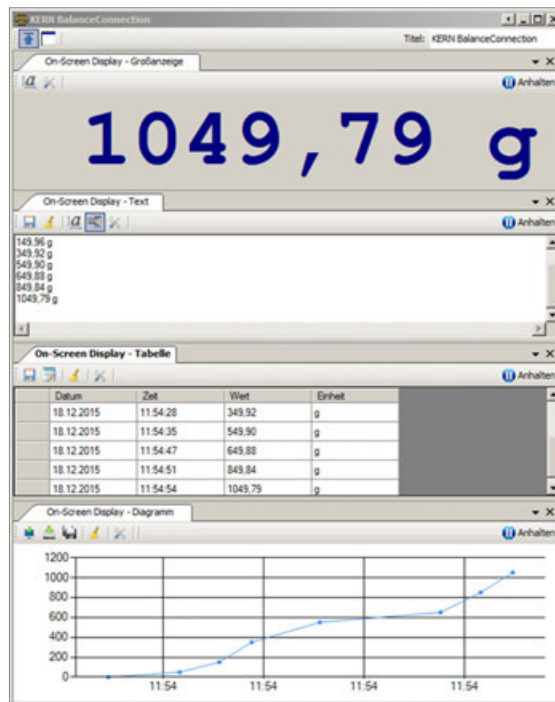
We will help to combine industrial production with the latest information and communication technology, with the aim of improving quality, reducing costs and using time and resources more efficiently so that you are able to react to future requirements in a more flexible manner. You will benefit from our uniform data protocol combined with our BalanceConnection 4.0 data software, for details please see page 167/168.



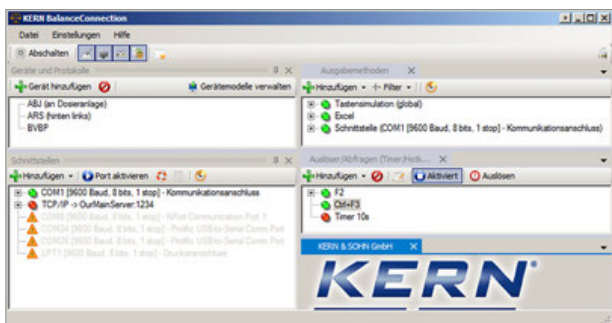
**KERN Software BalanceConnection SCD-4.0**



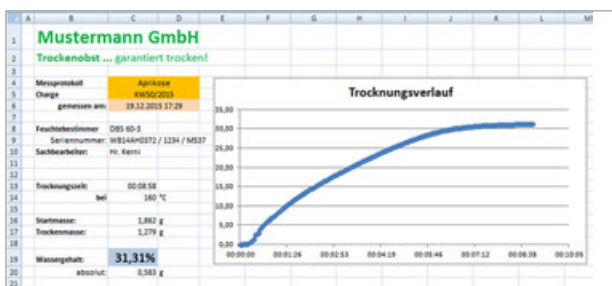
Easy transfer and editing of measuring results e.g. in Microsoft® Excel



Different on-screen displays with export function



Full overview of devices, outputs, queries, interfaces, etc. shown on the output window immediately.



Measurement report with line chart showing a moisture analysis

**Tip**

Do you have any questions? The team from our Industry 4.0 centre of expertise will be happy to help: e-mail: [ITsupport@kern-sohn.com](mailto:ITsupport@kern-sohn.com) Or download a free demo version of the BalanceConnection software: <http://balanceconnection.kern-sohn.com/demo>

**Flexible recording or transfer of measurements, particularly to Microsoft® Excel or Access**

**Features**

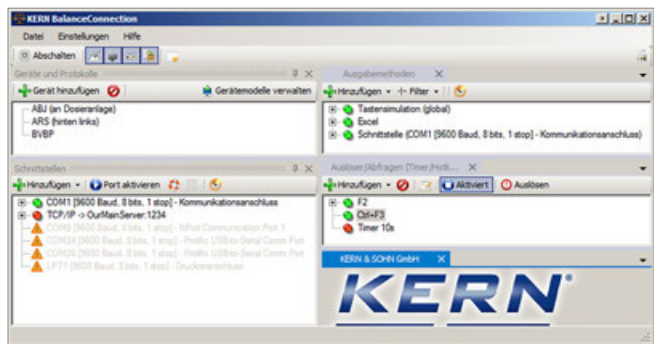
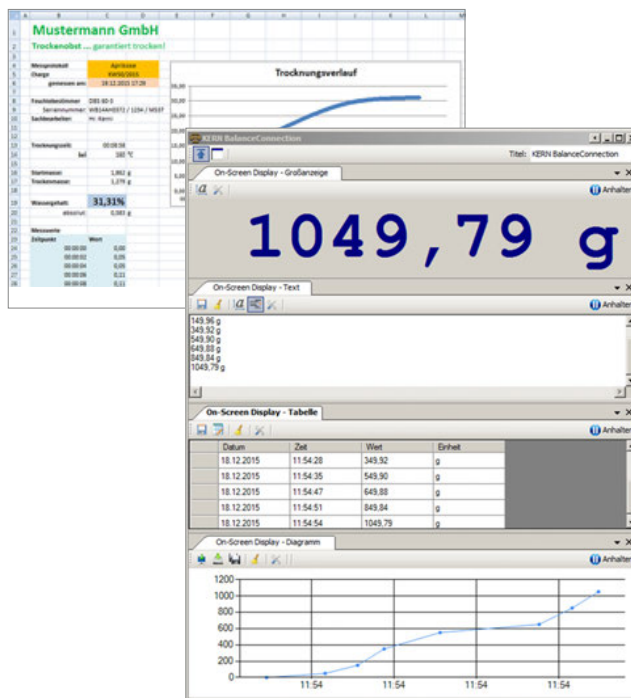
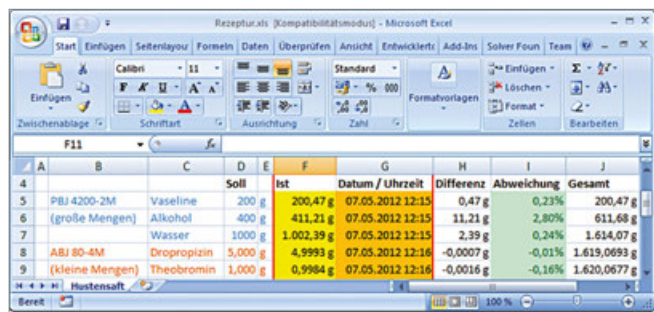
- For operating systems Windows XP, Vista, 7, 8, 8.1, 10
- Supports balances measuring devices with RS 232, RS 485, Bluetooth, LAN or WiFi network (TCP/UDP/IP)
- Highly flexible formatting of the output (any order, formatting and rounding), particularly recording of date and time for every value transferred, if required
- Any number of devices/interfaces can be connected, as well as simultaneous and synchronised recording of several balances
- Key-activated or time-controlled interrogation of measurements or trigger of device functions, also for continuous recording
- The interface protocols for KERN balances are already predefined (standard configuration)

- Compatible interface cable included when you order a KERN balance at the same time
- Many different transfer and recording options:
  - Microsoft® Excel/Access/Word in the foreground or background
  - Other Windows applications (through key simulation), e.g. shipping software or ERP system (SAP, Sage, etc.)
  - File recording (e.g. as text or CSV file)
  - Print out on text or label printer
  - Screen output such as large display, line chart (drying curve for moisture analyser), histogram, etc.

**Benefits**

- Typing errors during e.g. manual transfer are avoided
- Automatic recording, e.g. for long-term tests
- GLP-compliant lab software
- Can be used across different branches and applications
- Also available as a cost-optimised package with 5 licenses, **you save more than 30 %!**
- Also available immediately as a download license
- Scope of supplies: 1 CD, 1 license, KERN SCD-4.0
- Scope of supplies: 1 CD, 5 licenses, KERN SCD-4.0-S05
- Scope of supplies: Download link for 1 license, KERN SCD-4.0-DL

**KERN Software BalanceConnection SCD-4.0 Pro**



Professional and highly flexible recording or transmission of measured values, in particular also to Microsoft® Excel or Access

**Features**

- For operating systems Windows XP, Vista, 7, 8, 8.1, 10
- Supports balances measuring devices with RS 232, RS 485, Bluetooth, LAN or WiFi network (TCP/UDP/IP)
- Highly flexible formatting of the output (any order, formatting and rounding), particularly recording of date and time for every value transferred, if required
- Any number of devices/interfaces can be connected, as well as simultaneous and synchronised recording of several balances
- Key-activated or time-controlled interrogation of measurements or trigger of device functions, also for continuous recording
- The interface protocols for KERN balances are already predefined (standard configuration)
- Compatible interface cable included when you order a KERN balance at the same time
- Many different transfer and recording options:
  - Microsoft® Excel/Access/Word in the foreground or background
  - Other Windows applications (through key simulation), e.g. shipping software or ERP system (SAP, Sage, etc.)
  - File recording (e.g. as text or CSV file)
  - Print out on text or label printer
  - Screen output such as large display, line chart (drying curve for moisture analyser), histogram, etc.

**Additional features of the BalanceConnection PRO version:**

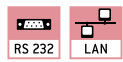
- ODBC/SQL databases such as SQL Server or MySQL
- Transfer to HTTP Webservices/Web forms
- Histogram
- Enables the connection of medical balances to practice EDP systems using the device data transfer protocol (GDT) and also the HL7 protocol
- Implementation of programs/scripts using freely-definable command lines
- Command sequences
- Defining the conditions for specific events and the reaction to these events
- Filter for stability recognition (configurable value storage)
- Central configuration repository, e.g. on the network
- On-screen displays with configurable user interface for flexible balance operation

**Benefits**

- Ideal software where weighing data which has been collected needs to be transferred to a Windows PC
- Particularly suitable for professional integration of weighing systems into existing networks where there is a high demand for automated data transfer and further processing, for integration of databases
- Automatic recording, e.g. for long-term tests
- GLP-compliant lab software
- Can be used across different branches and applications
- Also available as a cost-optimised package with 5 licenses, **you save more than 30 %!**
- Also available immediately as a download license
- Scope of supplies: 1 CD, 1 License KERN SCD-4.0-PRO
- Scope of supplies: 1 CD, 5 Licenses KERN SCD-4.0-PRO505
- Scope of supplies: Download link for 1 License, KERN SCD-4.0-PRO-DL



STANDARD



### RS-232/Ethernet adapter KERN YKI-01

Adapter to connect balances, force measuring devices etc. with an RS-232 interface 2 to an IP-based Ethernet network 1. The adapter allows direct integration of measuring devices into most company networks, with automatic configuration using DHCP or statistical IP allocation. You can access the current measuring data at any time from within the whole network, without having to use additional cables. The adapter supports a wide range of configurational options using the enclosed administration software or by the web interface. The driver delivered with the goods allows you to access the measuring device with existing, non-network-compatible applications using a virtual COM port. Compatible with KERN BalanceConnection software. DIN track mount 3 or free-standing.

Scope of delivery: RS-232 Ethernet adapter with 1x Port RS-232 1, mains adapter 4, CD (driver, software, operating instructions), adhesive feet, (interface cable see page 167),

KERN YKI-01



STANDARD



### RS-232/WiFi adapter KERN YKI-03

High-quality adapter for the wireless connection of balances, force measuring devices etc. with RS-232 interface to WiFi-enabled devices, such as tablets, laptops, Smartphones etc. In this way, where there is a physical separation or a large distance between the devices, the weighing data from one or several balances can be easily transferred without cable to a WiFi device or a network (relevant software on the WiFi device needed, not included in delivery). The adapter allows direct integration of measurement devices into most company networks, with automatic configuration using DHCP or statistical IP allocation. You can access the current measuring data at any time from within the whole network, without having to use additional cables. The adapter supports a wide range of configurational options using the enclosed administration software or by the web interface. The driver delivered with the goods allows you to access the measurement device with existing, non-network-compatible applications using a virtual COM port. Compatible with KERN Software BalanceConnection.

The adapter also has an Ethernet interface for a wired connection to an IP-based Ethernet network 1. Thanks to the screw terminals 2, the power connection can be implemented individually using individual wires or using the robust, screw-in power connector 3. Large input voltage range from 12 V–48 V. Suitable for wall mounting and DIN track mount 4 or free-standing.

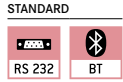
Scope of delivery: RS-232/WiFi adapter, mains adapter, network cable (1 m), driver CD, (interface cable see page 167),

KERN YKI-03



**Note:** To connect to your network, you will need information from your network administrator. We recommend discussing connecting your device into your network with the administrator before you place your order.

**Note:** If you order a KERN balance at the same time, then the interface cable is **free of charge** (please specify balance model).



## RS-232/Bluetooth adapter KERN YKI-02

Adapter for the wireless connection of balances, force measuring devices etc. with an RS-232 interface to Bluetooth devices, such as Bluetooth printers, tablets, laptops, Smartphones etc. In this way, where there is a physical separation or a large distance between the devices, the weighing data from one or several balances can be easily sent without cable and printed on a Bluetooth printer or transferred to a Bluetooth device (you would need the relevant software on the Bluetooth device, not included with the delivery). The compact adapter with its attractive design can usually be connected directly to the balance **1**, e.g. an additional interface cable would not be necessary. Bluetooth adapter will be powered by the balance (if compatible) or with the mains adapter which is supplied as standard **2**. Range up to 100 m outside, depending on obstacles, such as, walls, the sensitivity and type of antenna of the receiver. Intersections of sending and receiving lines using the DCE/DTE switch **3**. Compatible with KERN Software BalanceConnection.

Scope of delivery: RS-232/Bluetooth adapter, mains adapter (EU/UK/USA/AUS/CH) **2**, USB-A to Mini-USB-B cable **4**, gender changer **5**, driver CD, (interface cable see page 167),

KERN YKI-02



**Note:** To connect to your network, you will need information from your network administrator. We recommend discussing connecting your device into your network with the administrator before you place your order.

**Note:** If you order a KERN balance at the same time, then the interface cable is **free of charge** (please specify balance model).





**Large display  
KERN YKD-A02**

with superior display size, digit height 3" (76 mm). Luminescent, red LED display for easy reading of weight, even from a distance or under poor lighting conditions. 6 segments, mains connection as standard (230 V, EU/GB), connection using RS-232 data interface, dimensions WxDxH 541x55x180 mm.

Suitable for series IFB, BFB, NFB, UFA, UFB,

KERN YKD-A02



**Signal lamp  
KERN CFS-A03**

Signal lamp for visual support of weighing with tolerance range. Three-colour LED, red, green, yellow. Power supply via balance using RS-232. Total dimensions WxDxH 100x180x300 mm

Suitable for series BFB, BFN, BID, CKE, CPB-N, GAB-N, GAB-P, IFB, IFS, IOC, KFB-TM, KFN-TM, KIB-TM, NBB, NFB, NFN, SFB, UFA, UFB, UFC, UFN,

KERN CFS-A03



**Power supply adapter set  
KERN YKA-02**

from standard EU to GB/US/AUS/CH etc. Four pieces. Ideal for devices with Class II protection (not earthed). Ideal for Euro moulded plug,

KERN YKA-02



**2nd RS-232 data interface  
KERN CFS-A04**

separate Y cable, e.g. for simultaneous connection of a printer and a signal lamp.

Suitable for series BAN, BFB, CFS, CPB-N, GAB-N, GAB-P, IFB, KFB-TM, NFB, NFN, UFN, UFA, UFB, SFB,

KERN CFS-A04



**RS-232/USB adapter  
KERN AFH 12**

to connect peripheral devices with USB connection, fits on all balances and measuring instruments with RS-232 port.

Please order the appropriate RS-232 interface cable for your balance at the same time, see table on page 166

Scope of delivery: Converter cable, CD with driver,

KERN AFH 12



**Stand (tripodal)**  
**KERN YKP-01**

stable and robust, to elevate display device, stainless steel, height-adjustable, large three-legged adjustable foot, height of stand approx. 750–1000 mm, Factory Option.

Suitable for series BFA, BBB, BFN, BBN, KEN-TM, NFN, SFB (from weighing plate size W×D 500×400 mm), UFN,

KERN YKP-01



**Stand (tripodal)**  
**KERN YKP-02**

stable and robust, to elevate display device, stainless steel, height-adjustable, large three-legged adjustable foot, height of stand approx. 750–1000 mm, Factory Option.

Suitable for series BFB, BXS, BFS, BFA, BBB, BBN, BKN, IFS, IFB, KFE-TM, KXG-TM, KXS-TM, KEN-TM, NFB, NBB, SFE, UFA, UFB, UFC,

KERN YKP-02



**Protective dust cover**  
**KERN ABS-A08**

For protection from dust and light.

Suitable for all KERN analytical balances and precision balances with glass draught shield,

KERN ABS-A08



**Tare pan**  
**KERN RFS-A02**

Made of stainless steel, which makes cleaning easy and hygienic. Ideal for weighing loose screws, small parts as well as fruit, vegetables, cheese, etc.

- W×D×H 370×240×20 mm
- Net weight approx. 524 g

KERN RFS-A02



**Tare pan with pan beam**  
**KERN CH-A01N**

Made of stainless steel. Ideal for weighing loose small parts as well as fruit, vegetables etc. Max. load 30 kg. Removable tare pan which makes cleaning easy and hygienic.

- Suitable for models KERN CH 15K20, HCB 20K10, HCN 20K50IP, HDB-N, HDB-XL
- Dimensions: tare pan,  $\varnothing$ /H 160×40 mm (dim. outside), 240×40 mm (dim. inside)
  - Pan beam: W×D×H 290×240×300 mm 290×240×340 mm (incl. tare pan)
  - Total net weight approx. 500 g

KERN CH-A01N



**Universal density set**  
**KERN YDB-03**

Universal density set for precise and convenient density determination of liquids and solids  $\leq/\geq 1$ . Suitable for all current KERN analytical balances.

Scope of delivery: Beaker ( $\varnothing$ ×H 84×113 mm), thermometer, sample holder, adapter, equalising weights, volume plummet (stainless steel, 20 g), universal submersible basket for solid bodies which float and sink. The wire of the submersible basket has a diameter of 0.5 mm and therefore complies with the requirements of DIN EN ISO 1183-1 (test methods for the determination of density of non-foamed plastics), KERN YDB-03

Optional:  
Density determination of the volume plummet, DAkkS calibration certificate with all data relating to the density and volume, KERN 962-335V

NEW



**Ioniser to neutralise electrostatic charge  
KERN YBI-01A**

Goods to be weighed which are non-conductive, such as plastic, china, glass, etc often carry electrostatic charge. The electromagnetic field which then occurs between the goods to be weighed and the balance can cause the weighing result to be distorted by up to a gramme. Therefore, when weighing in milligrammes or even smaller increments, we recommend neutralising the electrostatic charge with the KERN AC-Korona discharge ioniser. With feet supplied with the ioniser, it can be positioned conveniently next to the balance or you can manually direct it from all sides onto a particular item to be weighed.

- Discharge of ozone 0,05 ppm/h
- Total dimensions WxDxH  
115x100x60 mm (Adjustable foot retracted),  
115x110x80 mm (Adjustable foot folded out)
- Net weight approx. 0,31 kg
- Mains connection 100–240 V, 50/60 Hz,  
AC power supply, DC 12 V, 500 mA, output,

KERN YBI-01A



STANDARD  
2 DAYS

**Weighing table  
KERN YPS-03**

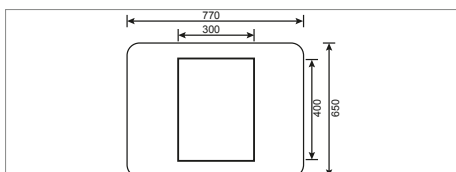
The KERN YPS-03 weighing table has been constructed to absorb vibrations and oscillations, which would otherwise distort the weighing result.

The YPS-03 weighing table consists of:

- a heavy, polished granite slab (24 kg) and is positioned on absorbing rubber components and is used as a surface on which to stand the analytical balance
- a work table, the work surface of which surrounds the slab and offers many storage options. The sturdy powder-coated steel frame has four height-adjustable feet, which can be used to accurately level the weighing table if the floor is at all uneven
- You can work in an ergonomic way at the weighing table whether you are in a standing or seated position. The inlet on the front of the table offers enough space for you to sit down and operate the scale without touching the weighing table.
- All surfaces are hygienic and easy to clean
- Suitable for all KERN analytical balances with total dimensions  $\leq W \times D$  300x400 mm
- Total dimensions WxDxH  
785x600x800 mm (Height adjustable)
- Dimensions granite slab, WxDxH  
300x400x80 mm
- Net weight approx. 46 kg

Ready for shipping in 2 working days. Dispatch complete on pallet, simple self-assembly. Please ask for dimensions, gross weight, shipping costs,

KERN YPS-03



**Anti-vibration granite plates  
KERN YPS-04, -05, -06**

- The KERN YPS-04, -05, -06 anti-vibration granite plates are designed to dampen shocks and vibrations that would otherwise distort the weighing results of high precision Laboratory Scales and analytical balances. Also ideal for vibration-free microscope set-up
- The anti-vibration granite plate is made of polished granite, which is supported through absorbent rubber elements
- The anti-vibration granite plate can be used ergonomically while standing or sitting comfortably
- Compact size, practical for small spaces
- All surfaces are hygienic and easy to clean
- Suitable for all KERN analytical balances, precision balances and microscopes with the corresponding dimensions
- Overall dimensions, WxDxH  
YPS-04: 400x450x60 mm  
YPS-05: 565x450x60 mm  
YPS-06: individual dimensions, according to your requirements
- Net weight approx.  
YPS-04: 30 kg  
YPS-05: 35 kg  
YPS-06: on request

Ready for shipping in 2 working days. Dispatch complete on pallet. Please ask for dimensions, gross weight, shipping costs,

KERN YPS-04  
KERN YPS-05  
KERN YPS-06, on request



STANDARD



### Roller conveyor KERN YRO-01/ YRO-02/ YRO-03

Through the smooth-running KERN roller conveyor attachments, KERN YRO, you can convert your platform scale into a robust measuring system for rapid and flexible weight determination in conveyor applications

Especially suitable for use in production and dispatch lines, where time means money. The goods or packages can either be weighed as they pass over the balance or, at fixed stations, heavy goods can easily be pushed onto the scale thanks to the roller conveyor and moved onto the connected roller conveyor

- Simply connect the roller conveyor attachment to a platform (e.g. KERN IFB, IFS, IXS, KFP, KXP, SXS) – done!
- Robust aluminium profile frame. The modular design means that you can easily disassemble it for cleaning or to replace individual components
- Smooth-running, hot-dip galvanised steel rollers with ball bearings
- Conductive rollers
- Suitable for use in dry environments
- Roller distance approx. 30 mm
- Direction of movement is lengthways

- Scope of delivery: 1 roller conveyor attachment (without scale)
- We are happy to adapt the roller conveyor to your scale, adjust the preload or switch-on tolerance, etc. Please ask for your individual offer, your personal KERN contact person will be happy to help you

Model	Total dimensions W×D×H	Suitable for platforms with weighing plate sizes W×D	Total net weight approx.
KERN	mm	mm	kg
YRO-01	405×305×130	400×300	6
YRO-02	505×405×130	500×400	9
YRO-03	655×505×130	650×500	12





# KERN & SOHN – The wide range of product champion that is situated in the Swabian Alb

KERN & SOHN GmbH  
Balances, Test weights, Microscopes,  
DAkkS calibration laboratory  
Ziegelei 1  
72336 Balingen  
Germany  
Tel. +49 7433 9933-0  
info@kern-sohn.com



Printed in Germany by KERN & SOHN GmbH · z-ob-en-kp-20221

## Discover the vast world of scales and measuring technology from KERN online: kern-sohn.com



Follow us also on our social media  
channels

