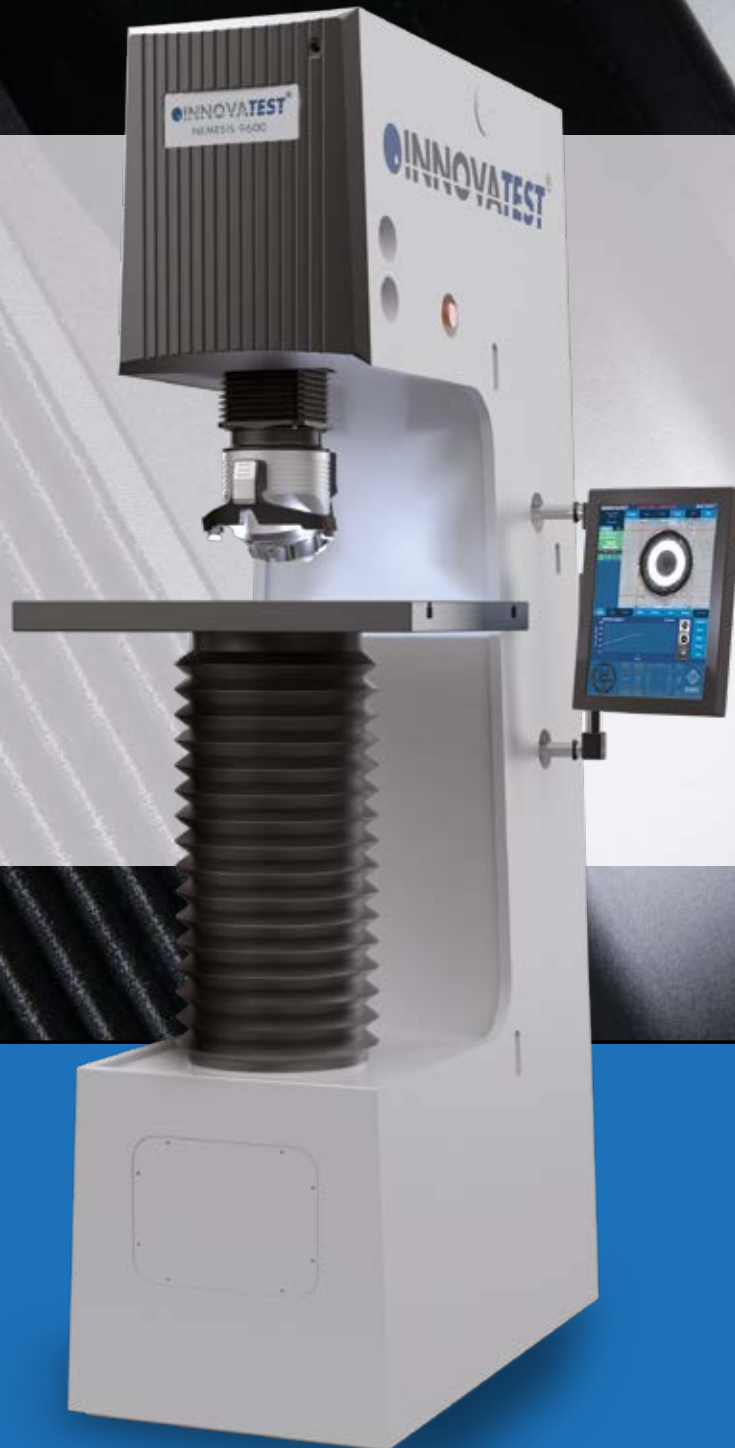


NEMESIS 9600

Universal Hardness Tester | Vickers, Knoop, Brinell, Rockwell

FLOOR TYPE



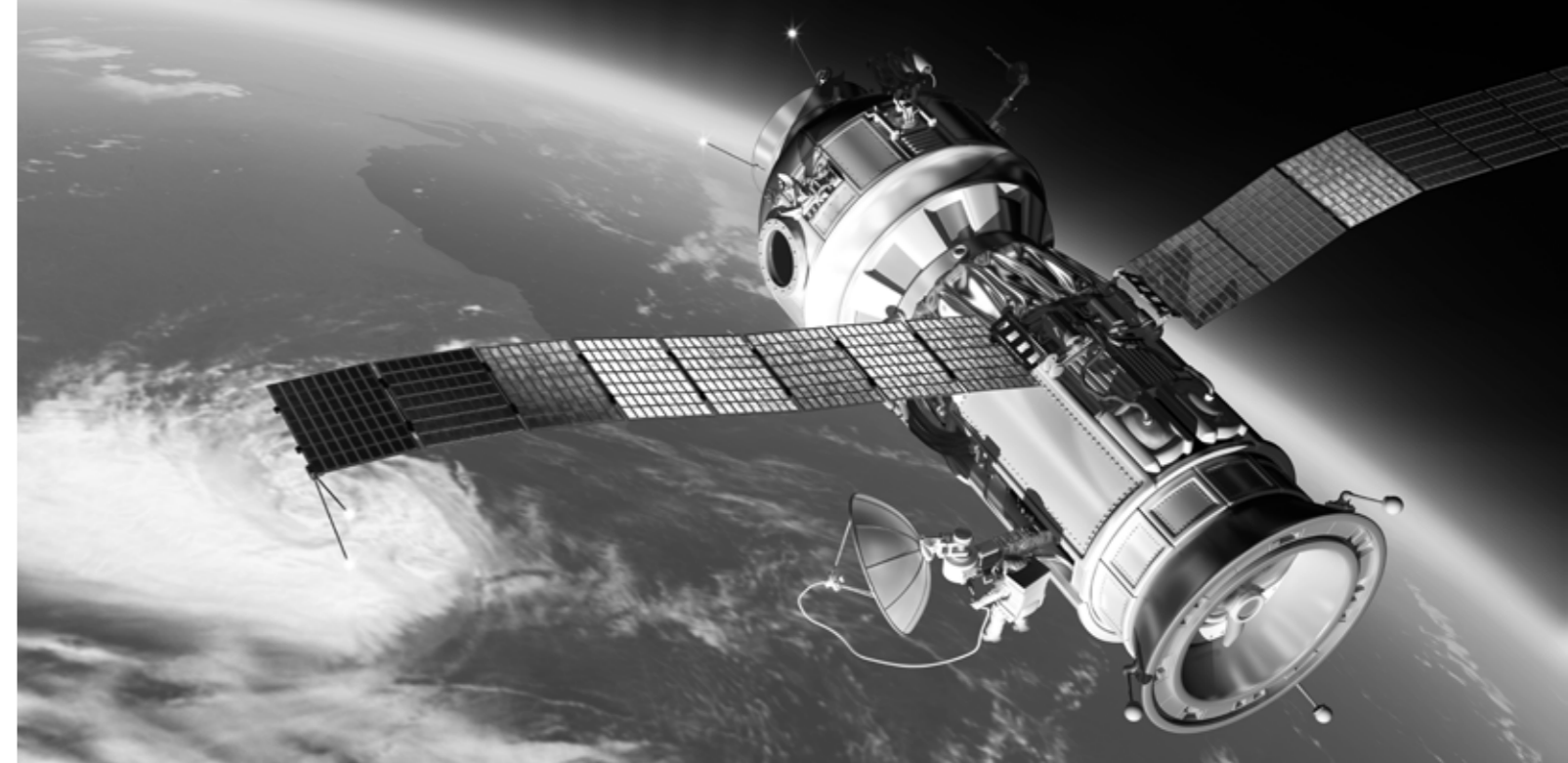
NEMESIS 9600

Truly Universal...

The NEMESIS 9600 is a heavy-duty floor type universal hardness tester most suitable for harsh testing conditions of very large parts. This floor type frame reaches a height of 2.10 meters and offers a workspace of not less than 650mm height and a throat depth of 400mm from spindle center.

The heavy duty motorized spindle with over 1000 kg lifting capacity allows to position the test piece on the required working height. Rockwell, Vickers and Brinell, but also pure depth test methods such as HVT and HBT are part of the standard test procedures of the NEMESIS 9600.

The second Z-axis has a 150mm stroke descending test head which gives unique flexibility.



A FORCE RANGE, THAT HASN'T BEEN DONE BEFORE!

1gf	500gf	250kgf	NEMESIS 9601	3000kgf
1gf	200gf	250kgf	NEMESIS 9602	3000kgf
1gf	5kgf		NEMESIS 9603	3000kgf
1gf	200gf		NEMESIS 9604	3000kgf

= Extended range available starting from 50gf

HIGHLIGHTS

- 1 Load Cell, Closed Loop force application system, error <0,25%
- 2 Descending test head, with fixed work piece position
- 3 8-position turret with standard built-in laser positioning system
- 4 3 indenter positions, 3 LWD objectives installed (included)
- 5 18 megapixels, 4K+, full color, integrated camera system
- 6 Full XY-stage overview camera, optical zoom system, with variable field of view
- 7 TTL power LED, Dual source power LED bank, stage illumination
- 8 Z-axis with ball bearing spindle
- 9 Integrated high performance system controller, i7 processor, 120GB mSSD storage
- 10 Industrial 15" touch screen, option for second screen 15" to 55" or projector
- 11 Top-class replaceable body parts, shock proof ABS covers

HARDNESS SCALES



VICKERS 200gf - 150kgf
also HVD (HVT)



KNOOP 200gf - 5kgf



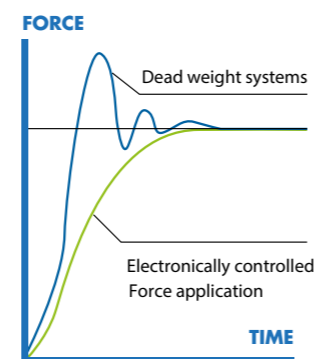
BRINELL 1kgf - 3000kgf
also HBD (HBT)



ROCKWELL 3kgf - 150kgf

* For more details on the scales see page 26

TECHNOLOGY OF TODAY



Load cell, closed loop,
force feedback system



Crossing all boundaries...

1 8 POSITION PRECISION TURRET & LASER POSITIONING

The 8 position turret is supplied as a standard feature on the NEMESIS 9600 and allows to install indenters for Rockwell, Vickers, Knoop and Brinell testing. With the standard built-in Class 2 Laser positioning has never been so easy.

2 STAGE OVERVIEW CAMERA (OPTIONAL)

Create magnified sample overview with the optional integrated auto focus optical & digital zoom, overview camera. The field of view of this sophisticated full color camera system does not limit you to one field of view, but gives an extensive zoom range without the need to use time-consuming scan and stitch functions.

Once the viewing area needs to be larger than the zoom range, scanning and stitching can be selected to create full stage overview. Click and go is one of the standard testing features of the overview camera. Just click randomly on designated area's and push "start". All tests run automatically. The pattern video overlay function eases positioning of multiple test rows or patterns across the specimen. The pattern video overlay scales automatically with every magnification, stepless, while the zoom camera decreases or enlarges the overview.

3 DYNAMIC Z-AXIS CONTROL & COLLISION DETECTION

A high end ball bearing Z-axis spindle is one of the very unique functions. Z-axis displacement at an accuracy of micron's supports ultra-fast auto focus. Z-axis controls are nearly limitless; CNC as a result from a test program, by touch screen indicators, by the scroll wheel of the mouse and by fast up and down buttons. Positioning has never been this easy. To avoid any collision between the work piece and the turret, the Z-axis is controlled by a flawless collision detection and Z-axis retraction system. So neither the tester nor the workpiece are exposed to any damage.

4 HIGH SPEED CNC MOTORIZED XY-STAGE (OPTIONAL)

Save time and improve efficiency with one of the high speed, highly accurate motorized XY-stages. Available in variable sizes from standard, to large and extra-large. Enable automated sequencing of multiple samples. The ultra-high accuracy and repeatability guarantee precise positioning of indents and allow re-evaluation of any measurement points in batch or single view. Repeatability within 3 micron.



CONNECTIVITY, CONTROL & QUALITY ASSURANCE

The system has bi-directional in and output channels. Tester control can be conducted remotely and supports for instance, but not limited to robotic systems. Test values can be exported as single values or as string of data to be handled by 3rd party quality evaluation software.

Q-DAS certified. (Optional)

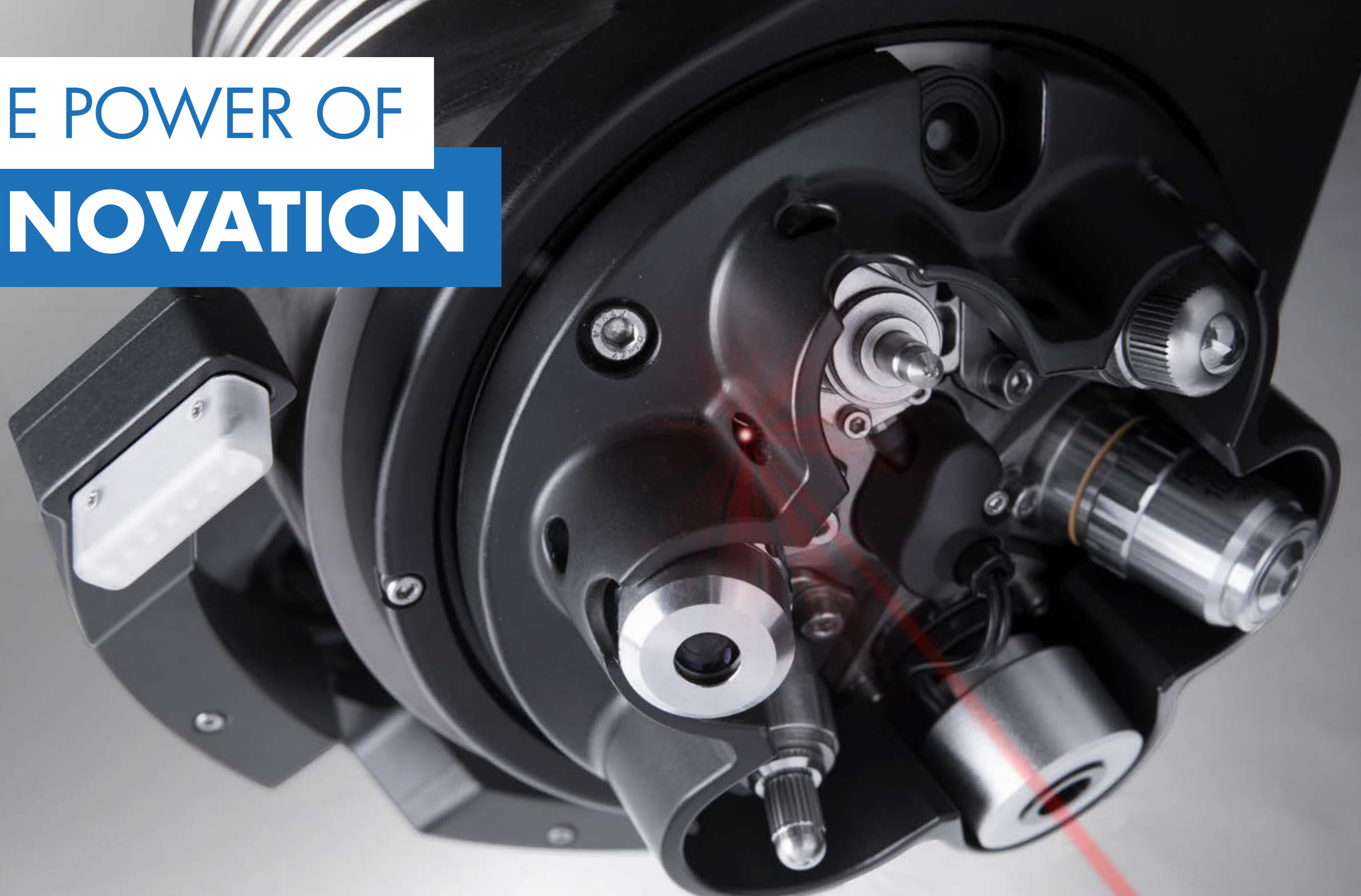
5 15" HD TOUCH SCREEN OPERATOR INTERFACE

All machine control and workflow process can easily be operated from the 15" industrial capacitive touch screen. At choice a second 15" or larger screen can be connected.

6 SHOCK RESISTANT ABS MACHINE COVERS

The tester is fitted with a high-end external shell structure. All in a unique design with high-end aluminium panels. The shock proof and damage resistant ABS machine covers can withstand the harshest environment.

THE POWER OF INNOVATION



It's not about ideas, it's about making ideas happen...

Sophisticated and unique, 100% linear, vertical force actuator. Cutting edge technology, high speed turret with integrated multi load cell signal handling, stage overview camera at indenter position, power LED TTL illumination, positioning laser and an advanced collision detection and test head retraction system.

TURRET TECHNOLOGY

The high speed 8 position turret or revolver is the main center of performance of the NEMESIS 9600 series.

Designed for test forces up to 3000kgf in the NEXUS 8100 configuration, this masterpiece of mechanics and optics also incorporates load cells and electronics to handle all force application and force system feedback.

It's also the home base of the high definition overview camera equipped with optical zoom system and autofocus, at indenter position. The technology of this camera provides a variable field of view of the overview, not seen in the industry before. Time consuming image stitching is therefore not required for most common samples.



1 POWER LED BANKS

On the side of the turret, two power LED banks, mounted at a distance, provide cross surface illumination, assuring that the overview system has excellent viewing performance under all circumstances and on all materials.

2 3 OBJECTIVES

The three long working distance objectives mounted on the turret as a standard accessory, channel images to the built in 18 megapixels, full color, 4k+ camera system. The result is a bright, sparkling image of your indent, the start of a successful precise automatic measurement function.

3 LASER POSITIONING SYSTEM

Another feature, not seen before in this class of instruments, is the standard, Class 2 laser positioning system. Position parts with great precision at the exact indent position. Provides operator comfort without limitations.



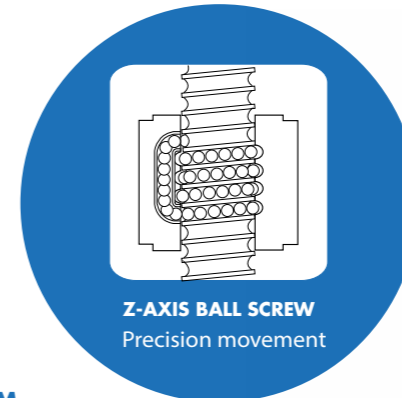
4 PROTECTION SYSTEM

Protecting the turret, load cells, optics and other parts, but also the workpiece against collisions caused by operator failure or program failure, the turret has a highly sensitive collision detection and retraction system. Broken indenters or damaged optics are simply history.

The system also recognizes unintended resistance that could be caused from hands or fingers and will retract the test head in any suspect situation instantly.

The turret also has a ridged protection parts for possible hits caused by positioning of the to be tested. The skirt mounted on the rotating center of the turret protects each individual turret position against accidental damage.

Vertical force actuator with position reading system



Z-AXIS BALL SCREW
Precision movement

MULTI LOAD CELL SYSTEM

To cover the wide range of test forces the low force models have three load cells installed. Each with its specific force range. Only in this way, high force accuracy and repeatability are always guaranteed.

POSITION READING SYSTEM

The force actuator with a stroke of 320 mm has a linear reading system (glass scale) manufactured by HEIDENHAIN Germany. This top quality system with ABS position reading, provides a constant loop of information on the position of the test head and communicates details of the position that are used for rapid autofocus. This system enables you to conduct comprehensive depth measurement methods such as HVD (HVT) and HBD (HBT) normally not available on Micro Vickers / Vickers hardness testing machines.

SERVO DRIVE SYSTEM

The actuator is driven by a high quality servo drive system. The system provides constant feedback on load, speed, resistance and other parameters that influence the operating process and tester integrity. At a central position in the force actuator, a ball bearing spindle translates the servo rotation to the operator desired direction or test cycle. Tester control and performance at the highest level.

SPINDLE

Highly accurate manual or motorized Z-axis (at choice).



2nd Z-Axis heavy duty servo drive lifts up to 1000kg

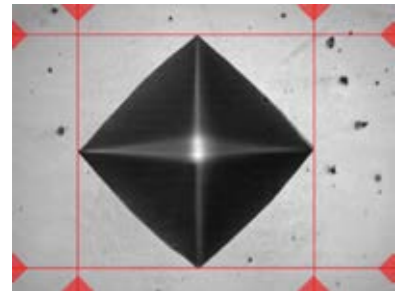
AUTOMATIC IMAGE EVALUATION



1

1 AUTO FOCUS

Fast & precise, observe how IMPRESSIONS™ finds focus from a large distance, as far as the travel of the Z-axis allows. Algorithms used for close distance autofocusing set new standards in AF speed.



2

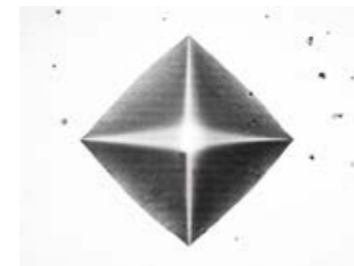
2 AUTOMATIC MEASUREMENT

Manual positioning of filar lines is no longer required. IMPRESSIONS™ refined measurement algorithms detect indents even on very poor or scratched surfaces and measure the relevant indent dimensions according to standards. Stay in control by switching to manual measure mode and have the option of adjusting measurements by touching the screen or using the mouse. Filar lines can be colored to give the best contrast against the specimen's surface. To assure that measurements meet relevant standards on symmetry, enable the automatic indent check. All hardness values can be converted to other scales according to ISO 18265, ISO 50150, ASTM E140.

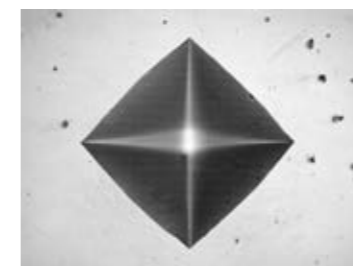
3 ILLUMINATION SETTINGS

IMPRESSIONS™ software automatic illumination system adapts to the correct illumination regardless of the sample surface quality, wherever on the sample, independent from material (steel, carbide, coated or ceramic). Contrast, Brightness and program, can be set automatically for each measurement or controlled manually. Sharpness can be stored with the pre-determined test

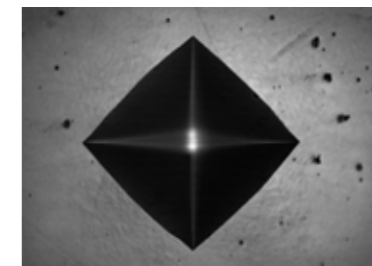
Too bright



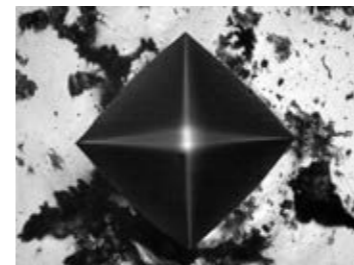
OK



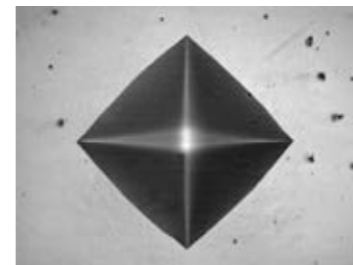
Too dark



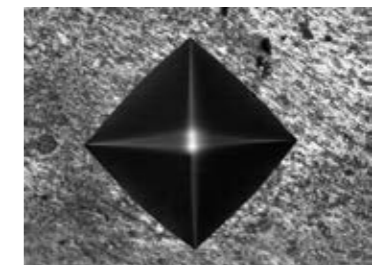
3



Irregular surface



Regular surface



Poor surface

4

4 REFINED IMAGE DETECTION

Complex, refined algorithms ensure reproducible measurements on different materials and even on scratched and damaged surfaces.

One accurate measurement is worth more than 1000 expert opinions...

Science fiction?... No, just reality ahead of schedule

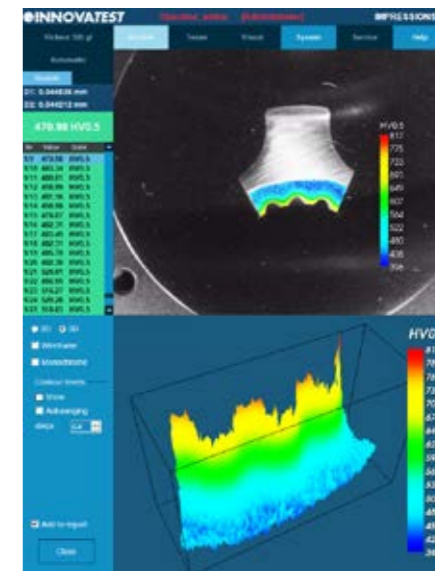
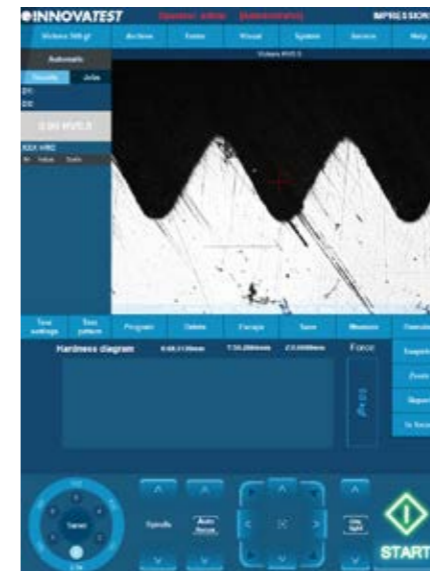
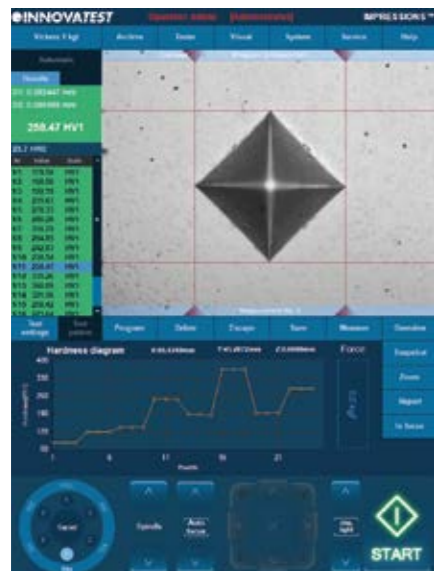
The Graphical User interface (GUI), contains industry preferred applications, and offers easy to learn, advanced workflow control. A simple test can be set up and conducted in about 3 seconds... IMPRESSIONS™ layout & functions will match not only your particular application requirements, but also meet the needs and preferences of your operators. A user level management system maximizes their comfort and efficiency.

The unique in the industry, 15" portrait mode, capacitive touch screen, gives room to all possible applications. Dual screen: For demanding users, a second vertical 15" or 24" landscape screen can be connected. For educational purposes, schools, universities, a full HD projector can be connected to the HDMI supported outlet. With this many options in Hardware and Software configuration, yearly updates and on demand upgrades, IMPRESSIONS™ is truly the leading software in the industry.



FEATURED BY IMPRESSIONS v2

ADVANCED SOFTWARE APPLICATIONS



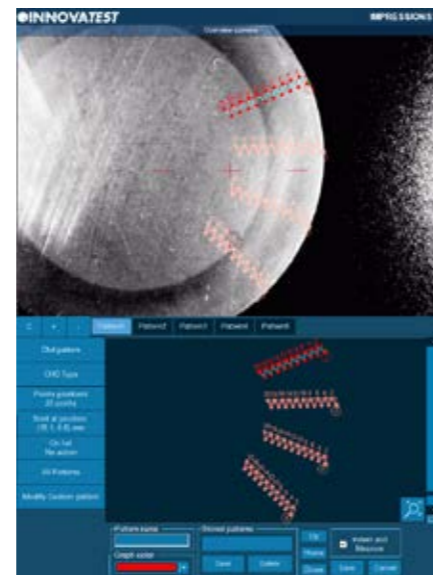


1 VIDEO OVERLAY GRAPHIC PATTERN EDITOR

The IMPRESSIONS™ pattern editor allows the user to create any number of test patterns with a large number of variable settings. Create test patterns with great precision and freedom. Verify the settings in the preview mode. Drag & drop patterns from one test sample to another sample. Live vision technique over zoom overview camera, no image stitching required. Combine different patterns and even different test forces in one program, and run them fully automatically. All test points can be identified individually or to customer specifications. The label is shown in the test result list and in the test results overview and print out. An important function for later sample analyses.

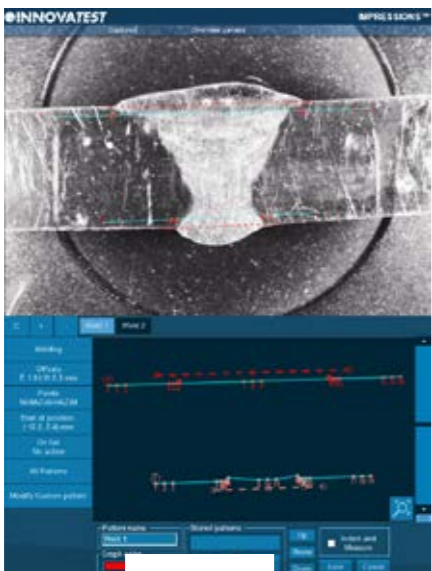
2 CHD, SHD, NHD

For the performance of test series for CHD/SHD/NHD data of specimens according to standard. The test can be started directly from the surface view or from the overview. Additional core points of hardness can be defined separately for NHD measurements. The distances of test points are automatically set to a minimum distance, following the standard, to assure correct testing is conducted. Time saving test mode "complete all indentations – then evaluate" and "auto-stop" to complete test series as soon as the lower hardness limit has been reached.



3 WELD INSPECTION (ISO 9015)

This especially developed tool enables you to conduct hardness testing on welded parts or segments according to ISO standard. Setting up the pattern according to the requirements becomes "easy-to-do", due to pre-set test points in the different zones of the weld and automatic correlation between test points. The system will run a fully automatic test procedure and display and record the results accordingly.



Easy to operate, time reducing solutions...

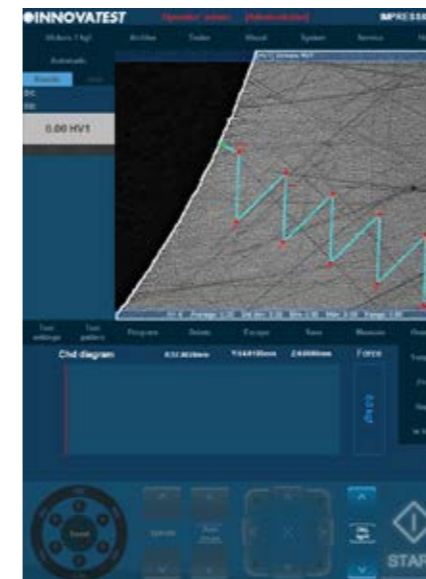
4 HARDNESS OF SCREW THREAD DECARBONIZED ZONE (ISO-898-1)

A specialized software tool of IMPRESSIONS™ allows you to set up and conduct fully automatic testing as per ISO 898-1 for screw thread measurement of (de)-carbonized part.



5 AUTOMATIC EDGE DETECTION

Technology that automatically or at a mouse click recognizes the edge of your sample. This helps to determine and fix the desired starting position for CHD or other pattern testing jobs.

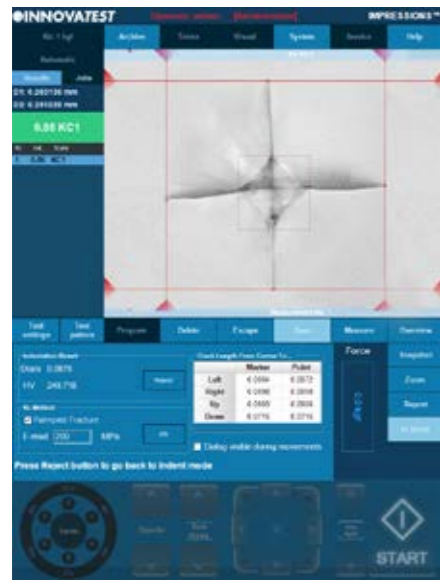


6 AUTOMATIC CONTOUR SCANNING

This application scans the entire outline (or partial) area of a sample. The function can be used with an objective or, ultra fast, by using the overview zoom camera. The system scans the entire outline defined and stores all relevant data in the test program. Subsequently, a chosen number of test points can be programmed into the particular program, or be conducted at selected distances, relative to the edge. This advanced feature enables the hardness testing procedure to be performed completely automatic. An excellent feature to combine with 2D or 3D hardness mapping, also known as "plane hardness chart".

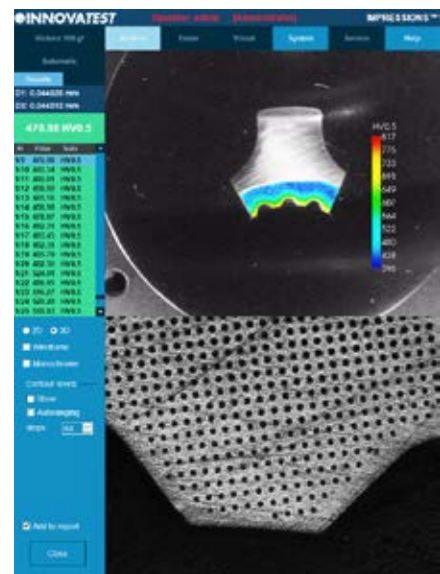


Yes, we can...



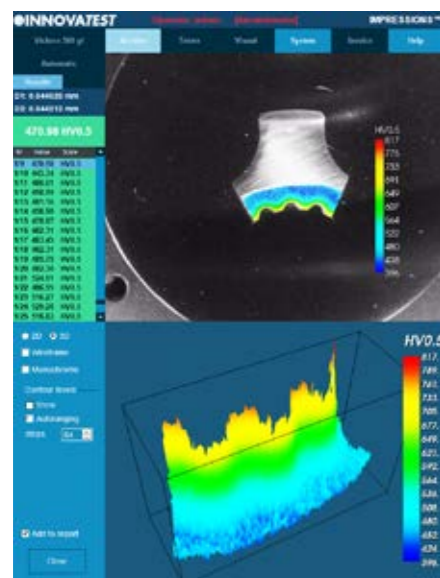
7 Kic CRACK MEASUREMENT

For those requiring more in depth knowledge on materials behavior, and wish to study on fracture and fatigue, crack growth can be predicted (and measured) by using the Kic application. The software supports Kic crack detection under load. At choice, one of both methods, Palmqvist or Median / Radial fracture toughness can be selected.



8 2D HARDNESS CHART

The optional application „Plane hardness chart“, also referred to as Color Mapping is the perfect tool for securing the detail of the hardness distribution over the total cross section, especially of heat treated samples. An important feature in material exploration, weld testing or in damage analysis.



9 3D HARDNESS CHART

Besides the option to display a 2D graphic diagram, the system can generate a 3D visual. 2D and 3D hardness chart are one application.

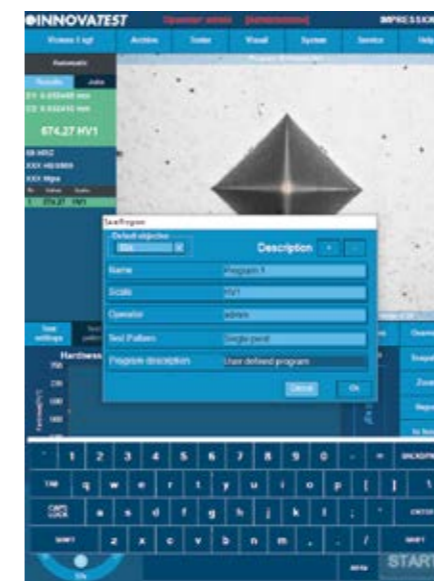
10 SNAPSHOT FUNCTION

This handy function in IMPRESSIONS™ allows you to make screen captures of the viewing area. It gives the opportunity to store such images with comments or to paste them into the report generator for further processing.



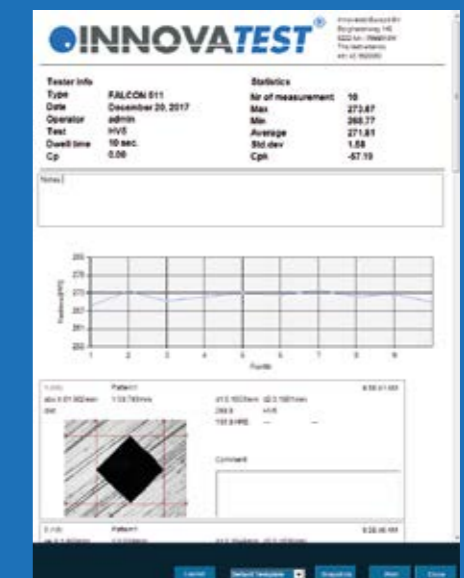
11 USER DEFINED PROGRAMS

For repeating jobs, IMPRESSIONS™ utilizes the option of setting up and storing custom test programs. For each task, a “job” can be created. All application specific parameters, like hardness scale, force, dwell-time, pattern, conversion and the report template are stored in the same program.



12 REPORT GENERATOR

The report generator offers to design customized testing reports, including your company's details and logo and include testing results, graphics and pictures of indentations in an easy to edit environment. The file can be printed straight to a connected laser printer for further distribution. Alternatively the file can be exported as a CSV file, to be used in MS Office applications or 3rd party quality assurance software.





INNOVATEST
 82307177 DUNGHE
 Bugharweg 140
 8222 AA Steenwijk (NL)
 Phone: +31 40 300000
 info@innovatest.nl

Tester info:		Statistics:	
Type	FALCON 600	Nr of measurement	40
Date	24-1-2018	Max	156.78
Operator	Admin	Min	110.86
Dwelltime	10 sec.	Average	133.12
Test	HV0.5	Standard Deviation	13.01
Program	5 etuis Op6/7 12.7x96 courbes FN14	Range	45.93

Game: 18097-104
 four: 4
 Notes:

HARDNESS DIAGRAM

Min	Max	Mean	Std. Dev.	Count	1	2	3	4	5
126	129	128	1.67	10	126.21	133.00	142.24	137.62	141.39
103	104	103	1.73	3	102.24	103.71	110.34	109.06	
100	101	100	20.0	5	815.4	100.72	101.33	101.33	100.40
102	106	104	23.0	4	117.87	106.87	111.17	122.98	118.71
106	107	106	1.07	8	106.26	106.26	107.88	107.28	109.38
115	119	116	1.47	4	116.20	116.30	142.37	143.12	138.11
105	105	105	80.0	7	148.98	148.98	136.4	147.17	148.28

AMMUNITION TESTING PATTERN CONFIGURATOR & REPORTING

This application is developed in close cooperation with special manufacturers of ammunition shells and casings. It allows single and multiple shell/casing testing according to the requirements in the industry. The fully automatic test procedure generates a detailed report, providing single readings and statistics with Go/No Go indication. This further includes sophisticated settings for re-measurement. For particular details please contact our sales department.

INCOMPREHENSIBLE
POSSIBILITIES

The frame size OF THE NEMESIS 9600 allows a large workspace accomodation of 650mm (H) x 395mm (D). Regardless of the shape of a particular workpiece, the accessories list and corresponding software applications enable to test almost any component and part up to 800 kg.



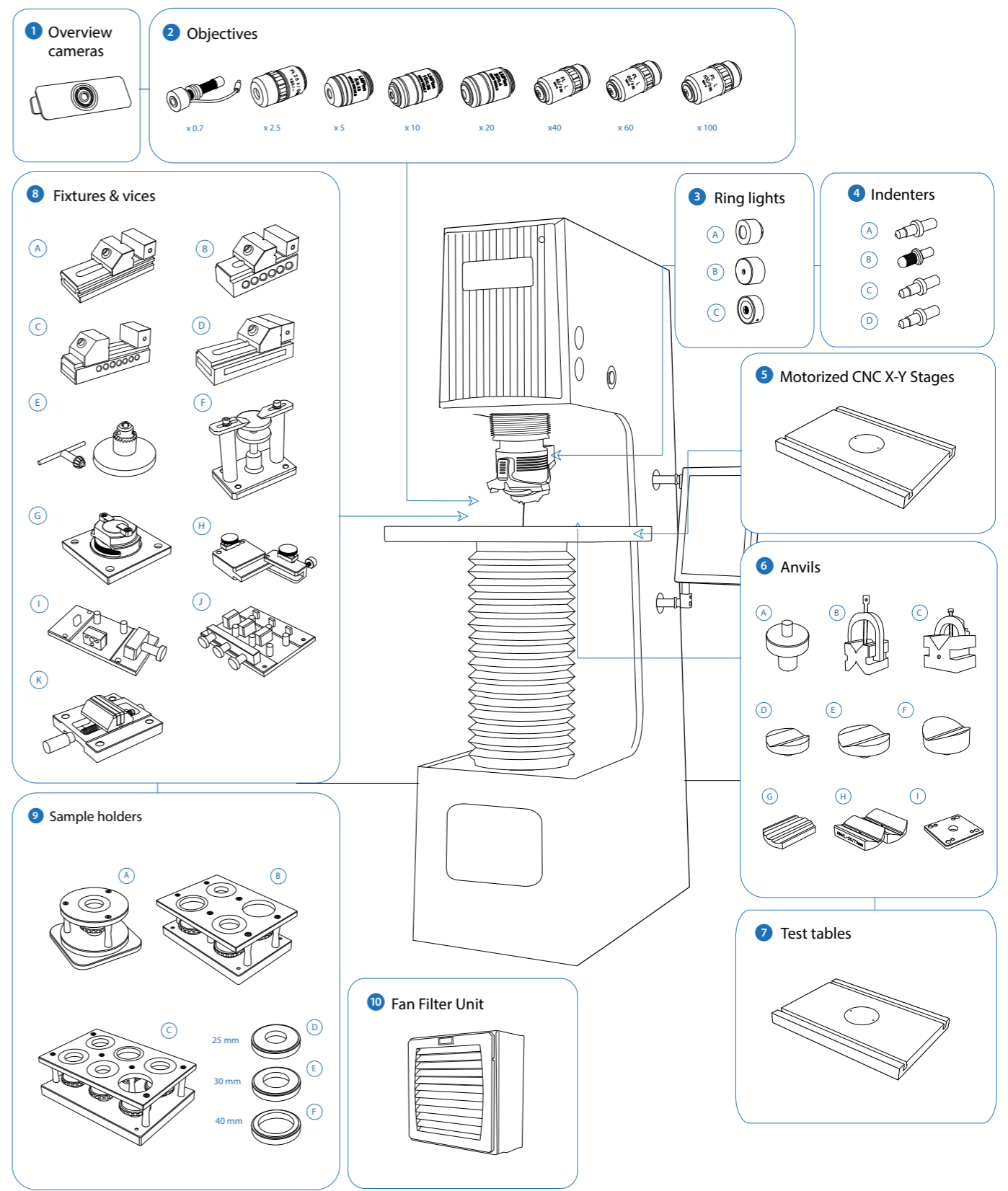


NEMESIS 9600

HEAVY DUTY

ACCESSORIES NEMESIS 9600

Schematic overview of the configuration options, standard and optional accessories



Not all accessories are displayed on this page. Full details can be found on the Order details page.

ORDER DETAILS

NEMESIS 9600



Universal hardness tester, 500gf - 250kgf, heavy duty	NEMESIS 9601	
Universal hardness tester, 200gf - 250kgf, heavy duty	NEMESIS 9602	
Universal hardness tester, 5kgf - 3000kgf, heavy duty	NEMESIS 9603	
Universal hardness tester, 200gf - 3000kgf, heavy duty	NEMESIS 9604	
Plug & Play prepared, calibration, sea & airworthy packing in "non coniferous wood" material	P&PSEAPACK170	
Rockwell Twin Scale hardness tester 3kgf - 150kgf	NEMESIS 9600RS	
Rockwell Twin Scale / Brinell hardness tester 3kgf - 3000kgf	NEMESIS 9603RS	
Brinell hardness tester, 5kgf -3000kgf, incl. BIOS system	NEMESIS 9600B	
Plug & Play prepared, calibration, sea & airworthy packing in "non coniferous wood" material	P&PSEAPACK180	

ACCESSORIES

1	Overview Camera	Overview / Full view zoom camera + software functionality, Includes overview lights	SA-05-0019	
2	Objectives	2.5x Long Working Distance objective	ASSUN-OBJ2.5X	STANDARD
		5x Long Working Distance objective	ASSUN-OBJ5X	
		10x Long Working Distance objective	ASSUN-OBJ10X	STANDARD
		20x Long Working Distance objective	ASSUN-OBJ20X	
		40x Long Working Distance objective	ASSUN-OBJ40X	
		60x Long Working Distance objective	ASSUN-OBJ60X	
		100x Long Working Distance objective	ASSUN-OBJ100X	
		0.7x Objective with Ringlight for Brinell	AS9000-0,7OBJ	STANDARD
		High speed 8 position turret (revolver head), for 3 indenters, 3 objectives, Laser positioning guide	UN-8POSTUR	STANDARD
3	Ring Lights	A Crystal™ Clear LED ring light, single use for 0.7x objectives	SA-05-0008	
		B Crystal™ Clear LED ring light, single use for 5x objectives	SA-05-0014	
		C Crystal™ Clear LED ring light, single use for 2.5x objectives	SA-05-0015	
		Crystal™ Clear LED ring light, multi use for 0.7x objectives	SA-05-0020	
		Crystal™ Clear LED ring light, multi use for 2.5x objectives	SA-05-0021	
		Crystal™ Clear LED ring light, multi use for 5x objectives	SA-05-0022	
4	Indenters	A Rockwell C Diamond Indenter, ISO & ASTM certified	IN/6005	
		B Brinell Indenter 1mm. Includes 1 carbide ball. Ø6.35mm. ISO & ASTM certified	IN/7000	
		Brinell Indenter 2.5mm. Includes 1 carbide ball. Ø6.35mm. ISO & ASTM certified	IN/7005	
		Brinell Indenter 5mm. Includes 1 carbide ball. Ø6.35mm. ISO & ASTM certified	IN/7010	
		Brinell Indenter 10mm. Includes 1 carbide ball. Ø6.35mm. ISO & ASTM certified	IN/7015	
		Rockwell Ball Indenter 1/16". Includes 1 carbide ball, ISO & ASTM certified	IN/7506	
		Rockwell Ball Indenter 1/8". Includes 1 carbide ball, ISO & ASTM certified	IN/7606	
		Rockwell Ball Indenter 1/4". Includes 1 carbide ball, ISO & ASTM certified	IN/7706	
		Rockwell Ball Indenter 1/2". Includes 1 carbide ball, ISO & ASTM certified	IN/7806	
		C Macro Vickers Indenter Ø6.35mm, ASTM/ISO Certified	IN/8010	
		D Micro Knoop Indenter Ø6.35mm, ASTM/ISO Certified	IN/8220	

		1.0mm carbide ball with ASTM & ISO cert. only for ø6.35mm	IN/2005	
		2.5mm carbide ball with ASTM & ISO cert. only for ø6.35mm	IN/2010	
		5.0mm carbide ball with ASTM & ISO cert. only for ø6.35mm	IN/2015	
		10.0mm carbide ball with ASTM & ISO cert. only for ø6.35mm	IN/2020	
		1/16" carbide ball, ASTM & ISO certified	IN/2507	
		1/8" carbide ball, ASTM & ISO certified	IN/2509	
		1/4" carbide ball, ASTM & ISO certified	IN/2514	
		1/2" carbide ball, ASTM & ISO certified	IN/2519	
5	Motorized CNC X-Y Stages	Motorized CNC X-Y stage, 237x188mm, total load up to 100Kgf max Displacement: 100x100mm, resolution 0.001 mm, repeatability +/-0.003mm	UN-XY561010	
		Motorized CNC X-Y stage, 257x188mm, total load up to 400Kgf max Displacement: 120x100mm, resolution 0.001 mm, repeatability +/-0.003mm	UN-XY571210	
		Motorized CNC X-Y stage, 307x208mm, total load up to 400Kgf max Displacement: 170x120mm, resolution 0.001mm, repeatability +/-0.003mm	UN-XY571712	
		Motorized CNC X-Y stage, 337x188mm, total load up to 400Kgf max. Displacement: 200x100mm, resolution +/- 0.001mm, repeatability +/-0.003mm	UN-XY572010	
		Motorized CNC X-Y stage, 357x208mm, total load up to 400Kgf max Displacement: 220x120mm, resolution 0.001mm, repeatability +/- 0.003mm	UN-XY572212	
		Motorized CNC X-Y stage, 337x238mm, total load up to 400Kgf max. Displacement: 200x150mm, resolution 0.001mm, repeatability +/- 0.003mm	UN-XY902015	
		Motorized CNC X-Y stage, 437x238mm, total load up to 450Kgf max. Displacement: 300x150mm, resolution 0.001mm, repeatability +/- 0.003mm	UN-XY903015	
		Motorized CNC X-Y stage, 630x238mm, total load up to 450Kgf max Displacement: 400x150mm, resolution 0.001mm, repeatability +/-0.003mm	UN-XY904015	
		Motorized CNC X-Y stage, 410x280mm, total load up to 4000Kgf max. Displacement: 200x150mm, resolution 0.001mm, repeatability +/- 0.008mm	UN-XY932015	
		Motorized CNC X-Y stage, 510x280mm, total load up to 4000Kgf max. Displacement: 300x150mm, resolution 0.001mm, repeatability +/- 0.008mm	UN-XY933015	
		Motorized CNC X-Y stage, 630x238mm, total load up to 4000Kgf max. Displacement: 400x150mm, resolution 0.001mm, repeatability +/- 0.008mm	UN-XY934015	
	Cable sets, Mounting & Connectivity for Motorized Stages	Lock flange	AS9500-11-12	
		Mounting plate for lock flange	UN-XYZ30FP50-100	
		Cable set for connecting CNC stage to embedded driver (1 set for 2-axis) 155cm	UN-XY2CABLENBL	
6	Anvils	A Spot anvil 10mm	UN-ANVIL/016	
		B V block with bracket 40x40x50mm (LxBxH)	UN-VBLOCK404050	
		C Steel, cross type, (X) V-block 60x120x100mm 8-90mm pair	UN-CROSSBLOCK01	
		D V-anvil ø120mm 15-100mm	UN-ANVIL/060	
		E V-anvil ø120mm 3.3-20mm	UN-ANVIL/065	
		F V-anvil ø120mm 30-200mm	UN-ANVIL/070	
		G Small V-Anvil 3-20mm requires base plate (Requires Manual/Autom. X-Y stage)	UN-ANVILSV/105	
		H Large V-Anvil 20-75mm requires base plate (Requires Manual/Autom. X-Y stage)	UN-ANVILLV/106	
		I Base plate for V-anvils un-anvilsv/105 & 106	UN-VANVILBASEPL	

7	Test Tables	Large flat surface testing table 650X500mm, thickness 45mm with 2 T-slots, for large components	UN-TESTTABLE/017	STANDARD
	Clamping, Locking & Fixing Adapters	Lock flange	AS9500-11-12	
8	Fixtures and Vices	(A) Polished precision vice with lock down system, jaw width 25mm, opens 20mm	UN-VICE/210	
		(B) Polished precision vice with lock down system, jaw width 36mm, opens 42mm	UN-VICE/215	
		(C) Polished precision vice with lock down system, jaw width 48mm, opens 75mm	UN-VICE/220	
		(D) Polished precision vice with lock down system, jaw width 75mm, opens 100mm	UN-VICE/230	
		(E) Axle chuck 500 series for cylinder parts, dia. 0.4mm to 5mm	UN-AXLECHUCK	
		(F) Universal Clamp & Leveling Device	UN-CLAMP/105	
		(G) Thin metal clamp	UN-CLAMP/115	
		V groove clamp for small round parts dia.0.8-5mm	UN-VGROOVE- CLAMP	
		(H) Wire Testing Fixture	UN-WIRE/105	
		(I) JOMINY Fixture, for 1 quench end test sample, quick release function	UN-JOMFIX1	
		(J) JOMINY Fixture, for 3 quench end test sample, quick release function	UN-JOMFIX3	
		(K) Small parts vice jaw width 55mm, open 50mm, self centering	UN-VICE/115	
9	Sample Holders	(A) 1 position sample holder, for 1 embedded sample, diameter 50mm or 2"	UN-ESH1	
		(B) 4 position sample holder, for max. 4 embedded samples, diameter 50mm or 2"	UN-ESH4	
		(C) 6 position sample holder, for max. 6 embedded samples, diameter 50mm or 2"	UN-ESH6	
		(D) 1 insert reduction ring 25mm	UN-ESHI25	
		(E) 1 insert reduction ring 30mm	UN-ESHI30	
		(F) 1 insert reduction ring 40mm	UN-ESHI40	
		1 insert reduction ring 1"	UN-ESHI1	
		1 insert reduction ring 1 1/4"	UN-ESHI125	
		1 insert reduction ring 1,5"	UN-ESHI15	
10	Fan Filter Unit	Dust Protection System	SA-16-0001	
	Printer	Laser Printer	UN-PRINT	
	ISO/ASTM Verification	BRINELL direct and indirect verification/calibration & certification in compliance with ISO & ASTM, NADCAP. Includes direct force and indirect verification report (block readings), GR & R report, flat fee for selected common scales, per scale.	CALCEFRDW/1B	
		ROCKWELL direct and indirect verification/calibration & certification in compliance with ISO & ASTM, NADCAP. Includes direct force and indirect verification report (block readings), GR & R report, flat fee for selected common scales, per scale.	CALCEFRDW/1R	
		VICKERS direct and indirect verification/calibration & certification in compliance with ISO & ASTM, NADCAP. Includes direct force and indirect verification report (block readings), GR & R report, flat fee for selected common scales, per scale.	CALCEFRDW/1V	
		KNOOP direct and indirect verification/calibration & certification in compliance with ISO & ASTM, NADCAP. Includes direct force and indirect verification report (block readings), GR & R report, flat fee for selected common scales, per scale.	CALCEFRDW/1K	
	Cover	Anti Static machine cover 2000x5000mm	UN-TESTERCOVER07	

ACCESSORIES

OVERVIEW CAMERA



SA-05-0019

OBJECTIVES



RING LIGHTS



INDENTERS



MOTORIZED CNC X-Y STAGES



- UN-XY561010
- UN-XY571210
- UN-XY571712
- UN-XY572010
- UN-XY572212
- UN-XY902015
- UN-XY903015
- UN-XY904015
- UN-XY932015
- UN-XY933015
- UN-XY934015

ANVILS



FIXTURES AND VICES



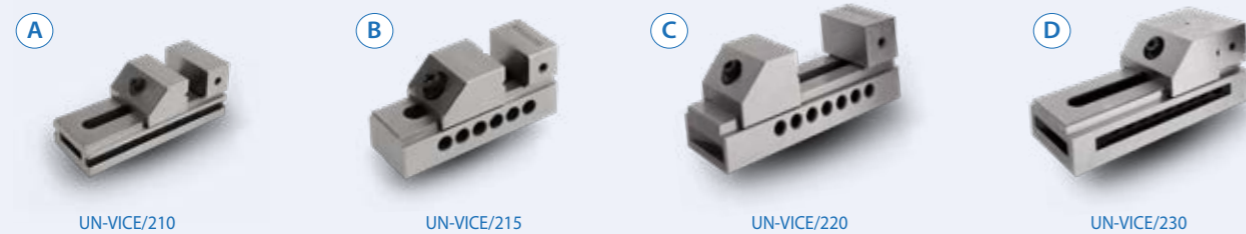
TEST TABLES



SAMPLE HOLDERS



FIXTURES AND VICES



FAN FILTER UNIT



ORDER DETAILS

SOFTWARE

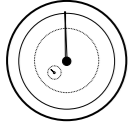
Additional Software	Automatic measurement	UN-AUTOM	STANDARD
	Automatic focussing	UN-AUTOFOC	STANDARD
	Report configurator	UN-REPORTA	STANDARD
	Snapshot function	UN-SNAPSH	STANDARD
	Advanced 3 axis coordinate & free style indent pattern configurator, for motorized stage only	UN-TESTPAT1	
	KiC crack detection under load. Palmqvist & Median / Radial fracture toughness	UN-CRKPAR	
	Automatic Contour scanning	UN-CSCAN	
	2D / 3D hardness scanning (mapping, includes automatic contour scanning)	UN-CSCAN2D3D	
	Drawing and measuring (distance & angles) application	UN-DRMEAS	
	Automatic edge detection	UN-EDGEDTC	
	Force depth/time diagram	UN-FDDIAGR	
	ISO 898-1 screw thread measurement of (de)-carbonized part	UN-ISO898/1	
	ISO-2702 tap screw thread measurement	UN-ISO2702	
	User level management	UN-LEVMAN	STANDARD
	Manual & automatic on-screen measurement	UN-MANM	STANDARD
	CHD, SHD, NHD configurator & graphic interface requires: indent pattern configurator (TESTPAT01)	UN-PATCHD	
	Q-DAS Certified connectivity protocol	UN-QDAS	
	Advanced 3-axis communication protocol for robotic systems	UN-REMC	
	ISO bullets casings pattern configurator and reporting system	UN-SHELLCONF	
	ISO 9015 Weld pattern configurator (automatic weld pattern configurator), requires overview camera or AS9000-0.7OBJ	UN-WELDPAT	
	Virtual Joystick, on screen		STANDARD

Connectivity Plus	"Powerfull External Intell Core i7 PC, with 16gb RAM, and 512gb SSD drive (or better) Windows 10 pre-installed, IMPRESSIONS™ tester work flow software INNOVATEST recommends Embedded Industrial computers with DeepFreeze enabled."	UN-SYSPCIMP01	
	Blue Tooth connectivity	UN-BTADAPT	
	Utility software; Import test results in MS applications like Excel	UN-SW/905	
	USB to USB null modem cable 2.5M	BE-99-0025	
	Wireless system Keyboard & wireless mouse	UN-SKBSET	STANDARD

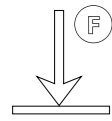


SPECIFICATIONS

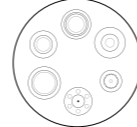
HARDNESS SCALES

	ROCKWELL	Regular Rockwell scales; Pre Load 10kgf, Main Load 60kgf 100kgf 150kgf A B C D E F G H K L M P R S V Superficial Rockwell scales; Pre Load 3kgf, Main Load 15kgf 30kgf 45kgf 15N 30N 45N 15T 30T 45T 15W 30W 45W 15X 30X 45X 15Y 30Y 45Y
	EN-ISO 6508 ASTM E-18 JIS Z 2245	
	VICKERS	HV0.2 HV0.3 HV0.5 HV1 HV2 HV2.5 HV3 HV4 HV5 HV10 HV20 HV25 HV30 HV40 HV50 HV100 HV120 HV150 All test forces are also available for the HVD (HVT) scales
	ISO 6507 ASTM E384, E92 JIS B 7725	
	Kic Fracture toughness	All Vickers forces & scales
	KNOOP	HK0.2 HK0.3 HK0.5 HK1 HK2 HK5
	ISO 4545 ASTM E92 JIS Z 2251	
	BRINELL	HBW1/1 HBW1/1.25 HBW1/2.5 HBW1/5 HBW1/10 HBW1/30 HBW2.5/6.25 HBW2.5/7.8125 HBW2.5/15.625 HBW2.5/31.25 HBW2.5/62.5 HBW2.5/187.5 HBW5/25 HBW5/31.5 HBW5/62.5 HBW5/125 HBW5/187.5 HBW5/250 HBW10/100 HBW10/125 HBW10/250 HBW10/750 HBW10/1000 HBW10/1500 HBW10/3000 All test forces are also available for the HBD (HBT) scales
	ISO 6506, ASTM E10 JIS Z 2243	
	HVD (HVT)	All Vickers test forces, as per above table.
	HBD (HBT)	All Brinell test forces, as per above table.
	PLASTIC	49 N, 132 N, 358 N, 961 N
	ISO 2039	
	CARBON	HR 2.5/7 HR 5/7 HR 5/15 HR 5/20 HR 5/40 HR 5/60 HR 5/100 HR 5/150 HR 10/20 HR 10/40 HR 10/60 HR10/100 HR 10/150
	CONVERSIONS	Conversion to other hardness scales according to ASTM E140, ISO 18265, GB/T 1172


TEST FORCE

	Force application	Multi-load cell, closed loop, force feedback system
	Test forces	0.2kgf – 3000kgf
	Force range per model	NEMESIS 9601 500gf – 250kgf NEMESIS 9602 200gf – 250kgf NEMESIS 9603 5kgf - 3000kgf NEMESIS 9604 200gf - 3000kgf
	Test force tolerance	< 0.25% for test force 100gf to 250kgf < 0.5% for test force below 100gf
	Dwell time settings	Default 10 seconds, user defined. Up to 250 seconds

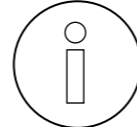
TURRET

	Motorized turret	Ultra-fast, 8 position turret, 3 indenter positions, 3 objective positions
	Objectives	Long working distance 0.7x, 2.5x, 5x, 10x, 20x, 40x, 60x, 100x
	Indenters	Certified indenters (ISO/ASTM) available at choice
	Camera 1 (objective)	18 Mpx, HD, 4K+, Machine vision system
	Camera 2 (overview)	Full HD, Full Color, Optical zoom system

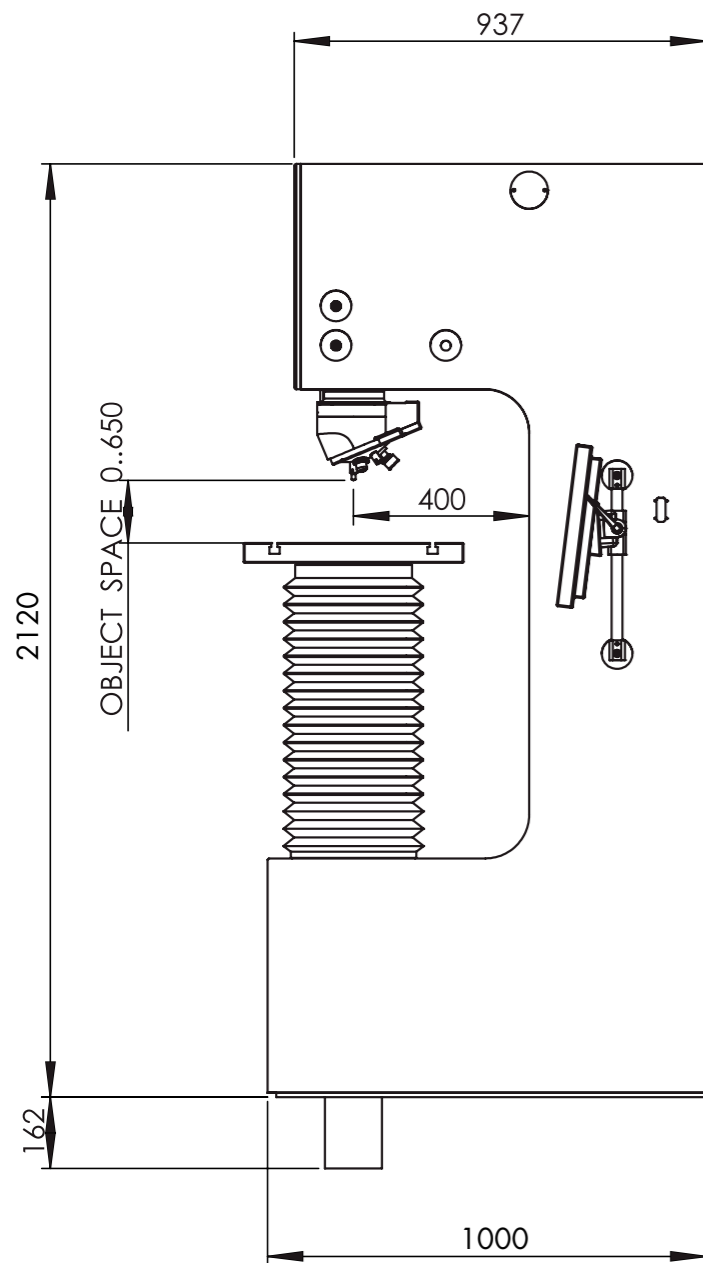
SYSTEM

	Electronic system Standard (Recommended)	High performance embedded controller, i7, mSSD 120 GBxx, MS Windows® 10 operated, up to 8 years* INNOVATEST warranty
	Electronic system (Optional)	High performance external controller, i7, mSSD 120 GBxx, MS Windows® 10 operated, 1 year factory warranty
	CNC support	CNC controller (for motorized stages) or stage accessories
	Screen(s)	15" portrait mode capacitive touch screen, second screen option
	Display resolution	0.01 HV, HK, HB
	Statistics	Total test, max, min, average, range, standard deviation, All in real time after each test
	Hardness conversion	Rockwell, Rockwell Superficial, Vickers, Brinell, Knoop, Leeb & Tensile
	Software	IMPRESSIONS™ V2, work flow system & tester control
	Data storage capacity	Internal and external mSSD, SSD or HDD
	Data output	XML, CSV, Certified for Q-DAS (Optional)
	Connectivity	5 USB ports, RJ45 Ethernet LAN, W-LAN, RS-232, Blue Tooth, 5 Axis CNC & motorized XY-stage connector, Dual HDMI screen connectors
Printer	A4, A3 full color laser printer (optional)	

GENERAL

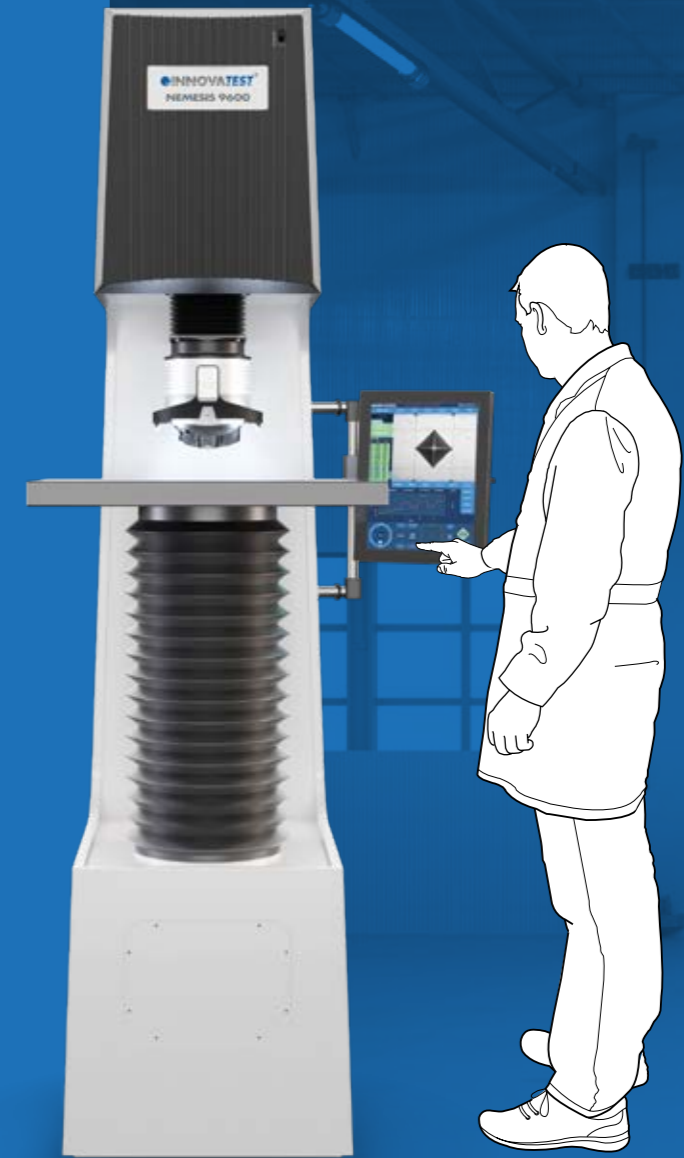
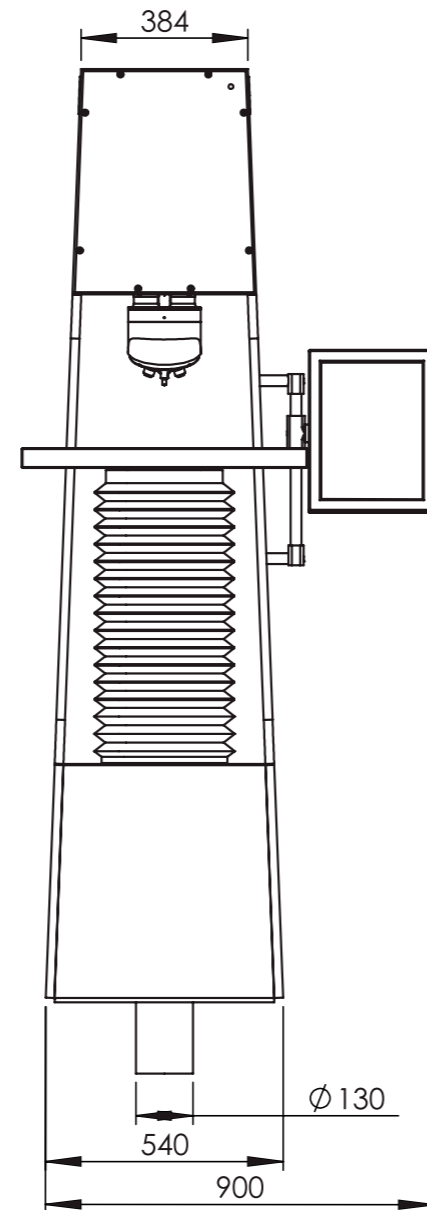
	Machine dimension	2120 mm x 540 mm x 1000 mm
	Machine weight	1100 kg
	Power supply	100VAC to 240VAC, 50/60Hz, single phase
	Operating temperature	10°C to 35°C, non-condensing
	Power consumption	100W
	Humidity	10% to 90%, non-condensing

TECHNICAL DRAWINGS



All dimensions in these drawings are in mm, approximate. Working heights and or workpiece accommodation varies depending on the stages and stage accessories used.

Please contact our sales department for more details.



ROBUST

STURDY & RIGID

OTHER MODELS IN THE UNIVERSAL RANGE



NEXUS 605U

Fully automatic, load cell, closed loop, force feedback universal hardness tester with electronic micrometer or analogue eyepiece. i-Touch, 6.5" full color touch screen.



VERZUS 750CCD

Fully automatic, load cell, closed loop, force feedback universal hardness tester with electronic micrometer or analogue eyepiece. IMPRESSIONS™ 8.5" full color touch screen.



NEXUS 7700

Fully automatic, load cell, closed loop, force feedback universal hardness tester with full HD optical zoom stage overview camera, IMPRESSIONS™ 12" full color touch screen.
See brochure B19N7700/XX



NEXUS 8100

Heavy duty fully automatic, load cell, closed loop, force feedback universal hardness tester with full HD optical zoom stage overview camera, IMPRESSIONS™ 15" full color touch screen.
See brochure B19N8100/XX



NEXUS 8100XL

Fully automatic, Load Cell, closed loop Brinell, Rockwell, Superficial Rockwell hardness tester with manual or motorized Z-Axis & Brinell Indent Optical Scanner.
See brochure B198100/XX



NEMESIS 5100

Multi Load Cell, Closed loop Fully automatic, 8 position turret Rockwell, Superficial Rockwell, Micro/Macro Vickers, Knoop & Brinell Hardness testers Descending test head, fixed work piece position
See brochure B18N5100/XX



NEMESIS 9100

Multi Load Cell, Closed loop Fully automatic, 8 position turret Rockwell, Superficial Rockwell, Micro/Macro Vickers, Knoop & Brinell Hardness testers Descending test head, fixed work piece position
See brochure B18N9100/XX

Changes in products and/or product specifications can emerge due to new technologies and continuous development.

We reserve the right to change or modify specifications of the products without prior notice. We recommend you to contact our sales office for up-to-date information.

Brochure B19N9600/03/EN

Distributor :

CORPORATE HEAD OFFICE

INNOVATEST Europe BV

Manufacturing, Distribution & Service

Borgharenweg 140
6222 AA MAASTRICHT
The Netherlands

Phone: +31 43 3520060

Fax: +31 43 3631168

info@innovatest-europe.com

www.innovatest-europe.com

INNOVATEST Deutschland GmbH Sales & Service

Phone: +49 245 670 59 500
info@innovatest-deutschland.com
www.innovatest-deutschland.com

INNOVATEST Polska sp. z.o.o Sales & Service

Phone: +48 697 099 826
info@innovatest-polska.pl
www.innovatest-polska.pl

INNOVATEST Shanghai Co., Ltd. Sales & Service

Phone: +86 21 60906200
info@innovatest-shanghai.com
www.innovatest-shanghai.com

INNOVATEST Japan Co., Ltd. Sales & Service

Phone: +81 3 3527 3092
info@innovatest-japan.com
www.innovatest-japan.com

INNOVATEST USA Company Sales & Service

Phone: +1 267 317 4300
info@innovatest-usa.com
www.innovatest-usa.com

INNOVATEST South East Asia Sales & Service

Phone: +65 6451 1123
info@innovatest-singapore.com
www.innovatest-singapore.com