

FALCON 500

Micro Hardness Tester | Vickers, Knoop, Brinell

MANUAL / SEMI - FULLY **AUTOMATED**



FALCON 500

Unparalleled configuration freedom...

The FALCON 500 offers a leading technology base for manual, automatic or fully automated testing of Micro and Macro Vickers, Knoop or Brinell assignments.

With a wide choices of test force configurations, answering any possible imagination, the FALCON 500 can be completed with fully integrated hardware options to assure a match with the particular testing tasks of your industry. Coming from a leading edge of mechanical design, the load cell, closed loop system of the base unit can be completed with manual or digital micrometers or for more testing comfort, with motorized CNC stages.

The unique motorized ball bearing Z-axis provides accurate height movement and high speed autofocus. The user interface, provides manual & automatic measurement and a wide selection of standard and optional testing applications, supporting a high resolution (HD) camera and a second (optional) full work stage overview camera.



A FORCE RANGE THAT SETS NEW STANDARDS!

1gf	3gf	2kgf	FALCON 501	62.5kgf
1gf	10gf	10kgf	FALCON 503	62.5kgf
1gf	200gf	31.25kgf	FALCON 505	62.5kgf
1gf	10gf	31.25kgf	FALCON 507	62.5kgf
1gf	31.25kgf	FALCON 508	62.5kgf	
1gf	200gf	FALCON 509	62.5kgf	
1gf	10gf	FALCON 510	62.5kgf	
1gf	FALCON 511	62.5kgf		

HARDNESS SCALES



VICKERS

1gf - 50kgf *



KNOOP

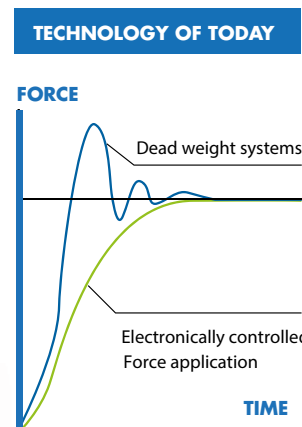
1gf - 5kgf *



BRINELL

1kgf - 62.5kgf *

* All scales

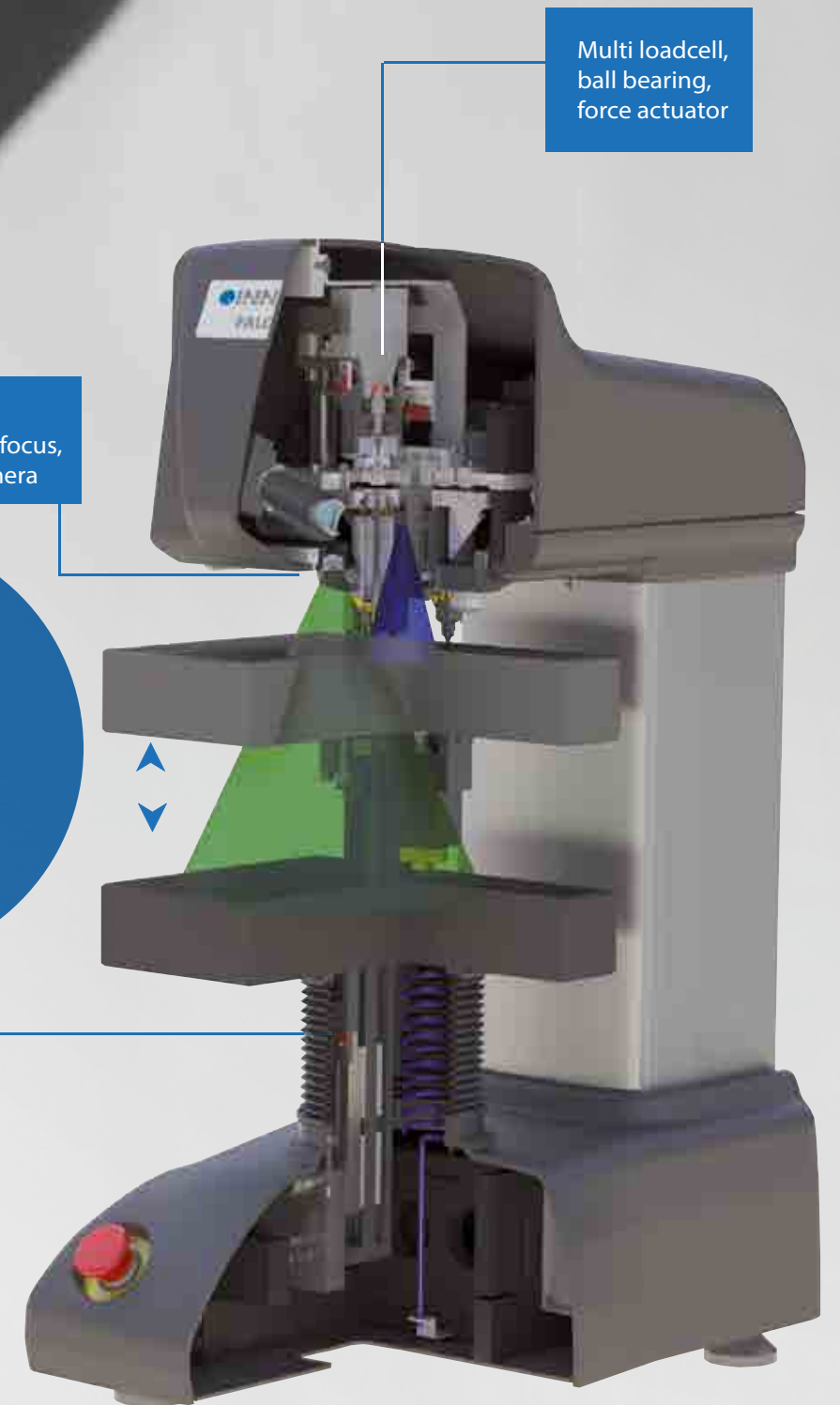


Load cell, closed loop,
force feedback system

HIGHLIGHTS

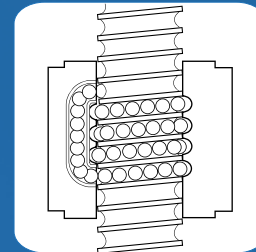
- 1 Multi Load Cell, Closed Loop force application system, error <0,25%
- 2 6 position turret, 2 indenter positions (optional), 3 LWD objectives installed (included)
- 3 Turret collision detection and workpiece retraction safety system
- 4 5 Megapixels, Full HD+, integrated TTL camera system
- 5 HD full color stage overview camera with optical zoom system
- 6 TTL power LED with color filter, Dual bank power LED stage illumination
- 7 Z-axis with ball bearing spindle (standard)
- 8 Integrated system controller, i7 processor, mSSD Raid system storage
- 9 Industrial 15" touch screen, option for second screen 15" to 55" or projector
- 10 Top-class replaceable body parts, shock proof ABS covers

BOUNDLESS INNOVATION



OPTIONAL

Optical zoom, auto focus,
stage overview camera



Z-AXIS BALL SCREW
Precision movement

Observe, Think, Try, Change...

Rigidity and perpendicular indenter positioning are crucial to obtain Vickers indents with a perfect geometry. Re-invented, adjustable indenter actuators provide maintenance free, smooth force application, easy to access and easy to replace indenters. Standard integrated XY-stage overview camera with optical zoom reduces application set up time dramatically.

Changing the game...

1 6 POSITION PRECISION TURRET & OPTICAL SYSTEM

The 6 position turret is supplied as a standard feature on all 500 models and allows to install indenters for Vickers, Knoop and Brinell (balls 1mm 2.5mm & 5mm) testing. Factory installed, the FALCON 500 has four objectives. Depending on the configuration, choose from 2.5X, 5X, 10X, 20X, 50X, 100X that, in combination with the HD camera, with digital zoom, provide crisp images.

2 STAGE OVERVIEW CAMERA (OPTIONAL)

Create magnified sample overview with the standard on-board, autofocus, optical & digital zoom overview camera. The field of view of this sophisticated full color camera system does not limit you to one field of view, but gives a ZOOM range of 45 x 35mm up to 155 x 125mm without the need to use time consuming scan and stitch functions.

Once the viewing area needs to be larger than the zoom range, scanning and stitching can be selected to create full stage overview. Click and go is one of the standard testing features of the overview camera. Just click randomly on designated area's and push "start". All tests run automatically. The pattern video overlay function eases positioning of multiple test rows or patterns across the specimen. The pattern video overlay scales automatically with every magnification, stepless, while the zoom camera decreases or enlarges the overview.

3 DYNAMIC Z-AXIS CONTROL & COLLISION DETECTION

A high end ball bearing Z-axis spindle is one of the very unique functions. Z-axis displacement at an accuracy of micron's supports ultra-fast auto focus. Z-axis controls are nearly limitless; CNC as a result from a test program, by touch screen indicators, by the scroll wheel of the mouse, by fast up and down buttons or from a scroll wheel on the front of the machine. Speed control related to your own movement; (0.01 up to 20 mm/s). To avoid any collision between the work piece and the turret, the Z-axis is controlled by a flawless collision detection and Z-axis retraction system. So neither the tester nor the workpiece are exposed to any damage.

4 HIGH SPEED CNC MOTORIZED XY-STAGE (OPTIONAL)

Save time and improve efficiency with one of the high speed, highly accurate motorized XY-stages. Available in variable sizes from standard, to large and extra-large. Enable automated sequencing of multiple samples. The ultra-high accuracy and repeatability guarantee precise positioning of indents and allow re-evaluation of any measurement points in batch or single view. Repeatability within 3 micron.

CONNECTIVITY, CONTROL & QUALITY ASSURANCE

The system has bi-directional in and output channels. Tester control can be conducted remotely and supports for instance, but not limited to robotic systems. Test values can be exported as single values or as string of data to be handled by 3rd party quality evaluation software.

Q-DAS certified. (Optional)



5 15" HD TOUCH SCREEN OPERATOR INTERFACE

All machine control and process workflow can easily be operated from the 15" industrial capacitive touch screen. At choice a second 15" or larger screen can be connected.

6 SHOCK RESISTANT ABS MACHINE COVERS

The tester is fitted with a high-end external shell structure. The shock proof and damage resistant ABS machine covers can withstand the harshest environment.

Science fiction?...
No, just reality ahead of schedule

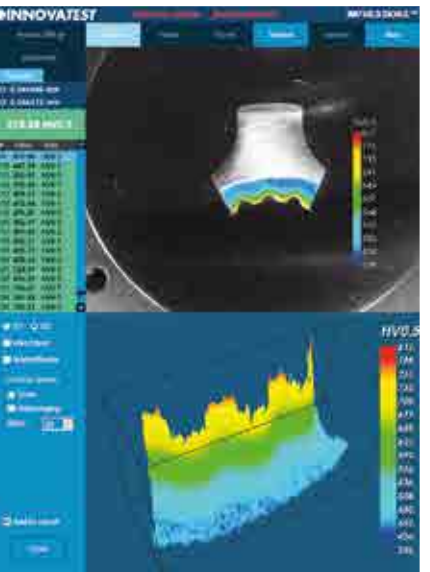
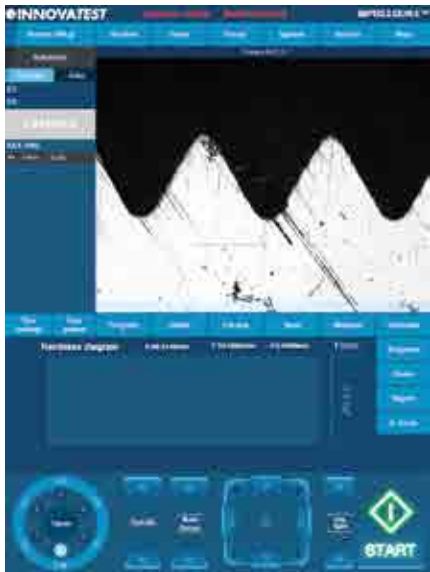
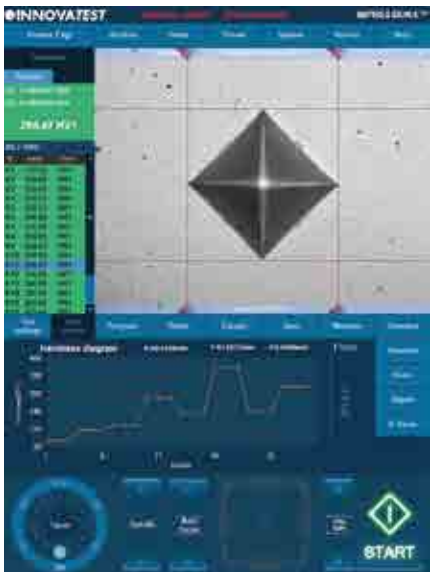
The Graphical User interface (GUI), contains industry preferred applications, and offers easy to learn, advanced workflow control. A simple test can be set up and conducted in about 3 seconds... IMPRESSIONS™ layout & functions will match not only your particular application requirements, but also meet the needs and preferences of your operators. A user level management system maximizes their comfort and efficiency.

The unique in the industry, 15" portrait mode, capacitive touch screen, gives room to all possible applications. Dual screen: For demanding users, a second vertical 15" or 24" landscape screen can be connected. For educational purposes, schools, universities, a full HD projector can be connected to the HDMI supported outlet. With this many options in Hardware and Software configuration, yearly updates and on demand upgrades, IMPRESSIONS™ is truly the leading software in the industry.



FEATURED BY
IMPRESSIONS v2

ADVANCED SOFTWARE APPLICATIONS



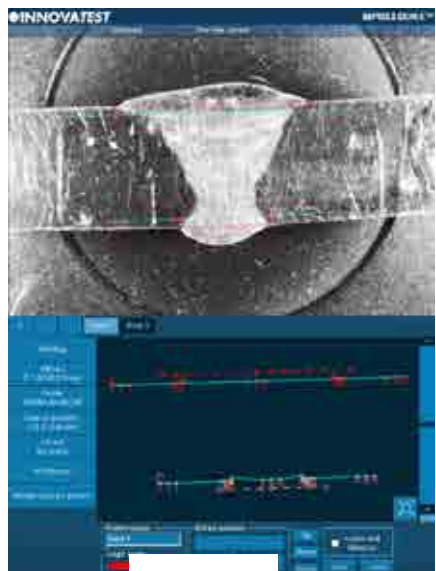


1 VIDEO OVERLAY GRAPHIC PATTERN EDITOR

The IMPRESSIONS™ pattern editor allows the user to create any number of test patterns with a large number of variable settings. Create test patterns with great precision and freedom. Verify the settings in the preview mode. Drag & drop patterns from one test sample to another sample. Live vision technique over zoom overview camera, no image stitching required. Combine different patterns and even different test forces in one program, and run them fully automatically. All test points can be identified individually or to customer specifications. The label is shown in the test result list and in the test results overview and print out. An important function for later sample analyses.

2 CHD, SHD, NHD

For the performance of test series for CHD/SHD/NHD data of specimens according to standard. The test can be started directly from the surface view or from the overview. Additional core points of hardness can be defined separately for NHD measurements. The distances of test points are automatically set to a minimum distance, following the standard, to assure correct testing is conducted. Time saving test mode "complete all indentations – then evaluate" and "auto-stop" to complete test series as soon as the lower hardness limit has been reached.



3 WELD INSPECTION (ISO 9015)

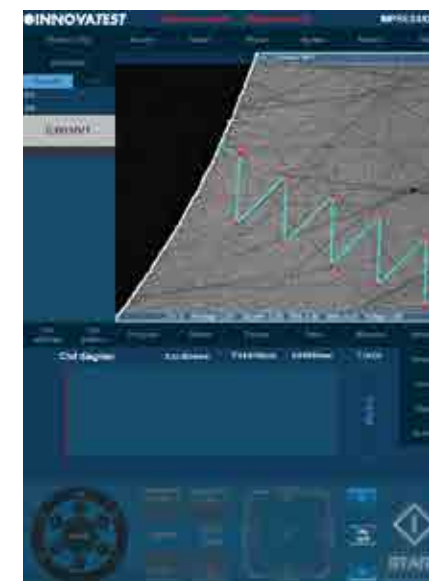
This especially developed tool enables you to conduct hardness testing on welded parts or segments according to ISO standard. Setting up the pattern according to the requirements becomes "easy-to-do", due to pre-set test points in the different zones of the weld and automatic correlation between test points. The system will run a fully automatic test procedure and display and record the results accordingly.

Easy to operate, time reducing solutions...



4 HARDNESS OF SCREW THREAD DECARBONIZED ZONE (ISO-898-1)

A specialized software tool of IMPRESSIONS™ allows you to set up and conduct fully automatic testing as per ISO 898-1 for screw thread measurement of (de)-carbonized part.



5 AUTOMATIC EDGE DETECTION

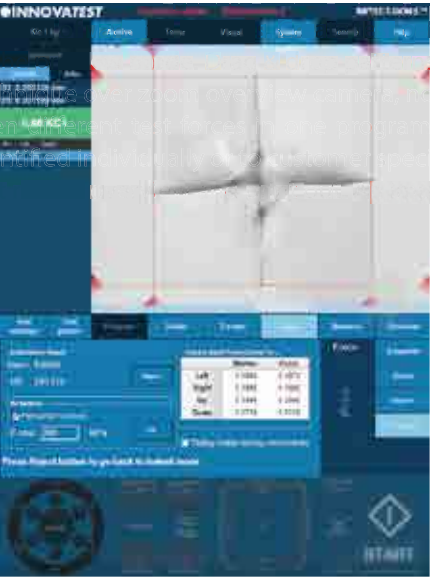
Technology that automatically or at a mouse click recognizes the edge of your sample. This helps to determine and fix the desired starting position for CHD or other pattern testing jobs.



6 AUTOMATIC CONTOUR SCANNING

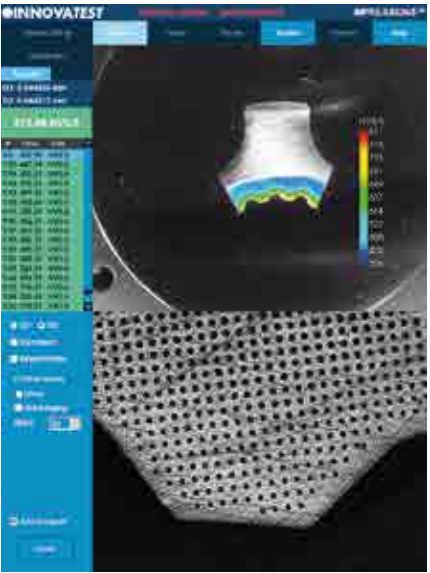
This application scans the entire outline (or partial) area of a sample. The function can be used with an objective or, ultra fast, by using the overview zoom camera. The system scans the entire outline defined and stores all relevant data in the test program. Subsequently, a chosen number of test points can be programmed into the particular program, or be conducted at selected distances, relative to the edge. This advanced feature enables the hardness testing procedure to be performed completely automatic. An excellent feature to combine with 2D or 3D hardness mapping, also known as "plane hardness chart".

Yes, we can...



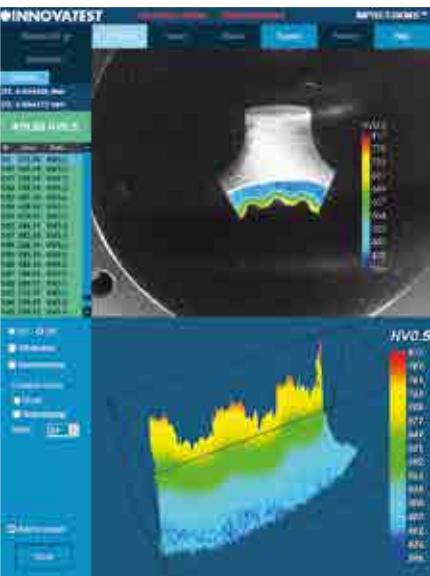
7 Kic CRACK MEASUREMENT

For those requiring more in depth knowledge on materials behavior, and wish to study on fracture and fatigue, crack growth can be predicted (and measured) by using the Kic application. The software supports Kic crack detection under load. At choice, one of both methods, Palmqvist or Median / Radial fracture toughness can be selected.



8 2D HARDNESS CHART

The optional application "Plane hardness chart", also referred to as Color Mapping is the perfect tool for securing the detail of the hardness distribution over the total cross section, especially of heat treated samples. An important feature in material exploration, weld testing or in damage analysis.



9 3D HARDNESS CHART

Besides the option to display a 2D graphic diagram, the system can generate a 3D visual. 2D and 3D hardness chart are one application.

10 SNAPSHOT FUNCTION

This handy function in IMPRESSIONS™ allows you to make screen captures of the viewing area. It gives the opportunity to store such images with comments or to paste them into the report generator for further processing.



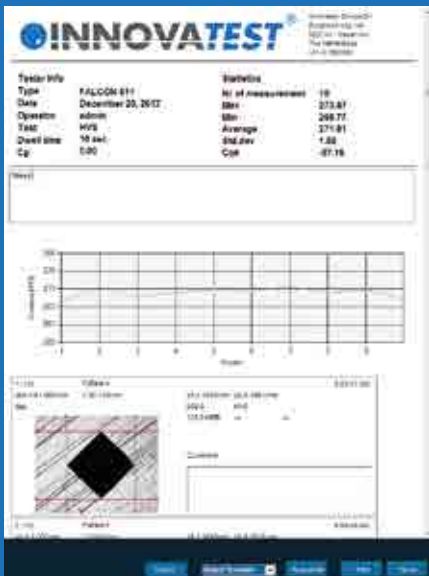
11 USER DEFINED PROGRAMS

For repeating jobs, IMPRESSIONS™ utilizes the option of setting up and storing custom test programs. For each task, a "job" can be created. All application specific parameters, like hardness scale, force, dwell-time, pattern, conversion and the report template are stored in the same program.

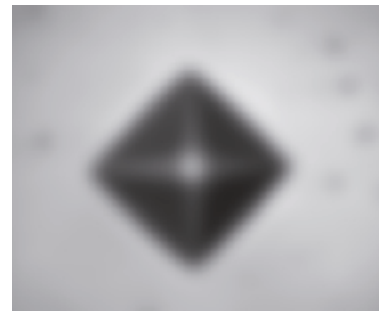


12 REPORT GENERATOR

The report generator offers to design customized testing reports, including your company's details and logo and include testing results, graphics and pictures of indentations in an easy to edit environment. The file can be printed straight to a connected laser printer for further distribution. Alternatively the file can be exported as a CSV file, to be used in MS Office applications or 3rd party quality assurance software.



AUTOMATIC IMAGE EVALUATION



1

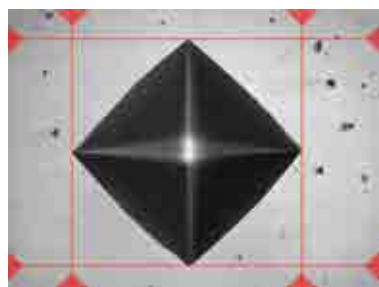
1 AUTO FOCUS

Fast & precise, observe how IMPRESSIONS™ finds focus from a large distance, as far as the travel of the Z-axis allows. Algorithms used for close distance autofocusing set new standards in AF speed.



2 AUTOMATIC MEASUREMENT

Manual positioning of filar lines is no longer required. IMPRESSIONS™ refined measurement algorithms detect indents even on very poor or scratched surfaces and measure the relevant indent dimensions according to standards. Stay in control by switching to manual measure mode and have the option of adjusting measurements by touching the screen or using the mouse. Filar lines can be colored to give the best contrast against the specimen's surface. To assure that measurements meet relevant standards on symmetry, enable the automatic indent check. All hardness values can be converted to other scales according to ISO 18265, ISO 50150, ASTM E140.



2

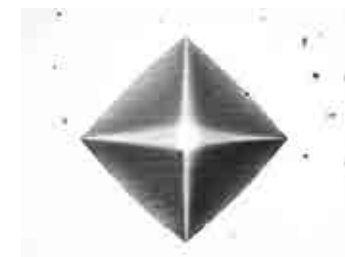
Evaluate whatever you want, --
because what gets measured, gets produced...



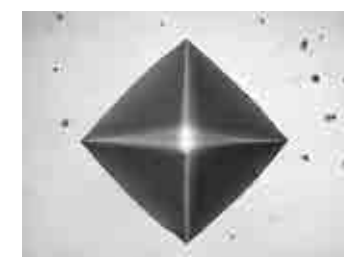
3 ILLUMINATION SETTINGS

IMPRESSIONS™ software automatic illumination system adapts to the correct illumination regardless of the sample surface quality, wherever on the sample, independent from material (steel, carbide, coated or ceramic). Contrast, Brightness and program, can be set automatically for each measurement or controlled manually. Sharpness can be stored with the pre-determined test

Too bright



OK



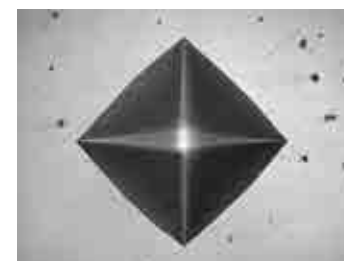
Too dark



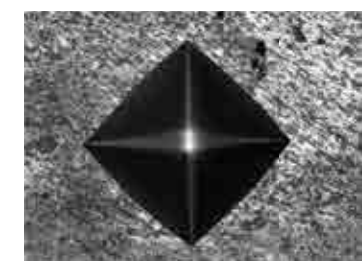
3



Irregular surface



Regular surface



Poor surface

4

4 REFINED IMAGE DETECTION

Complex, refined algorithms ensure reproducible measurements on different materials and even on scratched and damaged surfaces.



SUPPORT YOUR BEST TESTING RESULTS

With our rigid designed Bench stands

- Rock solid bench stands
- 100% retractable drawer, bearing guidance, max 100kg load. Rubber anti slip bottom
- Lockable cabinet, 300mm high
- Adjustable feet, (+/- 50mm height adjustable to reach ergonomic working position)
- Made of corrosion resistant zinc plated steel with RAL powder coating
- Carrying capacity of 400kg
- Top surface made of 50mm Plywood with 1.5mm chemical resistant plastic plating, edges made of shock resistant 3mm ABS side liner
- Industrial quality, for workshop or laboratory

Designed for hardness testing instruments, painted in INNOVATEST® RAL colors matching our testers.



UN-STAND/960 71 x 75 x 80 cm

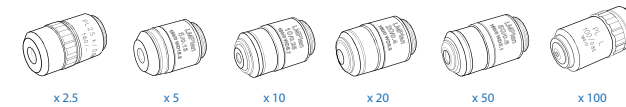


UN-STAND/965 150 x 75 x 80 cm

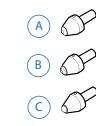
ACCESSORIES FALCON 500

Schematic overview of the configuration options, standard and optional accessories

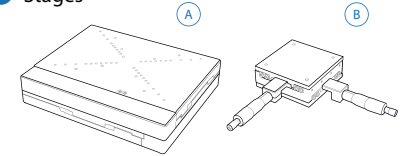
1 Objectives



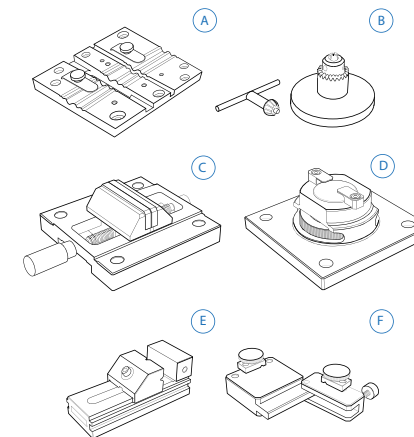
2 Indenters



3 Stages



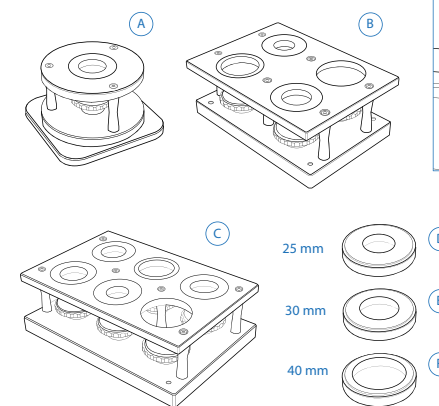
5 Fixtures & vices



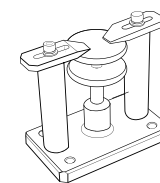
4 Anvils



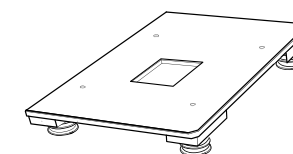
6 Embedded sample holders



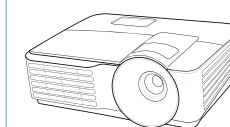
7 Universal sample holder



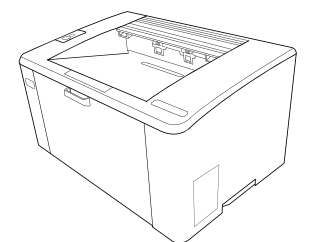
8 Vibration isolation stage



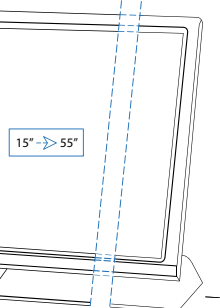
9 Projector



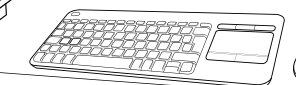
10 Printer



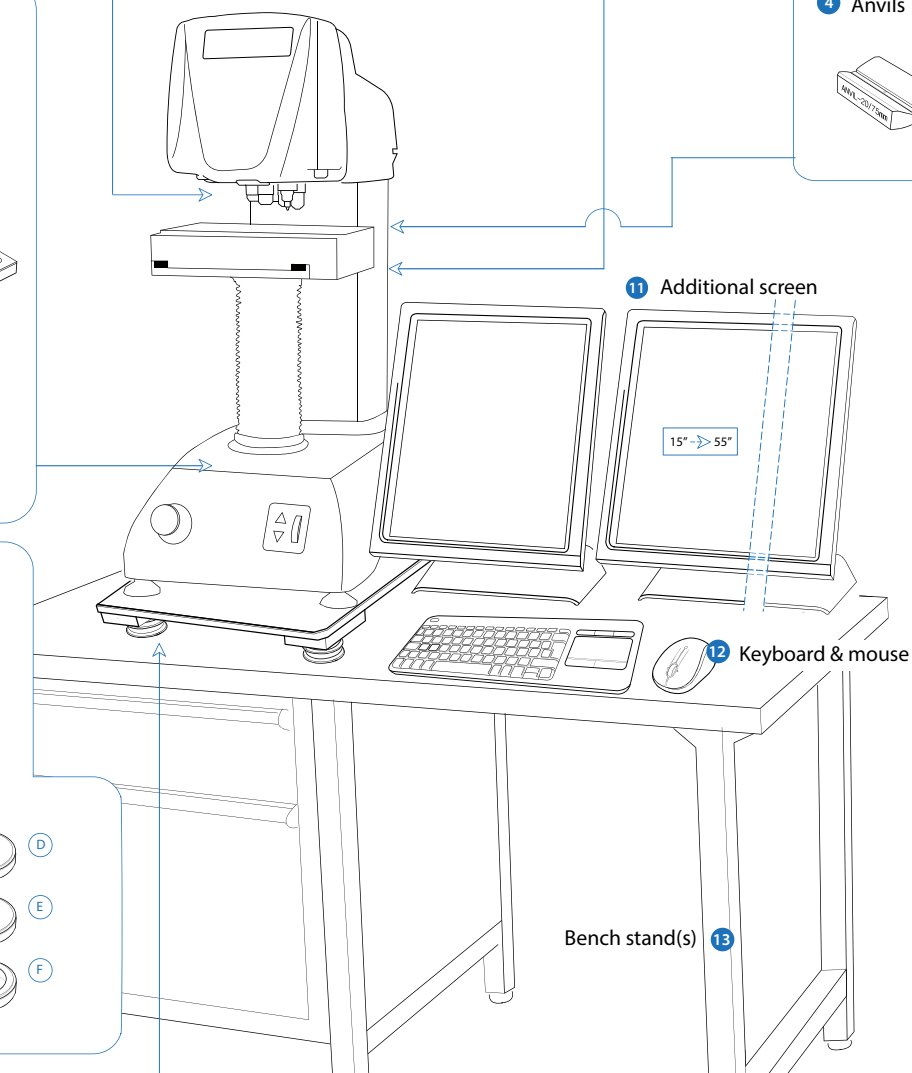
11 Additional screen



12 Keyboard & mouse



13 Bench stand(s)



Not all accessories are displayed on this page. Full details can be found on the Order details page.

ORDER DETAILS

FALCON 500

	FALCON 501 Micro hardness tester, 3gf - 2kgf	FALCON 501	
	FALCON 503 Micro hardness tester, 10gf - 10kgf	FALCON 503	
	FALCON 505 Micro hardness tester, 200gf - 31.25kgf	FALCON 505	
	FALCON 507 Micro hardness tester, 10gf - 31.25kgf	FALCON 507	
	FALCON 508 Micro hardness tester, 1gf - 31.25kgf	FALCON 508	
	FALCON 509 Micro hardness tester, 200gf - 62.5kgf	FALCON 509	
	FALCON 510 Micro hardness tester, 10gf - 62.5kgf	FALCON 510	
	FALCON 511 Micro hardness tester, 1gf - 62.5kgf	FALCON 511	

ACCESSORIES

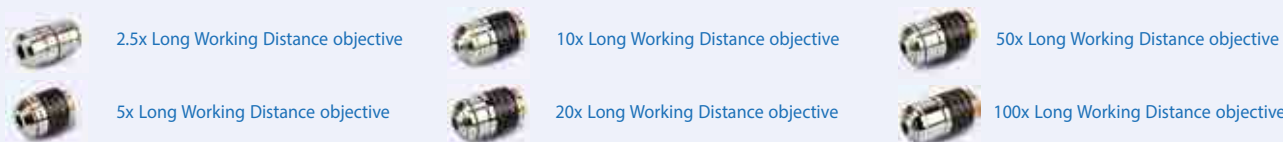
1	Objectives		2.5 x Objective FOV 2000 µm	ASSUN-OBJ2.5X	
			5 x Objective FOV 1000 µm	BM-05-0001	
			10 x Objective FOV 500 µm	BM-05-0002	STANDARD
			20 x Objective FOV 250 µm. Standard : 505, 509.	BM-05-0003	STANDARD
			50 x Objective FOV 125 µm. Standard : 501, 503, 507, 508, 510, 511	BM-05-0004	STANDARD
			100 x Objective FOV 75 µm	BM-05-0005	
			Stage overview camera, high resolution, HD, full color	UN-OVCAM2C	
			Second indenter position. Factory installed	FALCON/IP2	
2	Indenters	A	Vickers Indenter ISO/ASTM certified	IN/8105	
		B	Knoop Indenter ISO/ASTM certified	IN/8205	
		C	Brinell Indenter 1 mm ISO/ASTM certified	IN/7001	
			Brinell Indenter 2.5 mm ISO/ASTM certified	IN/7006	
			Brinell Indenter 5 mm ISO/ASTM certified	IN/7011	
3	Stages	A	Motorized CNC X-Y stage, 250x205mm Displacement: 120x100mm, Motorized CNC X-Y stage, 300x225mm, Displacement: 170x120mm, Motorized CNC X-Y stage, 350x225mm, Displacement: 220x120mm. Repeatability +/-0.003mm requires: cable set, UN-XY2CABLENBS, no extra fixture required	UN-XY571210 UN-XY571712 UN-XY572212	
			Cable set for connecting CNC stage	UN-XY2CABLENBS	
		B	Manual X-Y stage with analogue metric micrometers, 100x100mm, Displacement: 25x25mm, scale 0.01mm, max load 100kg, Requires: AS500XL-450-02 Mounting plate	UN-XYSTAGE/120	
			Digital micrometer head, Displacement: 25mm, res. 0.001mm	IMP-DIGMIC	
	4	Anvils	Small V-anvil 3-20 mm, requires base plate	UN-ANVILSV/105	
			Large V-anvil 20-75 mm, requires base plate	UN-ANVILLV/106	
			Base plate for V-anvils UN-ANVILLV-105/106	UN-VANVILBASEPL	

5	Fixtures and vices	A	V Groove clamp for small round parts dia. 0.8-5 mm	UN-VGROOVECLAMP	
		B	Axle chuck	UN-AXLECHUCK	
		C	Small parts vice jaw; width 55mm; open 50 mm; self-centering	UN-VICE/115	
		D	Thin metal clamp	UN-CLAMP/115	
		E	Polished precision vice lock down system ; jaw 25 mm, depth 20 mm	UN-VICE/210	
			Polished precision vice lock down system ; jaw 36 mm, depth 42 mm	UN-VICE/215	
			Polished precision vice lock down system ; jaw 48 mm, depth 75 mm	UN-VICE/220	
			Polished precision vice lock down system ; jaw 75 mm, depth 100 mm	UN-VICE/230	
		F	Wire testing fixture	UN-WIRE/105	
6	Embedded sample holders	A	Sample holder for 1 sample, 50mm/2"	UN-ESH1	
		B	Sample holder for 4 samples, 50mm/2"	UN-ESH4	
		C	Sample holder for 6 samples, 50mm/2"	UN-ESH6	
		D	Insert 25mm, for sample holders	UN-ESHI25	
		E	Insert 30mm, for sample holders	UN-ESHI30	
		F	Insert 40mm, for sample holders	UN-ESHI40	
7	Sample holder		Universal clamp and levelling device	UN-CLAMP/105	
8	Vibration isolation stage		Passive vibration isolation stage, clamping of vibration for low force testing.	UN-AVS-150	
9	Projector		On request, any brand of your choice	UN-PROJECTOR	
10	Printer		Laser printer	UN-PRINT	
11	LCD screen		Portrait mode 15 " capacitive touch screen	UN-SCREEN1	STANDARD
12	Keyboard and mouse		Logitech keyboard and mouse	UN-SKBSET	STANDARD
13	Bench stands		Cabinet test table with drawer 71x75x80cm	UN-STAND/960	
			Cabinet test table with drawer 150x75x80cm	UN-STAND/965	
			Pre installation, calibration, handling and standard packing (for sea and airworthy transportation)	SEAPACK/032	



ACCESSORIES

OBJECTIVES



INDENTERS



STAGES



CLAMP



VIBRATION ISOLATION STAGE



FIXTURES & VICES



SAMPLE HOLDERS



V-ANVILS



ORDER DETAILS

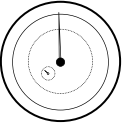
SOFTWARE

Manual on-screen measurement	UN-MANM	STANDARD
Automatic measurement	UN-AUTOM	STANDARD
Automatic focussing	UN-AUTOFOC	STANDARD
Report configurator	UN-REPORTA	STANDARD
User level management	UN-LEVMAN	STANDARD
Overview / Full view zoom camera + software functionality, field of view 45x35mm up to 155x125mm	UN-OVCAM2C	
CHD, SHD, NHD configurator & graphic interface. Requires: indent pattern configurator (TESTPAT01)	UN-PATCHD	
CHD, SHD, NHD configurator & graphic interface for analogue and digital micro meter stage only (not including full pattern editor) (supports manual & digital micrometer stages ONLY).	UN-MCHD	
Video overlay graphic pattern editor	UN-TESTPAT01	
Advanced 3 axis coordinate & free style indent pattern configurator, includes CHD, SHD, NHD and EDGE DETECTION (supports manual & digital micrometer stages ONLY).	UN-TESTPAT02	
Weld inspection (ISO 9015) Requires: indent pattern configurator (TESTPAT01)	UN-WELDPAT	
Ammunition testing pattern configurator & reporting	UN-SHELLCONF	
Hardness of screw thread decarbonized zone ISO 898-1	UN-ISO898/1	
Automatic edge detection	UN-EDGEDTC	
Automatic contour scanning	UN-CSCAN	
Drawing & measuring application	UN-DRMEAS	
Snapshot function	UN-SNAPSH	STANDARD
Full stage view scanning	UN-STAGESC	
Klc crack measurement under load. Palmqvist & Median / Radial fracture toughness	UN-CRKPAP	
2D / 3D hardness chart (scanning/mapping, includes automatic contour scanning)	UN-CSCAN2D3D	
DualView Technology, 2 viewing screens software ; screen, cables, European and US power cables included*	UN-DVTECHSET	
Virtual joystick, on-screen		STANDARD
Advanced 3-axis communication protocol for robotic systems	UN-REMC	
Q-DAS Certified connectivity protocol	UN-QDAS	

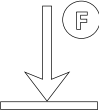


SPECIFICATIONS

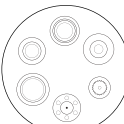
HARDNESS SCALES

	VICKERS ISO 6507 ASTM E384, E92 JIS B 7725	HV0.001 HV0.002 HV0.003 HV0.004 HV0.005 HV0.006 HV0.007 HV0.008 HV0.009 HV0.010 HV0.015 HV0.020 HV0.025 HV0.050 HV0.1 HV0.2 HV0.3 HV0.5 HV1 HV2 HV2.5 HV3 HV4 HV5 HV10 HV20 HV25 HV30 HV40 HV50
	Kic Fracture toughness	All Vickers forces & scales
	KNOOP ISO 4545 ASTM E92 JIS Z 2251	HK0.001 HK0.003 HK0.005 HK0.015 HK0.01 HK0.02 HK0.025 HK0.05 HK0.1 HK0.2 HK0.3 HK0.5 HK1 HK2 HK5
	BRINELL ISO 6506, ASTM E10 JIS Z 2243	HBW1/1 HBW1/1.25 HBW1/2.5 HBW1/5 HB1/10 HBW1/30 HBW2.5/6.25 HBW2.5/7.8125 HBW2.5/15.625 HBW2.5/31.25 HBW2.5/62.5 HBW5/25 HBW5/62.5
	CONVERSIONS	Conversion to other hardness scales according to ASTM E140, ISO 18265, GB/T 1172


TEST FORCE

	Force application	Multi-load cell, closed loop, force feedback system
	Test forces	0.001kgf – 62.5kgf
	Force range per model	FALCON 501 3gf– 2kgf
		FALCON 503 10gf - 10kgf
		FALCON 505 200gf - 31.25kgf
		FALCON 507 10gf - 31.25kgf
		FALCON 508 1gf - 31.25kgf
		FALCON 509 200gf - 62.5kgf
		FALCON 510 10gf - 62.5kgf
		FALCON 511 1gf - 62.5kgf
	Test force tolerance	< 0.25% for test force 100gf to 62.5kgf
		< 0.5% for test force below 100gf
	Dwell time settings	Default 10 seconds, user defined. Up to 250 seconds

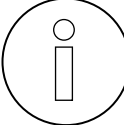
TURRET

	Motorized turret	Ultra-fast, 6 position turret, 2 indenter positions, 4 objective positions
	Objectives	Long working distance 2.5x, 5x, 10x, 20x, 50x, 100x
	Indenters	Certified indenters (ISO/ASTM) available at choice
	Camera 1 (objective)	5 Megapixels, HD, Machine vision system
	Camera 2 (overview)	Full HD, Optical zoom system, variable FOV 45 x 35mm - 155 x 125mm

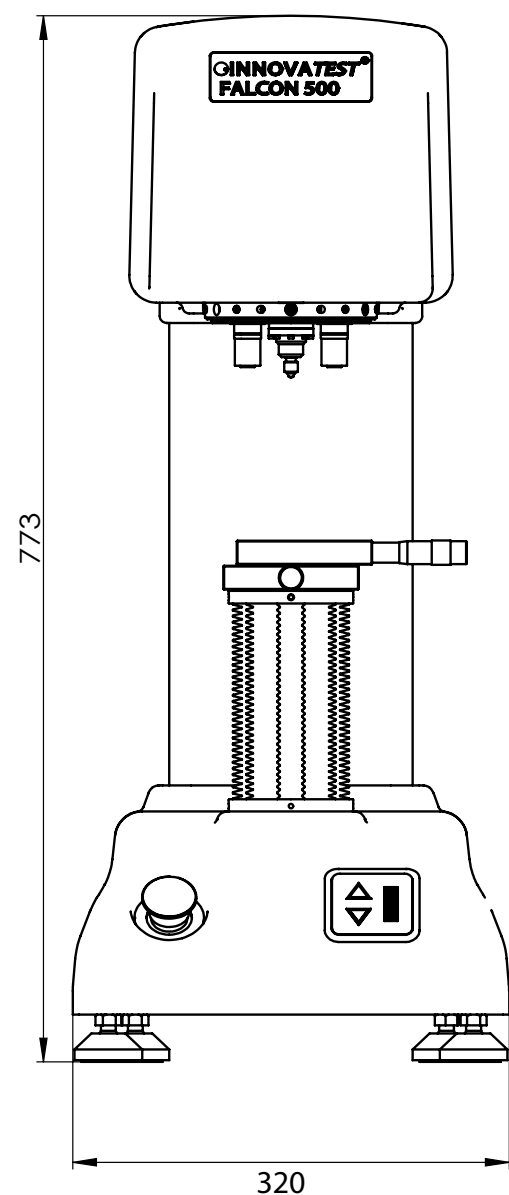
SYSTEM

	Electronic system	High performance embedded controller, i7, mSSD 120 GBxx, MS Windows® 10 operated
	CNC support	5 Axis CNC controller (for motorized stages) or stage accessories
	Screen(s)	15" portrait mode capacitive touch screen, second screen option
	Display resolution	0.01 HV, HK, HB
	Statistics	Total test, max, min, average, range, standard deviation, All in real time after each test
	Hardness conversion	Rockwell, Rockwell Superficial, Vickers, Brinell, Knoop, Leeb & Tensile
	Software	IMPRESSIONS™ V2, work flow system & tester control
	Data storage capacity	Internal and external mSSD, SSD or HDD
	Data output	XML, CSV, Certified for Q-DAS (Optional)
	Connectivity	5 USB ports, RJ45 Ethernet LAN, W-LAN, RS-232, Blue Tooth, 5 Axis CNC & motorized X-Y stage connector, Dual HDMI screen connectors
	Printer	A4, A3 full color laser printer (optional)

GENERAL

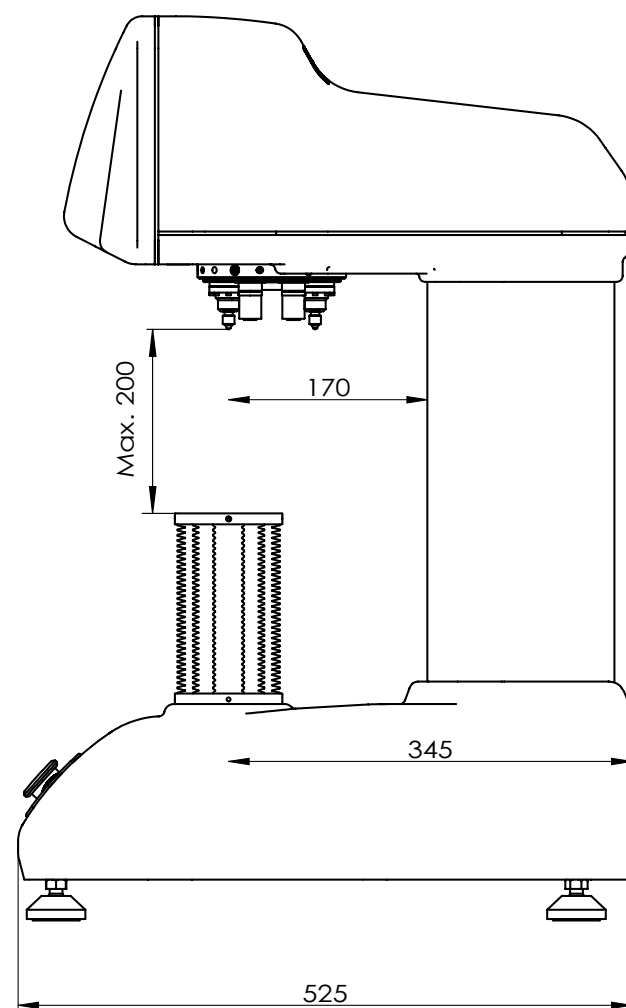
	Machine dimension	773 mm x 350 mm x 506 mm
	Machine weight	78 kg
	Power supply	100VAC to 240VAC, 50/60Hz, single phase
	Operating temperature	10°C to 35°C, non-condensing
	Power consumption	100W
	Humidity	10% to 90%, non-condensing

TECHNICAL DRAWINGS



All dimensions in these drawings are in mm, approximate. Working heights and or workpiece accommodation varies depending on the stages and stage accessories used.

Please contact our sales department for more details.



OTHER MODELS IN THE FALCON RANGE



FALCON 400

Load Cell, closed loop
Micro/Macro Vickers, Knoop
& Brinell Hardness testers
With fine adjustable Z-axis
side handwheel
See brochure B18F400/XX



FALCON 450

Load Cell, closed loop
Macro/Micro Vickers, Knoop
& Brinell Hardness tester
With Z-axis handwheel
See brochure B18F450/XX



FALCON 600

Multi Load Cell, Closed loop
Fully automatic, free to
configure Micro/Macro Vickers,
Knoop & Brinell Hardness
testers. With ball bearing
motorized Z-axis
See brochure B18F600/XX



FALCON 5000

Multi Load Cell, Closed loop
Fully automatic, 8 position
turret, laser positioning.
Micro/Macro Vickers, Knoop
& Brinell Hardness testers.
Descending test head, fixed
work piece position
See brochure B18F5000/XX



FALCON 5003XL

Multi Load Cell, Closed loop
Fully automatic, 8 position
turret, laser positioning.
Micro/Macro Vickers, Knoop
& Brinell Hardness testers
Descending test head,
fixed work piece position
See brochure B18F5000/XX

Changes in products and/
or product specifications
can emerge due to new
technologies and continuous
development.

We reserve the right to change
or modify specifications of
the products without prior
notice. We recommend you
to contact our sales office for
up-to-date information.

Brochure B18F500/09/EN

© All rights reserved, 2018

www.innovatest-europe.com

Distributor :

CORPORATE HEAD OFFICE

INNOVATEST Europe BV

Manufacturing, Distribution & Service

Borgharenweg 140
6222 AA MAASTRICHT
The Netherlands

Phone: +31 43 3520060

Fax: +31 43 3631168

info@innovatest-europe.com

www.innovatest-europe.com

INNOVATEST Deutschland GmbH Sales & Service

Phone: +49 245 670 59 500
info@innovatest-deutschland.com
www.innovatest-deutschland.com

INNOVATEST Polska sp. z o.o Sales & Service

Phone: +48 697 099 826
info@innovatest-polska.pl
www.innovatest-polska.pl

INNOVATEST Shanghai Co., Ltd. Sales & Service

Phone: +86 21 60906200
info@innovatest-shanghai.com
www.innovatest-shanghai.com

INNOVATEST Japan Co., Ltd. Sales & Service

Phone: +81 3 3527 3092
info@innovatest-japan.com
www.innovatest-japan.com

INNOVATEST USA Company Sales & Service

Phone: +1 267 317 4300
info@innovatest-usa.com
www.innovatest-usa.com

INNOVATEST South East Asia Sales & Service

Phone: +65 6451 1123
info@innovatest-singapore.com
www.innovatest-singapore.com